

27.04.2008 14:00 - 28.04.2008 15:00

PROLAN

RMON						
	■	■	■	■	■	
[10.0.3.11] RMON Maximum Port Utilization (%)	<=25 100%	>25 0%	>30 0%	>35 0%	>40 0%	1478
[10.0.3.11] RMON Maximum Port Broadcast Packets (%)	<=5 100%	>5 0%	>6 0%	>7 0%	>8 0%	1480
[10.0.3.11] RMON Maximum Port Multicast Packets (%)	<=5 100%	>5 0%	>6 0%	>7 0%	>8 0%	1480
[10.0.3.11] RMON Maximum Port CRC-Align Errors (%)	<=0,01 100%	>0,01 0%	>0,01 0%	>0,03 0%	>0,05 0%	1478
[10.0.3.11] RMON Maximum Port Undersize Packets (%)	<=0,01 100%	>0,01 0%	>0,01 0%	>0,03 0%	>0,05 0%	1478
[10.0.3.11] RMON Maximum Port Oversize Packets (%)	<=0,01 100%	>0,01 0%	>0,01 0%	>0,03 0%	>0,05 0%	1478
[10.0.3.11] RMON Maximum Port Fragments (%)	<=0,01 100%	>0,01 0%	>0,01 0%	>0,03 0%	>0,05 0%	1478
[10.0.3.11] RMON Maximum Port Jabbers (%)	<=0,01 100%	>0,01 0%	>0,01 0%	>0,03 0%	>0,05 0%	1478
[10.0.3.11] RMON Maximum Port Collisions (%)	<=1 100%	>1 0%	>4 0%	>7 0%	>10 0%	1478
[10.0.3.11] RMON Device SNMP Availability (%)	>=99 99,5%	<99 0%	<96 0%	<94 0%	<90 0,47%	1480
	()	99,5% →	99,5% →	99,5% →	99,5%	1480

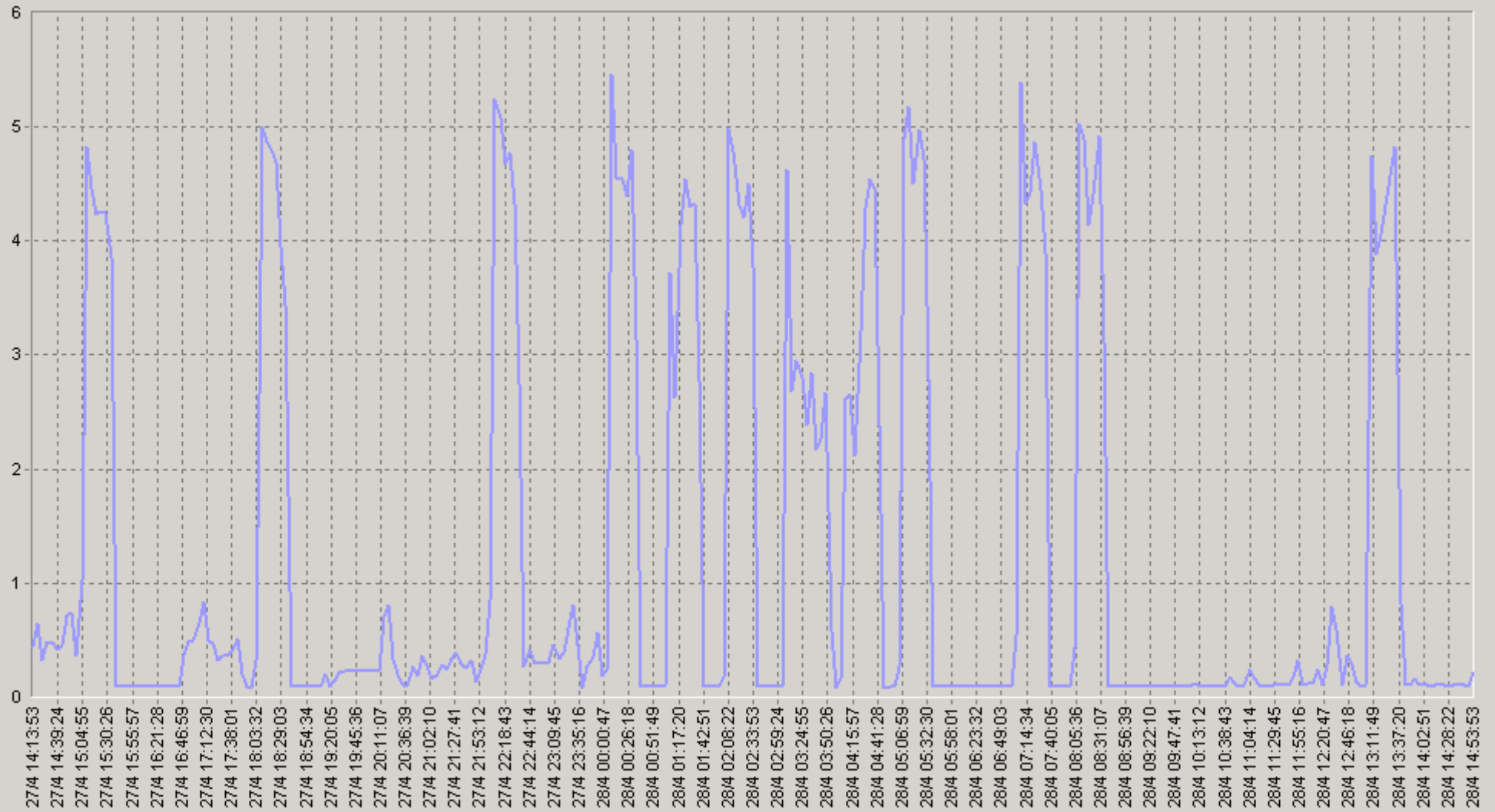
(2)

« »



27.04.2008 14:00 - 28.04.2008 15:00

[10.0.3.11] RMON Maximum Port Utilization (%)



— [10.0.3.11] RMON Maximum Port Utilization (%) (SLA-ON-SERVER3)

27.04.2008 14:00 - 28.04.2008 15:00

20. [10.0.3.11] RMON Maximum Port Utilization (%)

		75<	90<			75<	90<
00:00-00:20	3,16	5,56	5,66	06:00-06:20	0,09	0,1	0,1
00:20-00:40	3,66	5,58	5,68	06:20-06:40	0,1	0,1	0,1
00:40-01:00	0,09	0,1	0,1	06:40-07:00	0,09	0,1	0,1
01:00-01:20	2,22	3,81	4,31	07:00-07:20	3,17	5,33	5,46
01:20-01:40	4,42	5,55	5,59	07:20-07:40	3,82	5,59	5,63
01:40-02:00	0,09	0,1	0,1	07:40-08:00	0,1	0,1	0,1
02:00-02:20	3,03	5,51	5,55	08:00-08:20	3,11	5,54	5,6
02:20-02:40	3,68	5,38	5,45	08:20-08:40	3,64	5,61	5,64
02:40-03:00	0,09	0,1	0,1	08:40-09:00	0,1	0,1	0,1
03:00-03:20	2,45	4,01	4,74	09:00-09:20	0,1	0,1	0,11
03:20-03:40	2,54	2,88	3,2	09:20-09:40	0,09	0,1	0,1
03:40-04:00	1,55	2,37	2,68	09:40-10:00	0,1	0,1	0,11
04:00-04:20	1,64	2,67	2,89	10:00-10:20	0,1	0,1	0,12
04:20-04:40	3,83	5,21	5,73	10:20-10:40	0,1	0,11	0,11
04:40-05:00	1,2	0,1	5,64	10:40-11:00	0,13	0,14	0,15
05:00-05:20	3,18	5,61	5,72	11:00-11:20	0,15	0,18	0,23
05:20-05:40	3,67	5,67	5,73	11:20-11:40	0,1	0,11	0,13
05:40-06:00	0,09	0,1	0,1	11:40-12:00	0,18	0,21	0,32

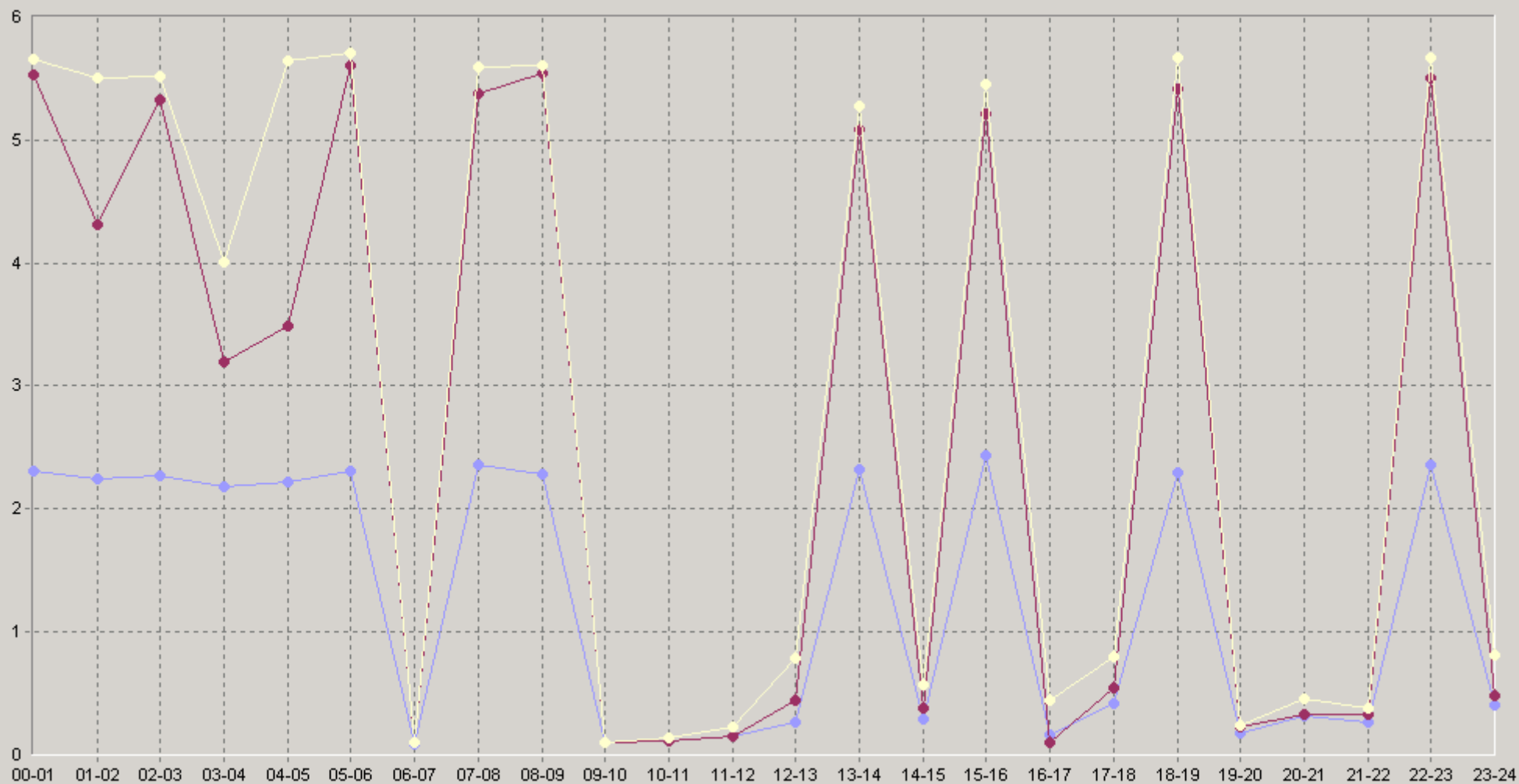
27.04.2008 14:00 - 28.04.2008 15:00

20. [10.0.3.11] RMON Maximum Port Utilization (%)

		75<	90<			75<	90<
12:00-12:20	0,15	0,14	0,17	18:00-18:20	3,14	5,53	5,62
12:20-12:40	0,44	0,79	0,79	18:20-18:40	3,65	5,68	5,71
12:40-13:00	0,22	0,41	0,48	18:40-19:00	0,09	0,1	0,1
13:00-13:20	2,75	5,05	5,13	19:00-19:20	0,12	0,11	0,12
13:20-13:40	4,08	5,28	5,35	19:20-19:40	0,19	0,24	0,24
13:40-14:00	0,12	0,13	0,14	19:40-20:00	0,23	0,23	0,23
14:00-14:20	0,19	0,16	0,37	20:00-20:20	0,48	0,42	1,4
14:20-14:40	0,3	0,36	0,51	20:20-20:40	0,21	0,27	0,34
14:40-15:00	0,36	0,52	0,67	20:40-21:00	0,26	0,32	0,37
15:00-15:20	3,82	5,21	5,28	21:00-21:20	0,21	0,25	0,27
15:20-15:40	3,73	5,47	5,51	21:20-21:40	0,33	0,38	0,39
15:40-16:00	0,09	0,1	0,1	21:40-22:00	0,26	0,32	0,42
16:00-16:20	0,09	0,1	0,1	22:00-22:20	3,27	5,55	5,62
16:20-16:40	0,09	0,1	0,1	22:20-22:40	3,59	5,66	5,72
16:40-17:00	0,31	0,5	0,54	22:40-23:00	0,32	0,36	0,42
17:00-17:20	0,61	0,79	0,97	23:00-23:20	0,34	0,35	0,41
17:20-17:40	0,39	0,4	0,58	23:20-23:40	0,54	0,68	1,08
17:40-18:00	0,25	0,38	0,51	23:40-00:00	0,33	0,41	0,51

27.04.2008 14:00 - 28.04.2008 15:00

60. [10.0.3.11] RMON Maximum Port Utilization (%)



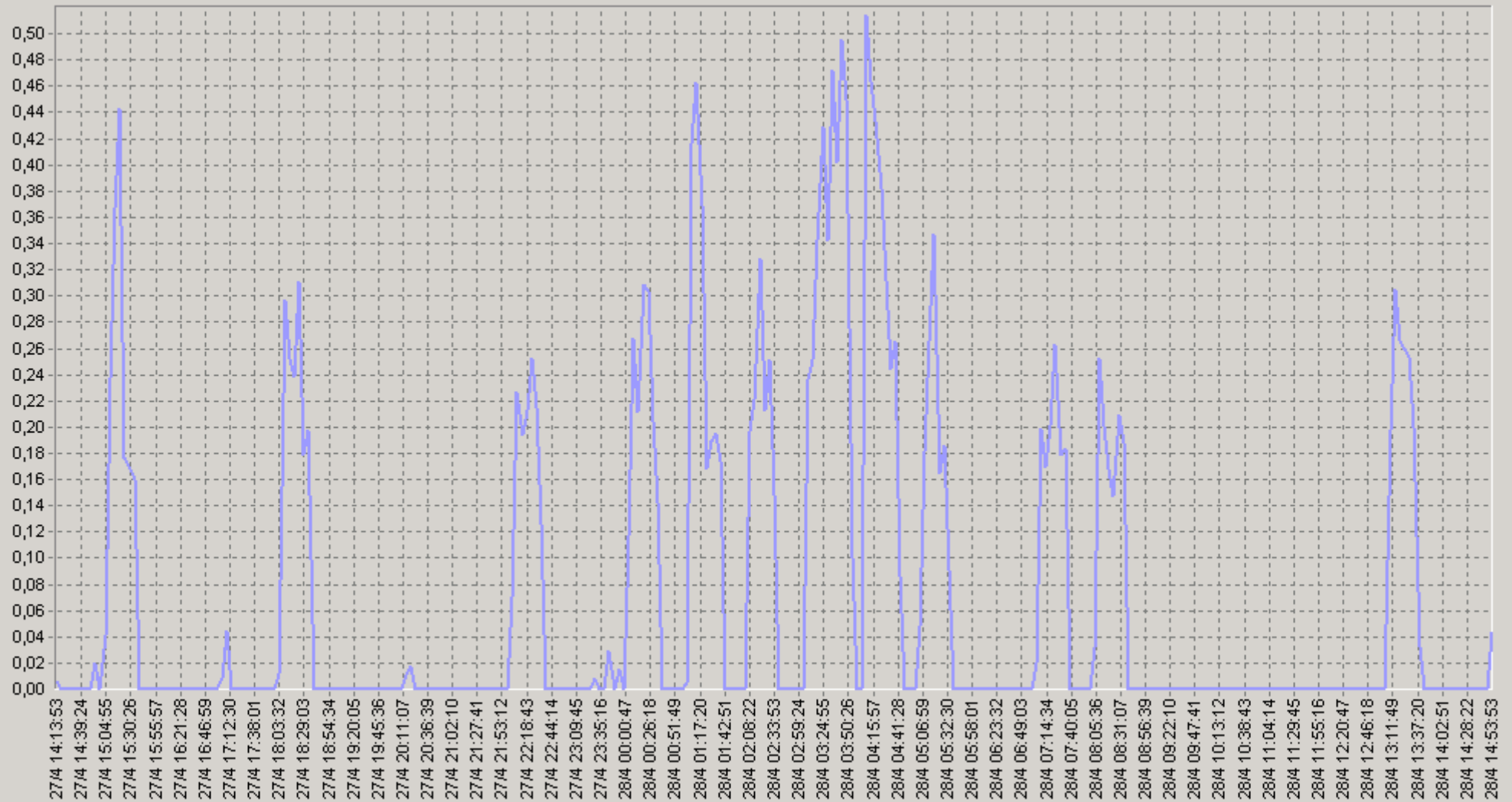
◆ [BaseLine Avg] [10.0.3.11] RMON Maximum Port Utilization (%) (60) (SLA-ON-SERVER3)

◆ [BaseLine Percnt75 (<=)] [10.0.3.11] RMON Maximum Port Utilization (%) (60) (SLA-ON-SERVER3)

◆ [BaseLine Percnt90 (<=)] [10.0.3.11] RMON Maximum Port Utilization (%) (60) (SLA-ON-SERVER3)

27.04.2008 14:00 - 28.04.2008 15:00

[10.0.3.11] RMON Maximum Port Broadcast Packets (%)



— [10.0.3.11] RMON Maximum Port Broadcast Packets (%) (SLA-ON-SERVER3)

27.04.2008 14:00 - 28.04.2008 15:00

20 [10.0.3.11] RMON Maximum Port Broadcast Packets (%)

		75<	90<			75<	90<
00:00-00:20	0,19	0,27	0,28	06:00-06:20	0	0	0
00:20-00:40	0,19	0,25	0,28	06:20-06:40	0	0	0
00:40-01:00	0	0	0	06:40-07:00	0	0	0
01:00-01:20	0,27	0,43	0,48	07:00-07:20	0,12	0,2	0,23
01:20-01:40	0,22	0,24	0,38	07:20-07:40	0,18	0,22	0,3
01:40-02:00	0	0	0	07:40-08:00	0	0	0
02:00-02:20	0,16	0,25	0,26	08:00-08:20	0,14	0,22	0,23
02:20-02:40	0,18	0,26	0,27	08:20-08:40	0,16	0,2	0,26
02:40-03:00	0	0	0	08:40-09:00	0	0	0
03:00-03:20	0,17	0,31	0,37	09:00-09:20	0	0	0
03:20-03:40	0,41	0,47	0,49	09:20-09:40	0	0	0
03:40-04:00	0,29	0,47	0,55	09:40-10:00	0	0	0
04:00-04:20	0,29	0,47	0,53	10:00-10:20	0	0	0
04:20-04:40	0,34	0,4	0,54	10:20-10:40	0	0	0
04:40-05:00	0,04	0	0,2	10:40-11:00	0	0	0
05:00-05:20	0,19	0,21	0,46	11:00-11:20	0	0	0
05:20-05:40	0,13	0,19	0,22	11:20-11:40	0	0	0
05:40-06:00	0	0	0	11:40-12:00	0	0	0

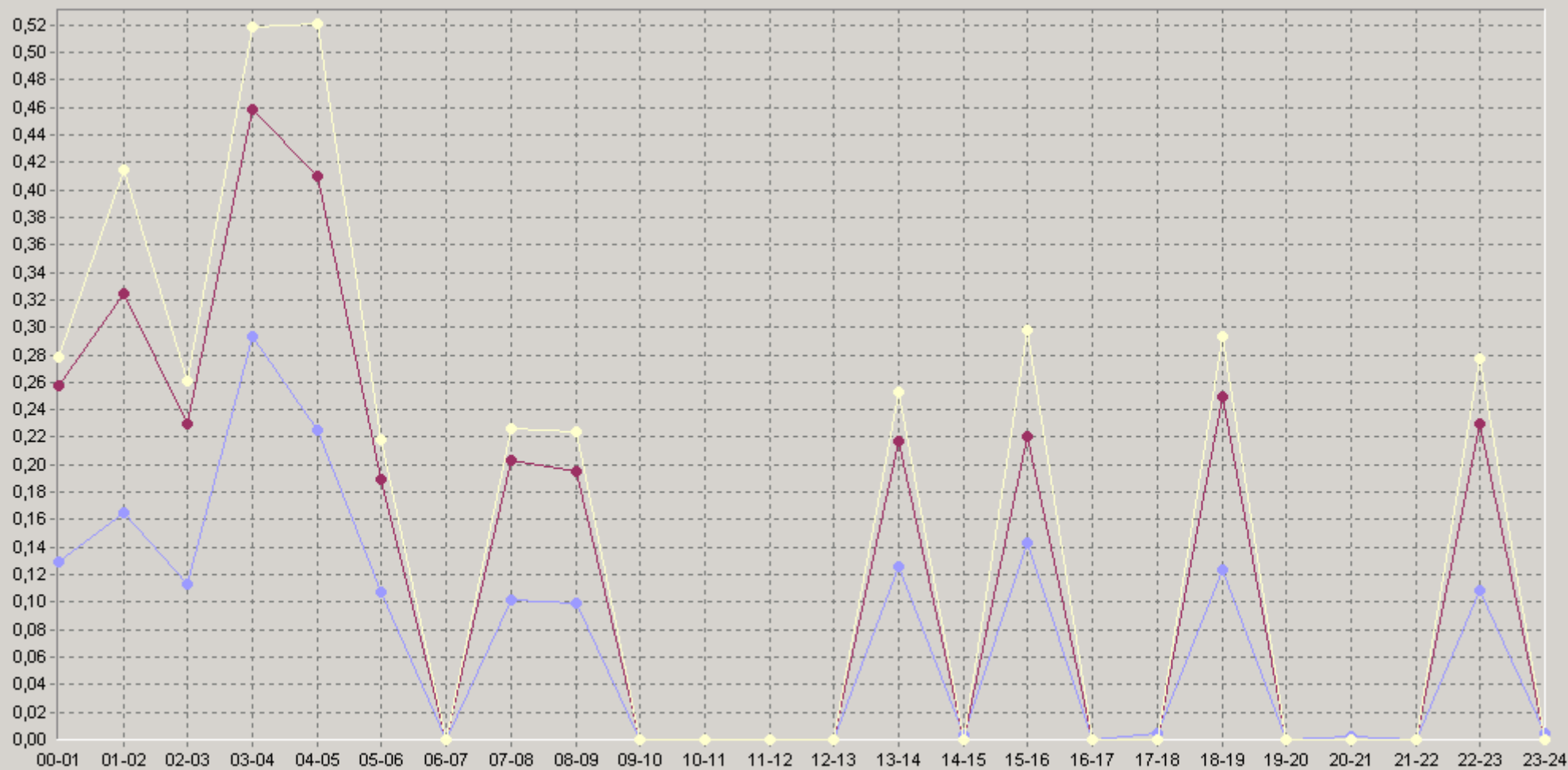
27.04.2008 14:00 - 28.04.2008 15:00

20 [10.0.3.11] RMON Maximum Port Broadcast Packets (%)

		75<	90<			75<	90<
12:00-12:20	0	0	0	18:00-18:20	0,17	0,27	0,29
12:20-12:40	0	0	0	18:20-18:40	0,2	0,26	0,3
12:40-13:00	0	0	0	18:40-19:00	0	0	0
13:00-13:20	0,17	0,22	0,22	19:00-19:20	0	0	0
13:20-13:40	0,21	0,25	0,31	19:20-19:40	0	0	0
13:40-14:00	0	0	0	19:40-20:00	0	0	0
14:00-14:20	0	0	0	20:00-20:20	0,01	0	0
14:20-14:40	0	0	0	20:20-20:40	0	0	0
14:40-15:00	0,01	0	0	20:40-21:00	0	0	0
15:00-15:20	0,31	0,35	0,54	21:00-21:20	0	0	0
15:20-15:40	0,16	0,22	0,25	21:20-21:40	0	0	0
15:40-16:00	0	0	0	21:40-22:00	0	0	0
16:00-16:20	0	0	0	22:00-22:20	0,14	0,21	0,29
16:20-16:40	0	0	0	22:20-22:40	0,18	0,26	0,28
16:40-17:00	0	0	0	22:40-23:00	0	0	0
17:00-17:20	0,01	0	0,04	23:00-23:20	0	0	0
17:20-17:40	0	0	0	23:20-23:40	0	0	0
17:40-18:00	0	0	0	23:40-00:00	0,01	0	0

27.04.2008 14:00 - 28.04.2008 15:00

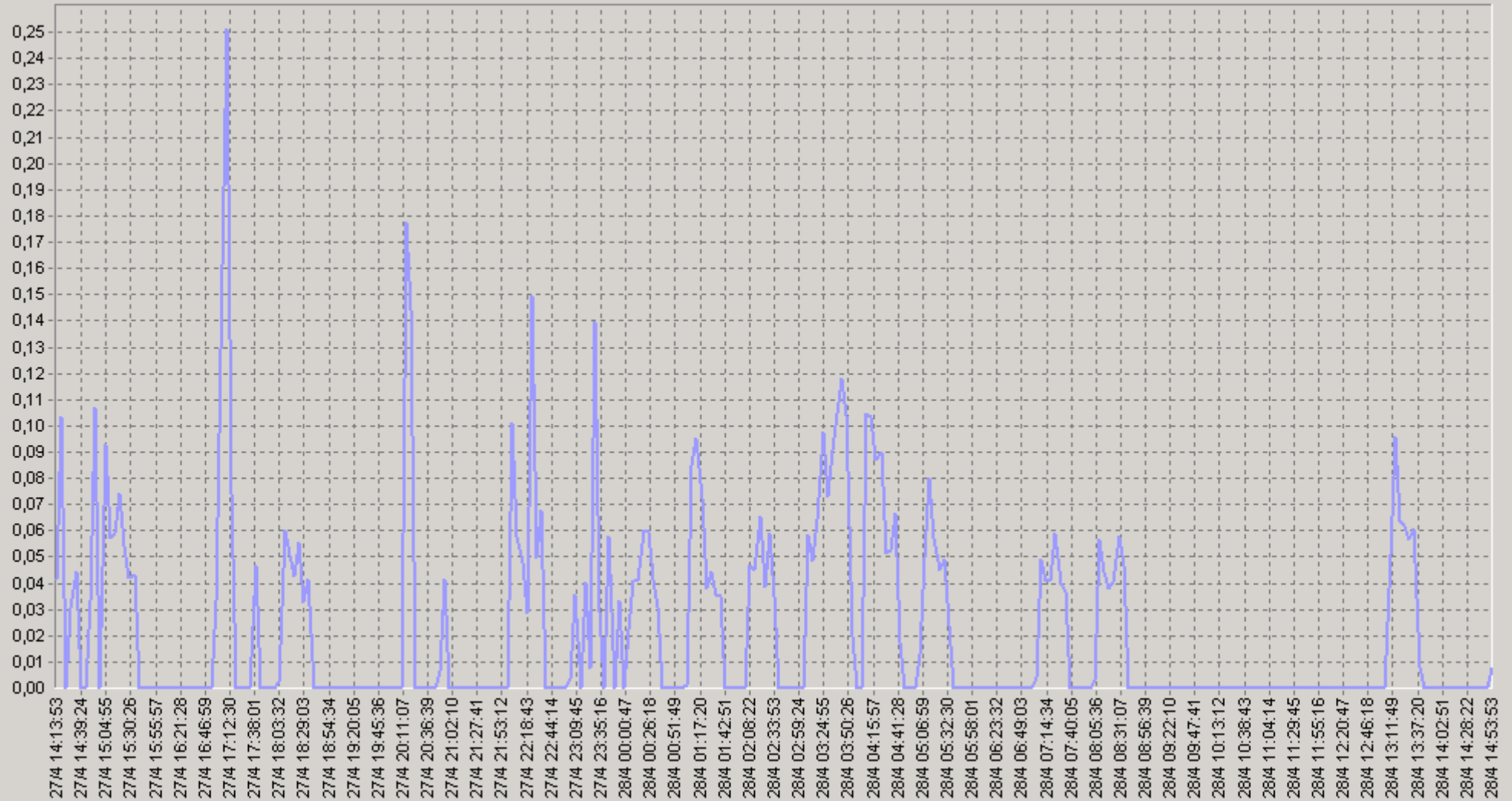
60 [10.0.3.11] RMON Maximum Port Broadcast Packets (%)



◆ [BaseLine Avg] [10.0.3.11] RMON Maximum Port Broadcast Packets (%) (60) (SLA-ON-SERVER3)
 ◆ [BaseLine Percnt75 (<=)] [10.0.3.11] RMON Maximum Port Broadcast Packets (%) (60) (SLA-ON-SERVER3)
 ◆ [BaseLine Percnt90 (<=)] [10.0.3.11] RMON Maximum Port Broadcast Packets (%) (60) (SLA-ON-SERVER3)

27.04.2008 14:00 - 28.04.2008 15:00

[10.0.3.11] RMON Maximum Port Multicast Packets (%)



— [10.0.3.11] RMON Maximum Port Multicast Packets (%) (SLA-ON-SERVER3)

27.04.2008 14:00 - 28.04.2008 15:00

20. [10.0.3.11] RMON Maximum Port Multicast Packets (%)

		75<	90<			75<	90<
00:00-00:20	0,04	0,05	0,06	06:00-06:20	0	0	0
00:20-00:40	0,04	0,05	0,06	06:20-06:40	0	0	0
00:40-01:00	0	0	0	06:40-07:00	0	0	0
01:00-01:20	0,06	0,09	0,11	07:00-07:20	0,03	0,05	0,06
01:20-01:40	0,05	0,05	0,07	07:20-07:40	0,04	0,05	0,06
01:40-02:00	0	0	0	07:40-08:00	0	0	0
02:00-02:20	0,03	0,05	0,06	08:00-08:20	0,03	0,05	0,06
02:20-02:40	0,04	0,05	0,06	08:20-08:40	0,04	0,05	0,06
02:40-03:00	0	0	0	08:40-09:00	0	0	0
03:00-03:20	0,04	0,07	0,07	09:00-09:20	0	0	0
03:20-03:40	0,09	0,11	0,12	09:20-09:40	0	0	0
03:40-04:00	0,07	0,11	0,13	09:40-10:00	0	0	0
04:00-04:20	0,06	0,11	0,12	10:00-10:20	0	0	0
04:20-04:40	0,07	0,08	0,11	10:20-10:40	0	0	0
04:40-05:00	0,01	0	0,04	10:40-11:00	0	0	0
05:00-05:20	0,04	0,06	0,07	11:00-11:20	0	0	0
05:20-05:40	0,03	0,05	0,06	11:20-11:40	0	0	0
05:40-06:00	0	0	0	11:40-12:00	0	0	0

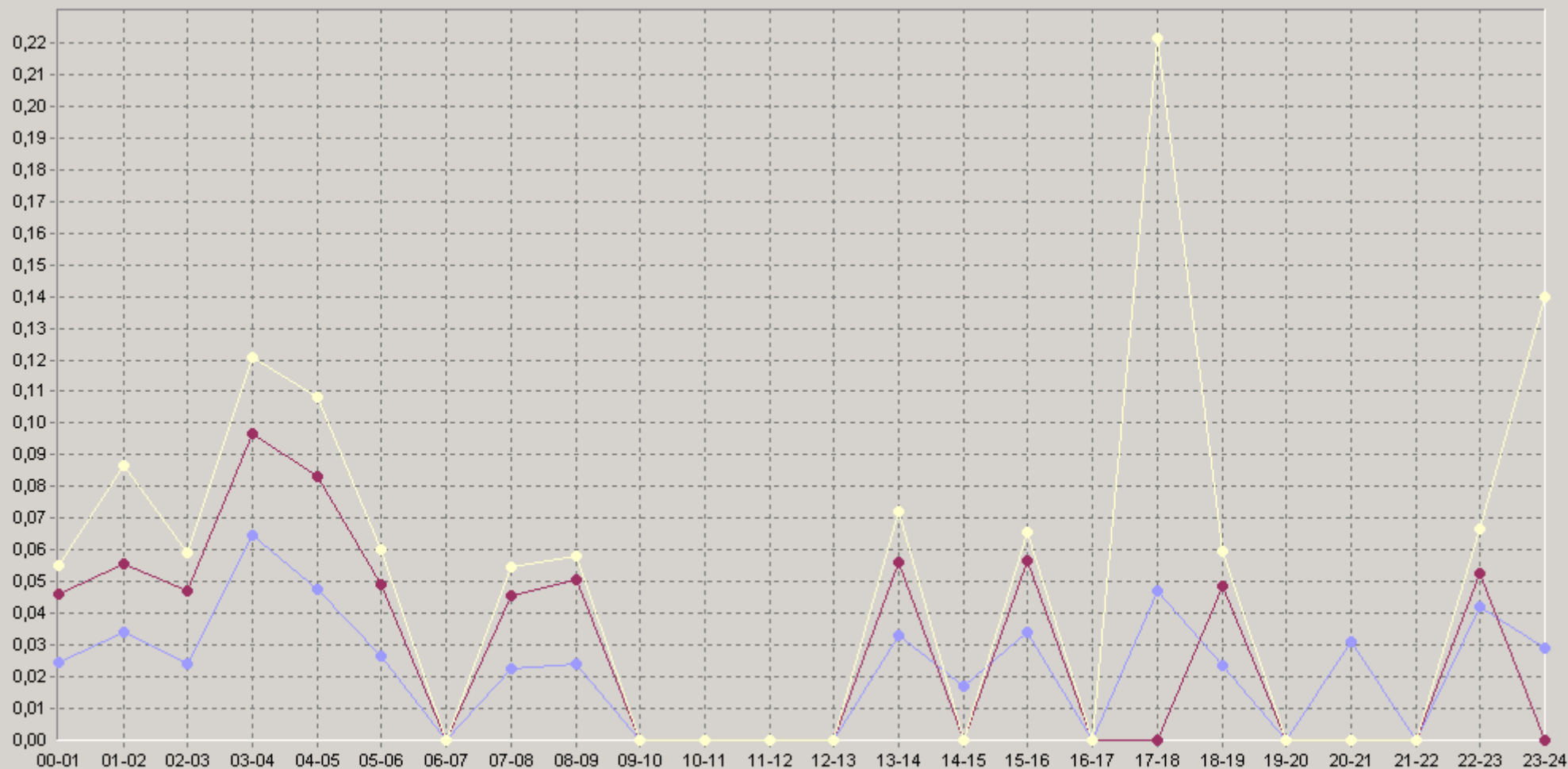
27.04.2008 14:00 - 28.04.2008 15:00

20. [10.0.3.11] RMON Maximum Port Multicast Packets (%)

		75<	90<			75<	90<
12:00-12:20	0	0	0	18:00-18:20	0,03	0,06	0,06
12:20-12:40	0	0	0	18:20-18:40	0,04	0,05	0,06
12:40-13:00	0	0	0	18:40-19:00	0	0	0
13:00-13:20	0,05	0,06	0,07	19:00-19:20	0	0	0
13:20-13:40	0,05	0,06	0,08	19:20-19:40	0	0	0
13:40-14:00	0	0	0	19:40-20:00	0	0	0
14:00-14:20	0,01	0	0	20:00-20:20	0,08	0	0,31
14:20-14:40	0,02	0	0	20:20-20:40	0	0	0
14:40-15:00	0,02	0	0	20:40-21:00	0,01	0	0
15:00-15:20	0,07	0,06	0,1	21:00-21:20	0	0	0
15:20-15:40	0,04	0,06	0,07	21:20-21:40	0	0	0
15:40-16:00	0	0	0	21:40-22:00	0	0	0
16:00-16:20	0	0	0	22:00-22:20	0,05	0,05	0,07
16:20-16:40	0	0	0	22:20-22:40	0,07	0,06	0,26
16:40-17:00	0	0	0	22:40-23:00	0	0	0
17:00-17:20	0,13	0,22	0,29	23:00-23:20	0,01	0	0
17:20-17:40	0,01	0	0	23:20-23:40	0,05	0	0,16
17:40-18:00	0	0	0	23:40-00:00	0,02	0	0

27.04.2008 14:00 - 28.04.2008 15:00

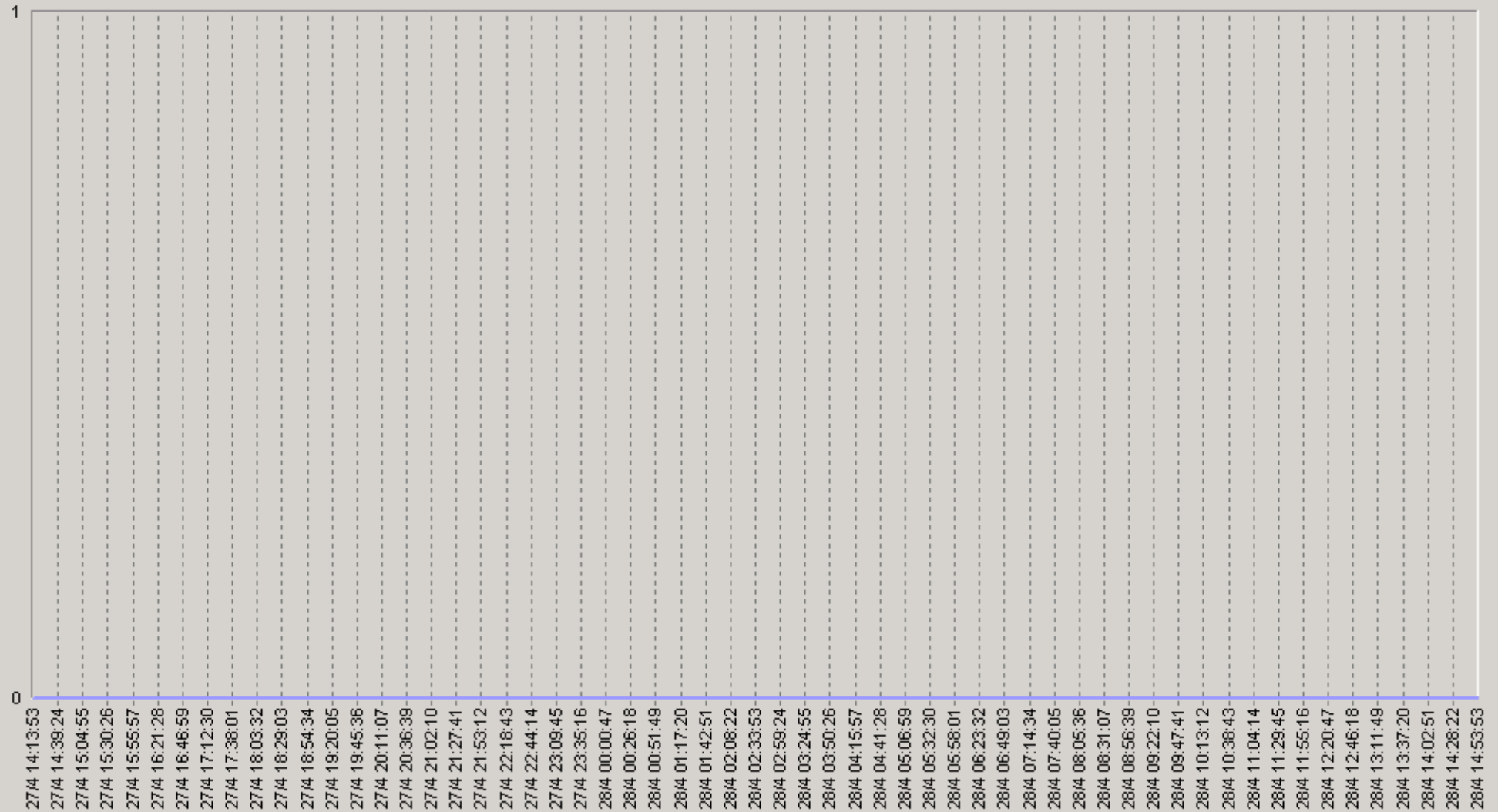
60. [10.0.3.11] RMON Maximum Port Multicast Packets (%)



◆ [BaseLine Avg] [10.0.3.11] RMON Maximum Port Multicast Packets (%) (60) (SLA-ON-SERVER3)
 ◆ [BaseLine Percnt75 (<=)] [10.0.3.11] RMON Maximum Port Multicast Packets (%) (60) (SLA-ON-SERVER3)
 ◆ [BaseLine Percnt90 (<=)] [10.0.3.11] RMON Maximum Port Multicast Packets (%) (60) (SLA-ON-SERVER3)

27.04.2008 14:00 - 28.04.2008 15:00

[10.0.3.11] RMON Maximum Port CRC-Align Errors (%)



[10.0.3.11] RMON Maximum Port CRC-Align Errors (%) (SLA-ON-SERVER3)

27.04.2008 14:00 - 28.04.2008 15:00

20 [10.0.3.11] RMON Maximum Port CRC-Align Errors (%)

		75<	90<			75<	90<
00:00-00:20	0	0	0	06:00-06:20	0	0	0
00:20-00:40	0	0	0	06:20-06:40	0	0	0
00:40-01:00	0	0	0	06:40-07:00	0	0	0
01:00-01:20	0	0	0	07:00-07:20	0	0	0
01:20-01:40	0	0	0	07:20-07:40	0	0	0
01:40-02:00	0	0	0	07:40-08:00	0	0	0
02:00-02:20	0	0	0	08:00-08:20	0	0	0
02:20-02:40	0	0	0	08:20-08:40	0	0	0
02:40-03:00	0	0	0	08:40-09:00	0	0	0
03:00-03:20	0	0	0	09:00-09:20	0	0	0
03:20-03:40	0	0	0	09:20-09:40	0	0	0
03:40-04:00	0	0	0	09:40-10:00	0	0	0
04:00-04:20	0	0	0	10:00-10:20	0	0	0
04:20-04:40	0	0	0	10:20-10:40	0	0	0
04:40-05:00	0	0	0	10:40-11:00	0	0	0
05:00-05:20	0	0	0	11:00-11:20	0	0	0
05:20-05:40	0	0	0	11:20-11:40	0	0	0
05:40-06:00	0	0	0	11:40-12:00	0	0	0

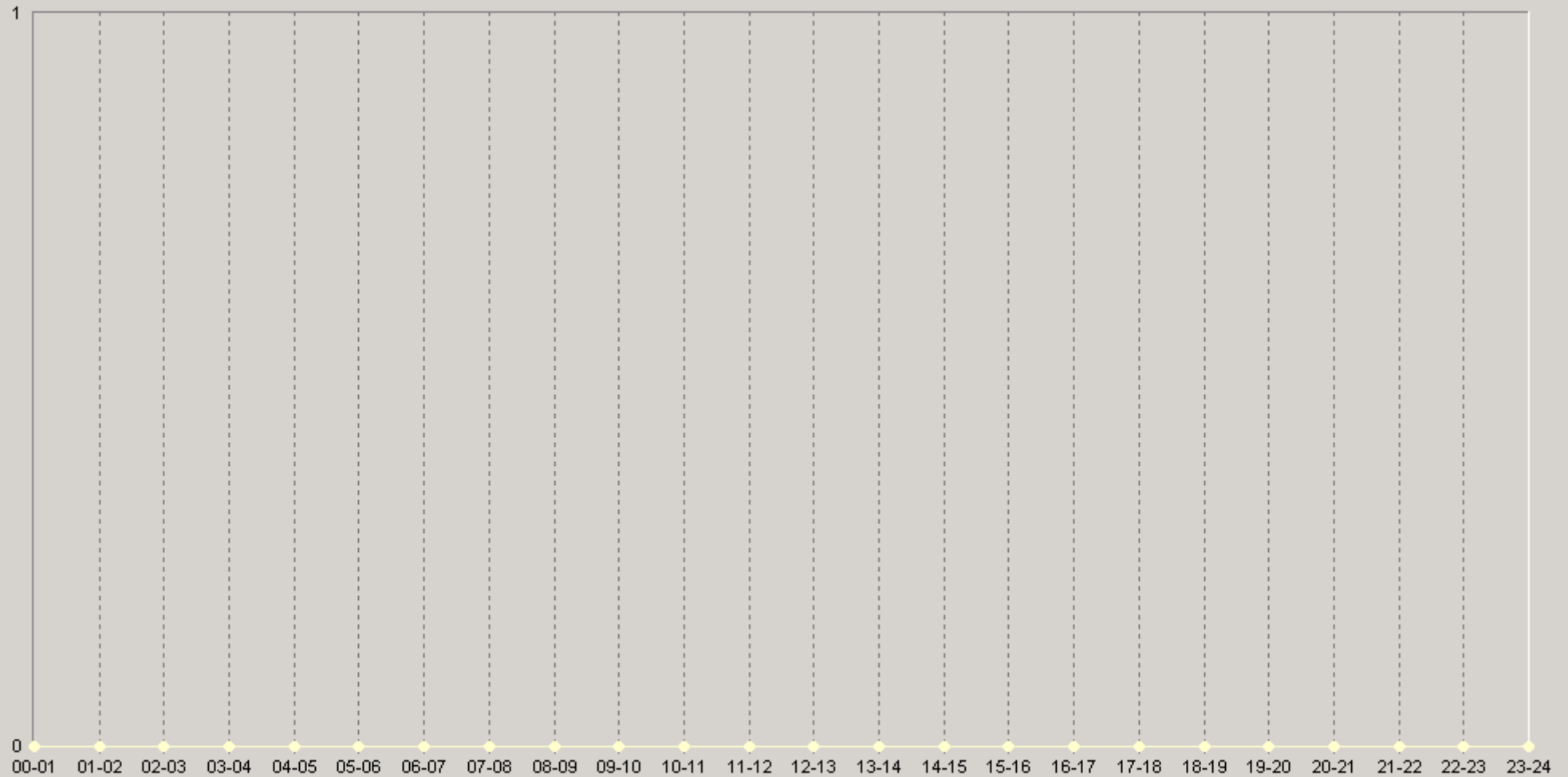
27.04.2008 14:00 - 28.04.2008 15:00

20 [10.0.3.11] RMON Maximum Port CRC-Align Errors (%)

		75<	90<			75<	90<
12:00-12:20	0	0	0	18:00-18:20	0	0	0
12:20-12:40	0	0	0	18:20-18:40	0	0	0
12:40-13:00	0	0	0	18:40-19:00	0	0	0
13:00-13:20	0	0	0	19:00-19:20	0	0	0
13:20-13:40	0	0	0	19:20-19:40	0	0	0
13:40-14:00	0	0	0	19:40-20:00	0	0	0
14:00-14:20	0	0	0	20:00-20:20	0	0	0
14:20-14:40	0	0	0	20:20-20:40	0	0	0
14:40-15:00	0	0	0	20:40-21:00	0	0	0
15:00-15:20	0	0	0	21:00-21:20	0	0	0
15:20-15:40	0	0	0	21:20-21:40	0	0	0
15:40-16:00	0	0	0	21:40-22:00	0	0	0
16:00-16:20	0	0	0	22:00-22:20	0	0	0
16:20-16:40	0	0	0	22:20-22:40	0	0	0
16:40-17:00	0	0	0	22:40-23:00	0	0	0
17:00-17:20	0	0	0	23:00-23:20	0	0	0
17:20-17:40	0	0	0	23:20-23:40	0	0	0
17:40-18:00	0	0	0	23:40-00:00	0	0	0

27.04.2008 14:00 - 28.04.2008 15:00

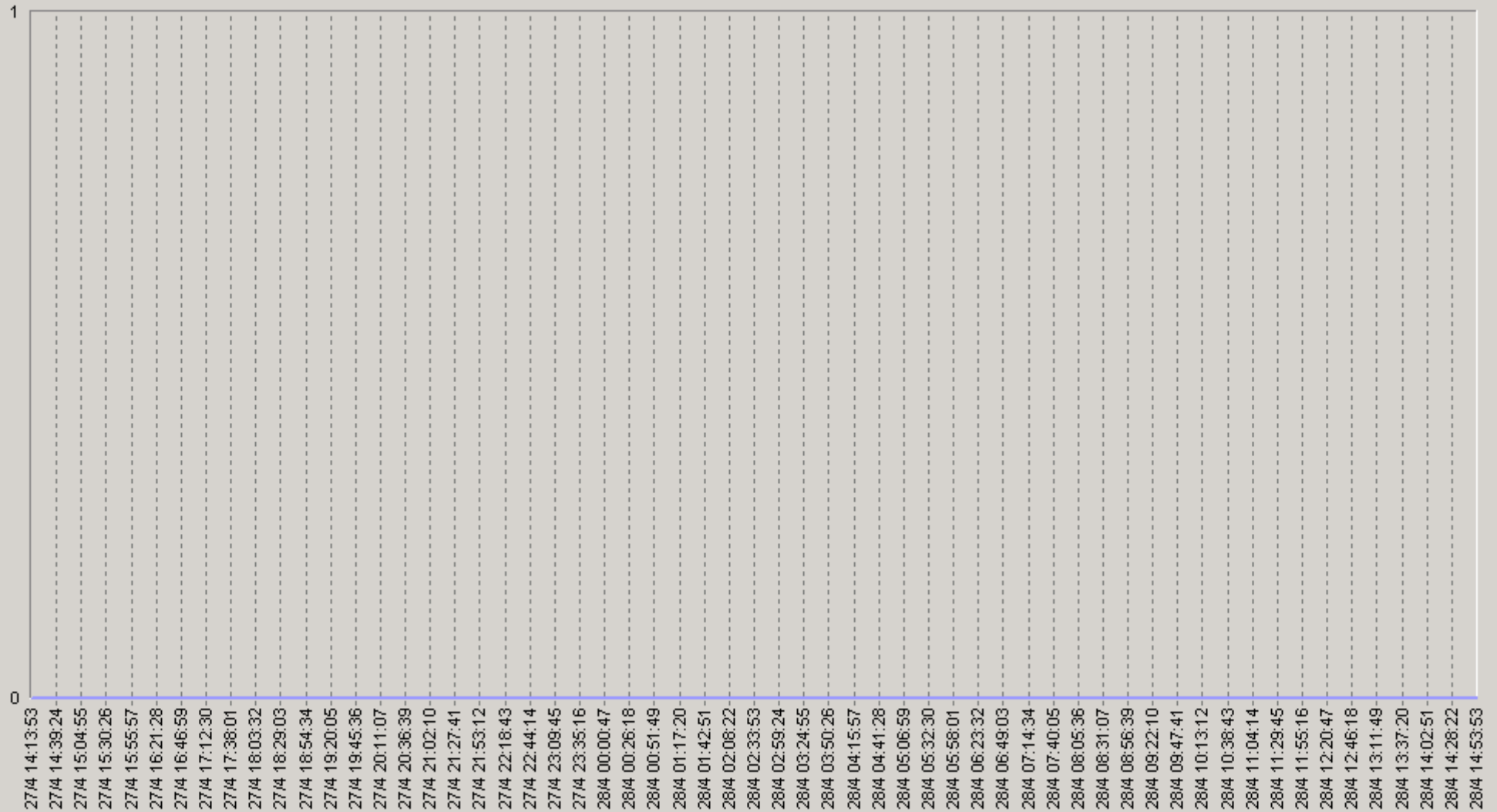
60 [10.0.3.11] RMON Maximum Port CRC-Align Errors (%)



◆ [BaseLine Avg] [10.0.3.11] RMON Maximum Port CRC-Align Errors (%) (60) (SLA-ON-SERVER3)
 ■ [BaseLine Percnt75 (<=)] [10.0.3.11] RMON Maximum Port CRC-Align Errors (%) (60) (SLA-ON-SERVER3)
 ● [BaseLine Percnt90 (<=)] [10.0.3.11] RMON Maximum Port CRC-Align Errors (%) (60) (SLA-ON-SERVER3)

27.04.2008 14:00 - 28.04.2008 15:00

[10.0.3.11] RMON Maximum Port Undersize Packets (%)



[10.0.3.11] RMON Maximum Port Undersize Packets (%)(SLA-ON-SERVER3)

27.04.2008 14:00 - 28.04.2008 15:00

20 [10.0.3.11] RMON Maximum Port Undersize Packets (%)

		75<	90<			75<	90<
00:00-00:20	0	0	0	06:00-06:20	0	0	0
00:20-00:40	0	0	0	06:20-06:40	0	0	0
00:40-01:00	0	0	0	06:40-07:00	0	0	0
01:00-01:20	0	0	0	07:00-07:20	0	0	0
01:20-01:40	0	0	0	07:20-07:40	0	0	0
01:40-02:00	0	0	0	07:40-08:00	0	0	0
02:00-02:20	0	0	0	08:00-08:20	0	0	0
02:20-02:40	0	0	0	08:20-08:40	0	0	0
02:40-03:00	0	0	0	08:40-09:00	0	0	0
03:00-03:20	0	0	0	09:00-09:20	0	0	0
03:20-03:40	0	0	0	09:20-09:40	0	0	0
03:40-04:00	0	0	0	09:40-10:00	0	0	0
04:00-04:20	0	0	0	10:00-10:20	0	0	0
04:20-04:40	0	0	0	10:20-10:40	0	0	0
04:40-05:00	0	0	0	10:40-11:00	0	0	0
05:00-05:20	0	0	0	11:00-11:20	0	0	0
05:20-05:40	0	0	0	11:20-11:40	0	0	0
05:40-06:00	0	0	0	11:40-12:00	0	0	0

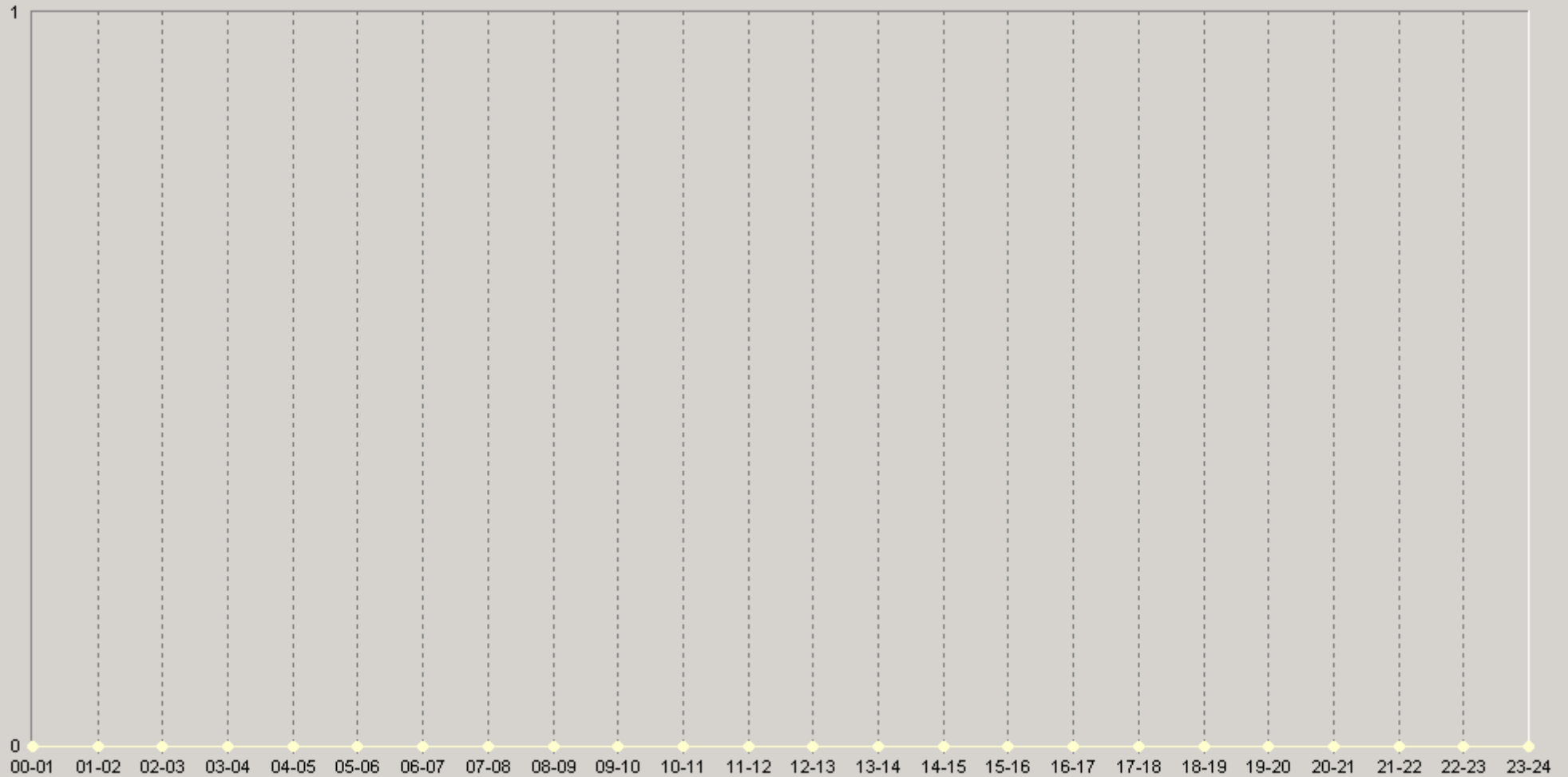
27.04.2008 14:00 - 28.04.2008 15:00

20 [10.0.3.11] RMON Maximum Port Undersize Packets (%)

		75<	90<			75<	90<
12:00-12:20	0	0	0	18:00-18:20	0	0	0
12:20-12:40	0	0	0	18:20-18:40	0	0	0
12:40-13:00	0	0	0	18:40-19:00	0	0	0
13:00-13:20	0	0	0	19:00-19:20	0	0	0
13:20-13:40	0	0	0	19:20-19:40	0	0	0
13:40-14:00	0	0	0	19:40-20:00	0	0	0
14:00-14:20	0	0	0	20:00-20:20	0	0	0
14:20-14:40	0	0	0	20:20-20:40	0	0	0
14:40-15:00	0	0	0	20:40-21:00	0	0	0
15:00-15:20	0	0	0	21:00-21:20	0	0	0
15:20-15:40	0	0	0	21:20-21:40	0	0	0
15:40-16:00	0	0	0	21:40-22:00	0	0	0
16:00-16:20	0	0	0	22:00-22:20	0	0	0
16:20-16:40	0	0	0	22:20-22:40	0	0	0
16:40-17:00	0	0	0	22:40-23:00	0	0	0
17:00-17:20	0	0	0	23:00-23:20	0	0	0
17:20-17:40	0	0	0	23:20-23:40	0	0	0
17:40-18:00	0	0	0	23:40-00:00	0	0	0

27.04.2008 14:00 - 28.04.2008 15:00

60 [10.0.3.11] RMON Maximum Port Undersize Packets (%)



◆ [BaseLine Avg] [10.0.3.11] RMON Maximum Port Undersize Packets (%)(60)(SLA-ON-SERVER3)
 ◆ [BaseLine Percnt75 (<=)] [10.0.3.11] RMON Maximum Port Undersize Packets (%)(60)(SLA-ON-SERVER3)
 ◆ [BaseLine Percnt90 (<=)] [10.0.3.11] RMON Maximum Port Undersize Packets (%)(60)(SLA-ON-SERVER3)

27.04.2008 14:00 - 28.04.2008 15:00

[10.0.3.11] RMON Maximum Port Oversize Packets (%)



— [10.0.3.11] RMON Maximum Port Oversize Packets (%) (SLA-ON-SERVER3)

27.04.2008 14:00 - 28.04.2008 15:00

20. [10.0.3.11] RMON Maximum Port Oversize Packets (%)

		75<	90<			75<	90<
00:00-00:20	0	0	0	06:00-06:20	0	0	0
00:20-00:40	0	0	0	06:20-06:40	0	0	0
00:40-01:00	0	0	0	06:40-07:00	0	0	0
01:00-01:20	0	0	0	07:00-07:20	0	0	0
01:20-01:40	0	0	0	07:20-07:40	0	0	0
01:40-02:00	0	0	0	07:40-08:00	0	0	0
02:00-02:20	0	0	0	08:00-08:20	0	0	0
02:20-02:40	0	0	0	08:20-08:40	0	0	0
02:40-03:00	0	0	0	08:40-09:00	0	0	0
03:00-03:20	0	0	0	09:00-09:20	0	0	0
03:20-03:40	0	0	0	09:20-09:40	0	0	0
03:40-04:00	0	0	0	09:40-10:00	0	0	0
04:00-04:20	0	0	0	10:00-10:20	0	0	0
04:20-04:40	0	0	0	10:20-10:40	0	0	0
04:40-05:00	0	0	0	10:40-11:00	0	0	0
05:00-05:20	0	0	0	11:00-11:20	0	0	0
05:20-05:40	0	0	0	11:20-11:40	0	0	0
05:40-06:00	0	0	0	11:40-12:00	0	0	0

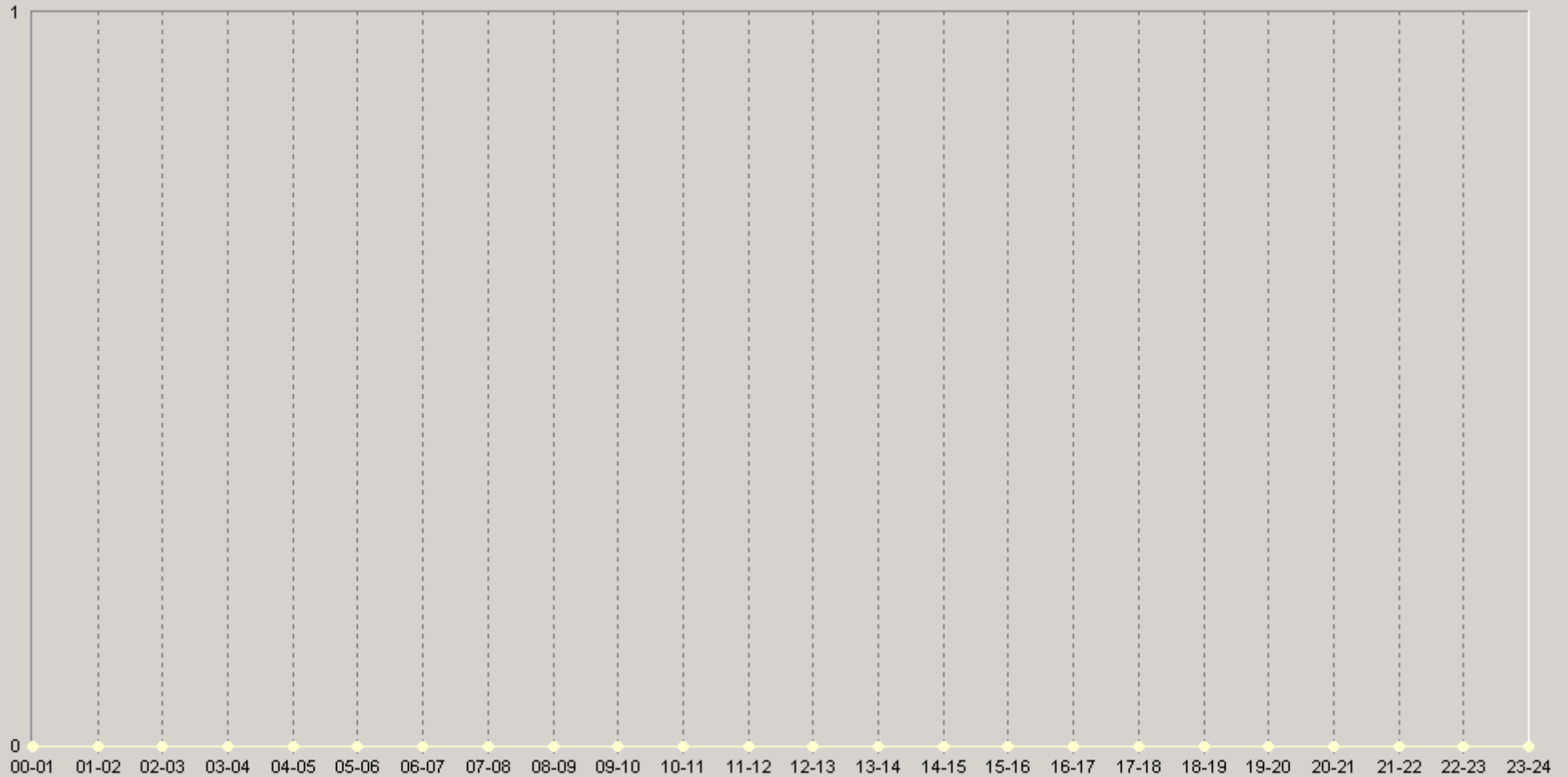
27.04.2008 14:00 - 28.04.2008 15:00

20. [10.0.3.11] RMON Maximum Port Oversize Packets (%)

		75<	90<			75<	90<
12:00-12:20	0	0	0	18:00-18:20	0	0	0
12:20-12:40	0	0	0	18:20-18:40	0	0	0
12:40-13:00	0	0	0	18:40-19:00	0	0	0
13:00-13:20	0	0	0	19:00-19:20	0	0	0
13:20-13:40	0	0	0	19:20-19:40	0	0	0
13:40-14:00	0	0	0	19:40-20:00	0	0	0
14:00-14:20	0	0	0	20:00-20:20	0	0	0
14:20-14:40	0	0	0	20:20-20:40	0	0	0
14:40-15:00	0	0	0	20:40-21:00	0	0	0
15:00-15:20	0	0	0	21:00-21:20	0	0	0
15:20-15:40	0	0	0	21:20-21:40	0	0	0
15:40-16:00	0	0	0	21:40-22:00	0	0	0
16:00-16:20	0	0	0	22:00-22:20	0	0	0
16:20-16:40	0	0	0	22:20-22:40	0	0	0
16:40-17:00	0	0	0	22:40-23:00	0	0	0
17:00-17:20	0	0	0	23:00-23:20	0	0	0
17:20-17:40	0	0	0	23:20-23:40	0	0	0
17:40-18:00	0	0	0	23:40-00:00	0	0	0

27.04.2008 14:00 - 28.04.2008 15:00

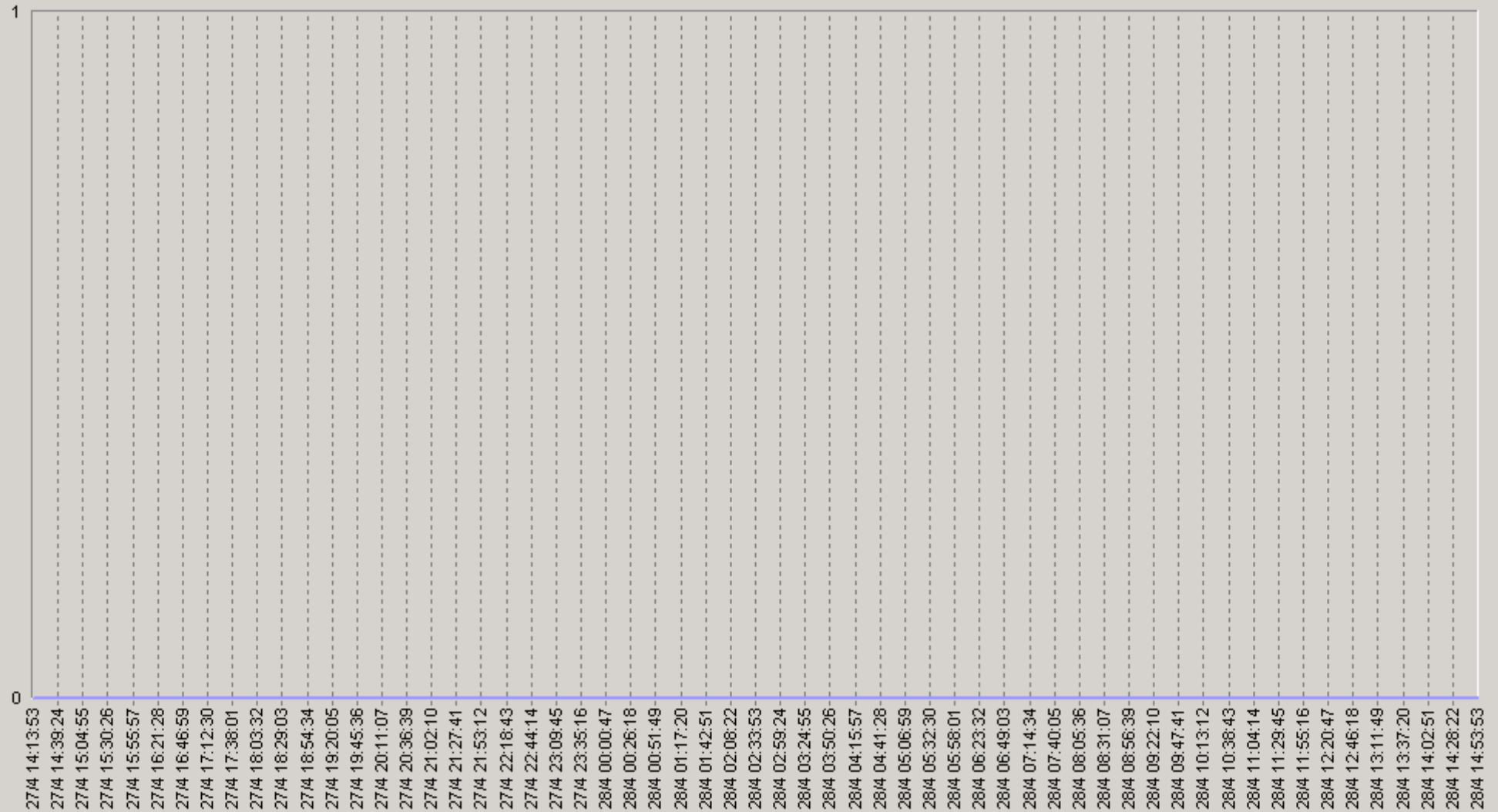
60. [10.0.3.11] RMON Maximum Port Oversize Packets (%)



◆ [BaseLine Avg] [10.0.3.11] RMON Maximum Port Oversize Packets (%) (60) (SLA-ON-SERVER3)
 ■ [BaseLine Percnt75 (<=)] [10.0.3.11] RMON Maximum Port Oversize Packets (%) (60) (SLA-ON-SERVER3)
 ● [BaseLine Percnt90 (<=)] [10.0.3.11] RMON Maximum Port Oversize Packets (%) (60) (SLA-ON-SERVER3)

27.04.2008 14:00 - 28.04.2008 15:00

[10.0.3.11] RMON Maximum Port Fragments (%)



— [10.0.3.11] RMON Maximum Port Fragments (%) (SLA-ON-SERVER3)

27.04.2008 14:00 - 28.04.2008 15:00

20: [10.0.3.11] RMON Maximum Port Fragments (%)

		75<	90<			75<	90<
00:00-00:20	0	0	0	06:00-06:20	0	0	0
00:20-00:40	0	0	0	06:20-06:40	0	0	0
00:40-01:00	0	0	0	06:40-07:00	0	0	0
01:00-01:20	0	0	0	07:00-07:20	0	0	0
01:20-01:40	0	0	0	07:20-07:40	0	0	0
01:40-02:00	0	0	0	07:40-08:00	0	0	0
02:00-02:20	0	0	0	08:00-08:20	0	0	0
02:20-02:40	0	0	0	08:20-08:40	0	0	0
02:40-03:00	0	0	0	08:40-09:00	0	0	0
03:00-03:20	0	0	0	09:00-09:20	0	0	0
03:20-03:40	0	0	0	09:20-09:40	0	0	0
03:40-04:00	0	0	0	09:40-10:00	0	0	0
04:00-04:20	0	0	0	10:00-10:20	0	0	0
04:20-04:40	0	0	0	10:20-10:40	0	0	0
04:40-05:00	0	0	0	10:40-11:00	0	0	0
05:00-05:20	0	0	0	11:00-11:20	0	0	0
05:20-05:40	0	0	0	11:20-11:40	0	0	0
05:40-06:00	0	0	0	11:40-12:00	0	0	0

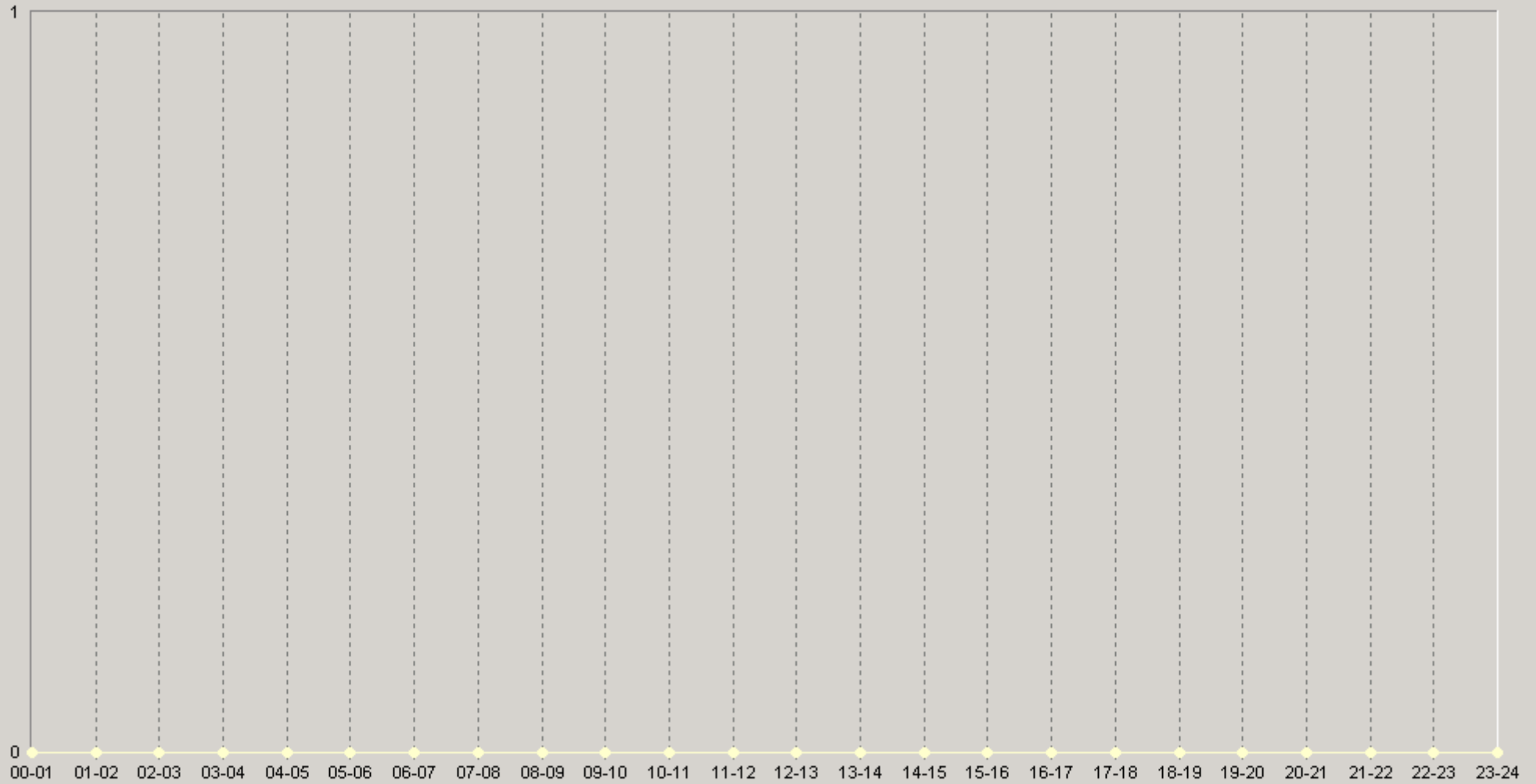
27.04.2008 14:00 - 28.04.2008 15:00

20: [10.0.3.11] RMON Maximum Port Fragments (%)

		75<	90<			75<	90<
12:00-12:20	0	0	0	18:00-18:20	0	0	0
12:20-12:40	0	0	0	18:20-18:40	0	0	0
12:40-13:00	0	0	0	18:40-19:00	0	0	0
13:00-13:20	0	0	0	19:00-19:20	0	0	0
13:20-13:40	0	0	0	19:20-19:40	0	0	0
13:40-14:00	0	0	0	19:40-20:00	0	0	0
14:00-14:20	0	0	0	20:00-20:20	0	0	0
14:20-14:40	0	0	0	20:20-20:40	0	0	0
14:40-15:00	0	0	0	20:40-21:00	0	0	0
15:00-15:20	0	0	0	21:00-21:20	0	0	0
15:20-15:40	0	0	0	21:20-21:40	0	0	0
15:40-16:00	0	0	0	21:40-22:00	0	0	0
16:00-16:20	0	0	0	22:00-22:20	0	0	0
16:20-16:40	0	0	0	22:20-22:40	0	0	0
16:40-17:00	0	0	0	22:40-23:00	0	0	0
17:00-17:20	0	0	0	23:00-23:20	0	0	0
17:20-17:40	0	0	0	23:20-23:40	0	0	0
17:40-18:00	0	0	0	23:40-00:00	0	0	0

27.04.2008 14:00 - 28.04.2008 15:00

60: [10.0.3.11] RMON Maximum Port Fragments (%)



◆ [BaseLine Avg] [10.0.3.11] RMON Maximum Port Fragments (%) (60) (SLA-ON-SERVER3)

◆ [BaseLine Percnt75 (<)] [10.0.3.11] RMON Maximum Port Fragments (%) (60) (SLA-ON-SERVER3)

◆ [BaseLine Percnt90 (<)] [10.0.3.11] RMON Maximum Port Fragments (%) (60) (SLA-ON-SERVER3)

27.04.2008 14:00 - 28.04.2008 15:00

[10.0.3.11] RMON Maximum Port Jabbers (%)



— [10.0.3.11] RMON Maximum Port Jabbers (%) (SLA-ON-SERVER3)

27.04.2008 14:00 - 28.04.2008 15:00

20: [10.0.3.11] RMON Maximum Port Jabbers (%)

		75<	90<			75<	90<
00:00-00:20	0	0	0	06:00-06:20	0	0	0
00:20-00:40	0	0	0	06:20-06:40	0	0	0
00:40-01:00	0	0	0	06:40-07:00	0	0	0
01:00-01:20	0	0	0	07:00-07:20	0	0	0
01:20-01:40	0	0	0	07:20-07:40	0	0	0
01:40-02:00	0	0	0	07:40-08:00	0	0	0
02:00-02:20	0	0	0	08:00-08:20	0	0	0
02:20-02:40	0	0	0	08:20-08:40	0	0	0
02:40-03:00	0	0	0	08:40-09:00	0	0	0
03:00-03:20	0	0	0	09:00-09:20	0	0	0
03:20-03:40	0	0	0	09:20-09:40	0	0	0
03:40-04:00	0	0	0	09:40-10:00	0	0	0
04:00-04:20	0	0	0	10:00-10:20	0	0	0
04:20-04:40	0	0	0	10:20-10:40	0	0	0
04:40-05:00	0	0	0	10:40-11:00	0	0	0
05:00-05:20	0	0	0	11:00-11:20	0	0	0
05:20-05:40	0	0	0	11:20-11:40	0	0	0
05:40-06:00	0	0	0	11:40-12:00	0	0	0

27.04.2008 14:00 - 28.04.2008 15:00

20: [10.0.3.11] RMON Maximum Port Jabbers (%)

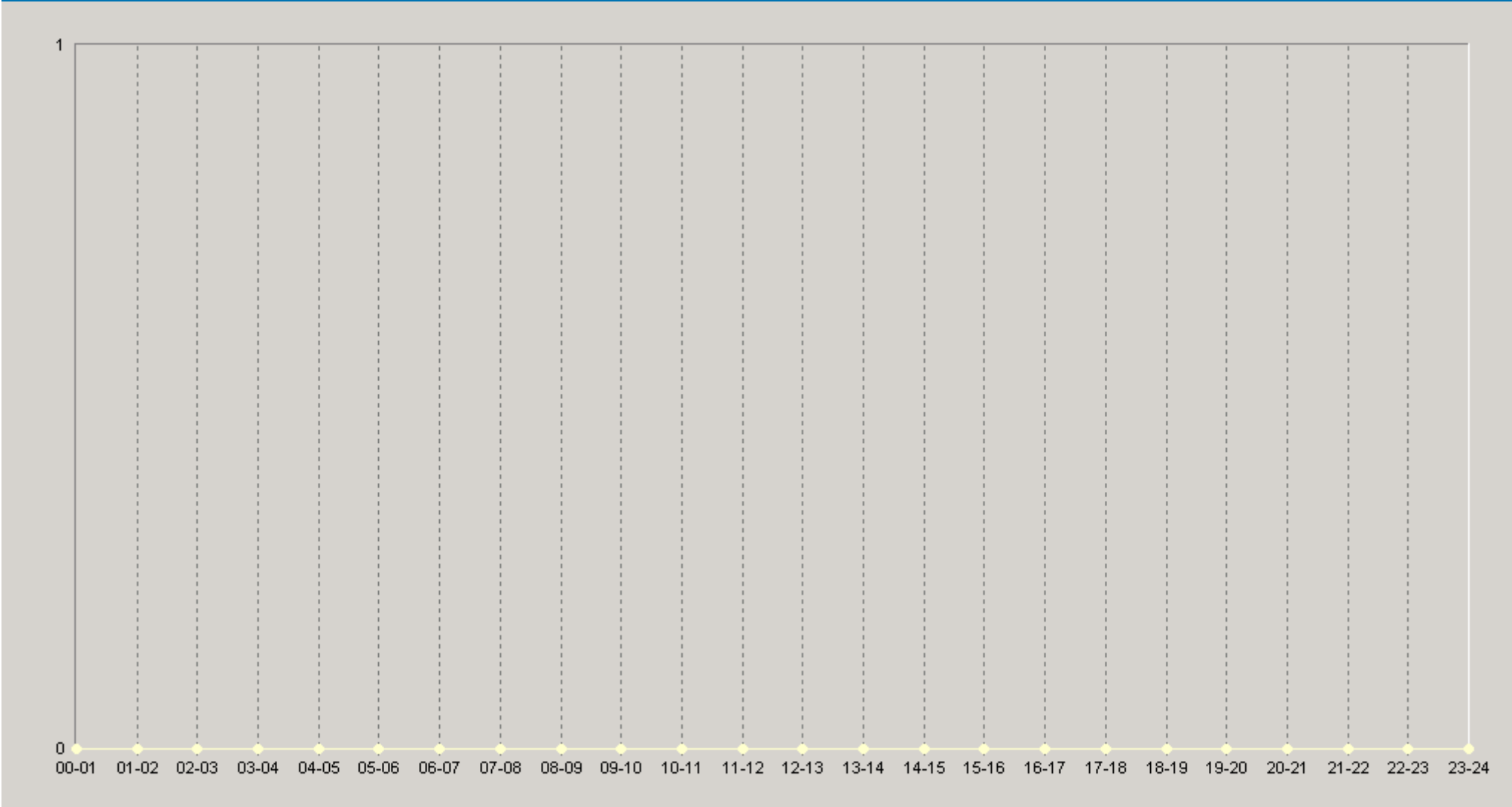
		75<	90<			75<	90<
12:00-12:20	0	0	0	18:00-18:20	0	0	0
12:20-12:40	0	0	0	18:20-18:40	0	0	0
12:40-13:00	0	0	0	18:40-19:00	0	0	0
13:00-13:20	0	0	0	19:00-19:20	0	0	0
13:20-13:40	0	0	0	19:20-19:40	0	0	0
13:40-14:00	0	0	0	19:40-20:00	0	0	0
14:00-14:20	0	0	0	20:00-20:20	0	0	0
14:20-14:40	0	0	0	20:20-20:40	0	0	0
14:40-15:00	0	0	0	20:40-21:00	0	0	0
15:00-15:20	0	0	0	21:00-21:20	0	0	0
15:20-15:40	0	0	0	21:20-21:40	0	0	0
15:40-16:00	0	0	0	21:40-22:00	0	0	0
16:00-16:20	0	0	0	22:00-22:20	0	0	0
16:20-16:40	0	0	0	22:20-22:40	0	0	0
16:40-17:00	0	0	0	22:40-23:00	0	0	0
17:00-17:20	0	0	0	23:00-23:20	0	0	0
17:20-17:40	0	0	0	23:20-23:40	0	0	0
17:40-18:00	0	0	0	23:40-00:00	0	0	0



RMON

27.04.2008 14:00 - 28.04.2008 15:00

60 [10.0.3.11] RMON Maximum Port Jabbers (%)

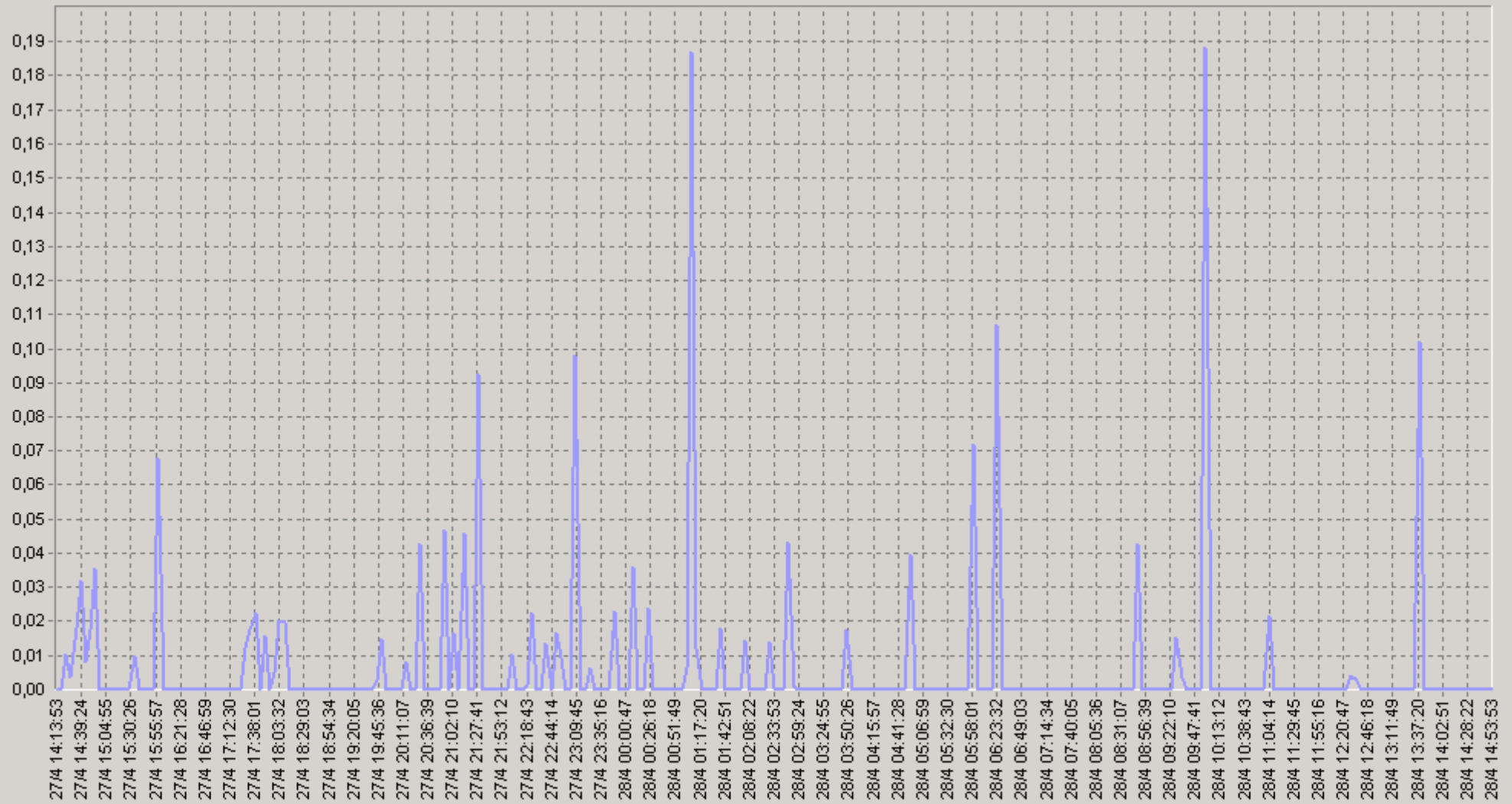


◆ [BaseLine Avg] [10.0.3.11] RMON Maximum Port Jabbers (%)(60)(SLA-ON-SERVER3)
◆ [BaseLine Percnt90 (<=)] [10.0.3.11] RMON Maximum Port Jabbers (%)(60)(SLA-ON-SERVER3)

◆ [BaseLine Percnt75 (<=)] [10.0.3.11] RMON Maximum Port Jabbers (%)(60)(SLA-ON-SERVER3)

27.04.2008 14:00 - 28.04.2008 15:00

[10.0.3.11] RMON Maximum Port Collisions (%)



— [10.0.3.11] RMON Maximum Port Collisions (%)(SLA-ON-SERVER3)

27.04.2008 14:00 - 28.04.2008 15:00

20. [10.0.3.11] RMON Maximum Port Collisions (%)

		75<	90<			75<	90<
00:00-00:20	0,01	0	0	06:00-06:20	0	0	0
00:20-00:40	0,01	0	0	06:20-06:40	0,03	0	0
00:40-01:00	0	0	0	06:40-07:00	0	0	0
01:00-01:20	0,05	0	0	07:00-07:20	0	0	0
01:20-01:40	0	0	0	07:20-07:40	0	0	0
01:40-02:00	0	0	0	07:40-08:00	0	0	0
02:00-02:20	0	0	0	08:00-08:20	0	0	0
02:20-02:40	0	0	0	08:20-08:40	0	0	0
02:40-03:00	0,01	0	0	08:40-09:00	0,01	0	0
03:00-03:20	0	0	0	09:00-09:20	0	0	0
03:20-03:40	0	0	0	09:20-09:40	0	0	0
03:40-04:00	0	0	0	09:40-10:00	0,05	0	0
04:00-04:20	0	0	0	10:00-10:20	0	0	0
04:20-04:40	0	0	0	10:20-10:40	0	0	0
04:40-05:00	0,01	0	0	10:40-11:00	0	0	0
05:00-05:20	0	0	0	11:00-11:20	0,01	0	0
05:20-05:40	0	0	0	11:20-11:40	0	0	0
05:40-06:00	0,02	0	0	11:40-12:00	0	0	0

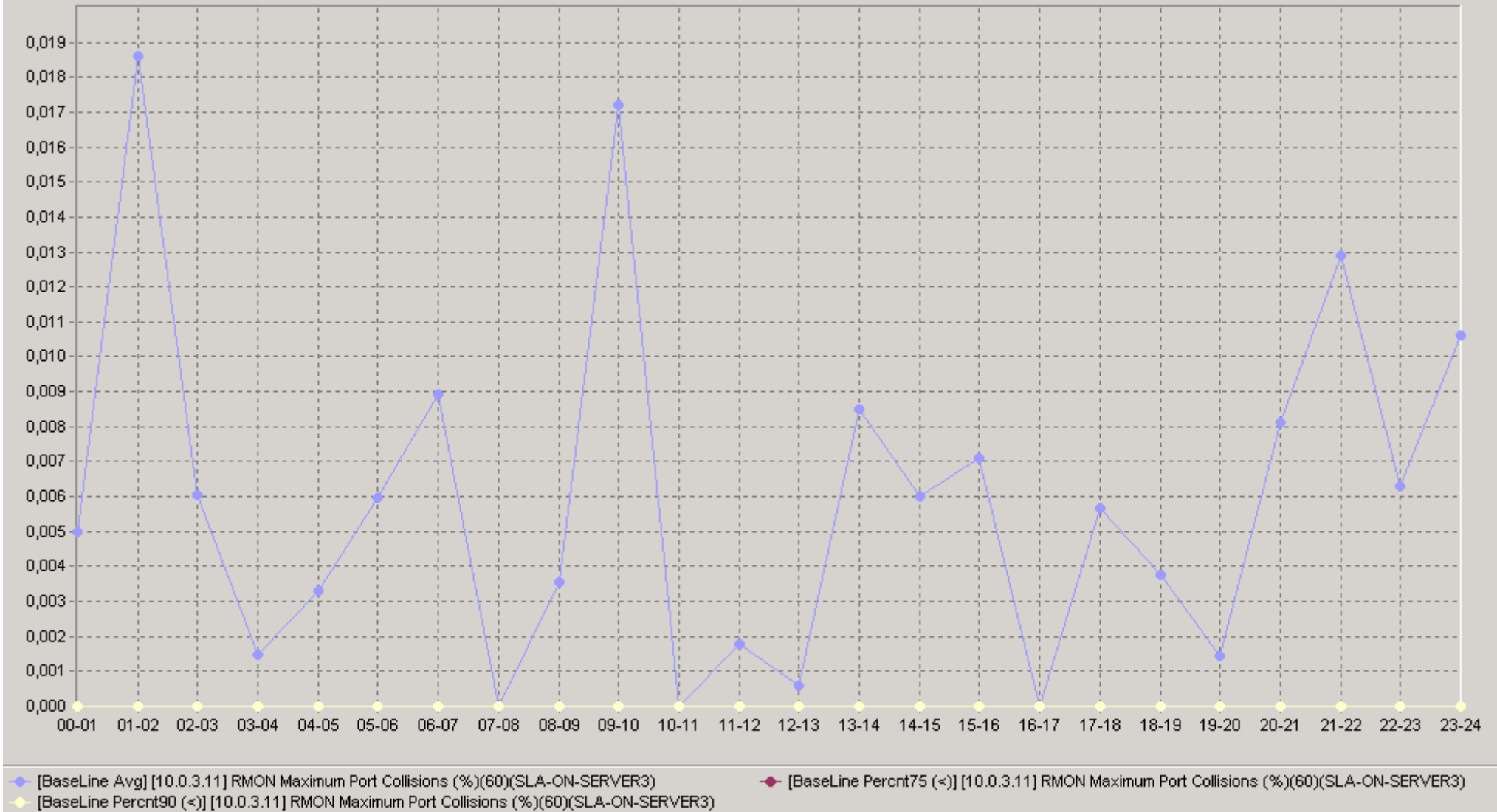
27.04.2008 14:00 - 28.04.2008 15:00

20. [10.0.3.11] RMON Maximum Port Collisions (%)

		75<	90<			75<	90<
12:00-12:20	0	0	0	18:00-18:20	0,01	0	0
12:20-12:40	0	0	0	18:20-18:40	0	0	0
12:40-13:00	0	0	0	18:40-19:00	0	0	0
13:00-13:20	0	0	0	19:00-19:20	0	0	0
13:20-13:40	0	0	0	19:20-19:40	0	0	0
13:40-14:00	0,03	0	0	19:40-20:00	0	0	0
14:00-14:20	0	0	0	20:00-20:20	0	0	0
14:20-14:40	0,01	0	0,02	20:20-20:40	0,01	0	0
14:40-15:00	0,01	0	0	20:40-21:00	0,01	0	0
15:00-15:20	0	0	0	21:00-21:20	0,02	0	0
15:20-15:40	0	0	0	21:20-21:40	0,02	0	0
15:40-16:00	0,02	0	0	21:40-22:00	0	0	0
16:00-16:20	0	0	0	22:00-22:20	0	0	0
16:20-16:40	0	0	0	22:20-22:40	0,01	0	0
16:40-17:00	0	0	0	22:40-23:00	0,01	0	0,05
17:00-17:20	0	0	0	23:00-23:20	0,02	0	0,05
17:20-17:40	0,01	0	0,06	23:20-23:40	0	0	0
17:40-18:00	0	0	0	23:40-00:00	0,01	0	0

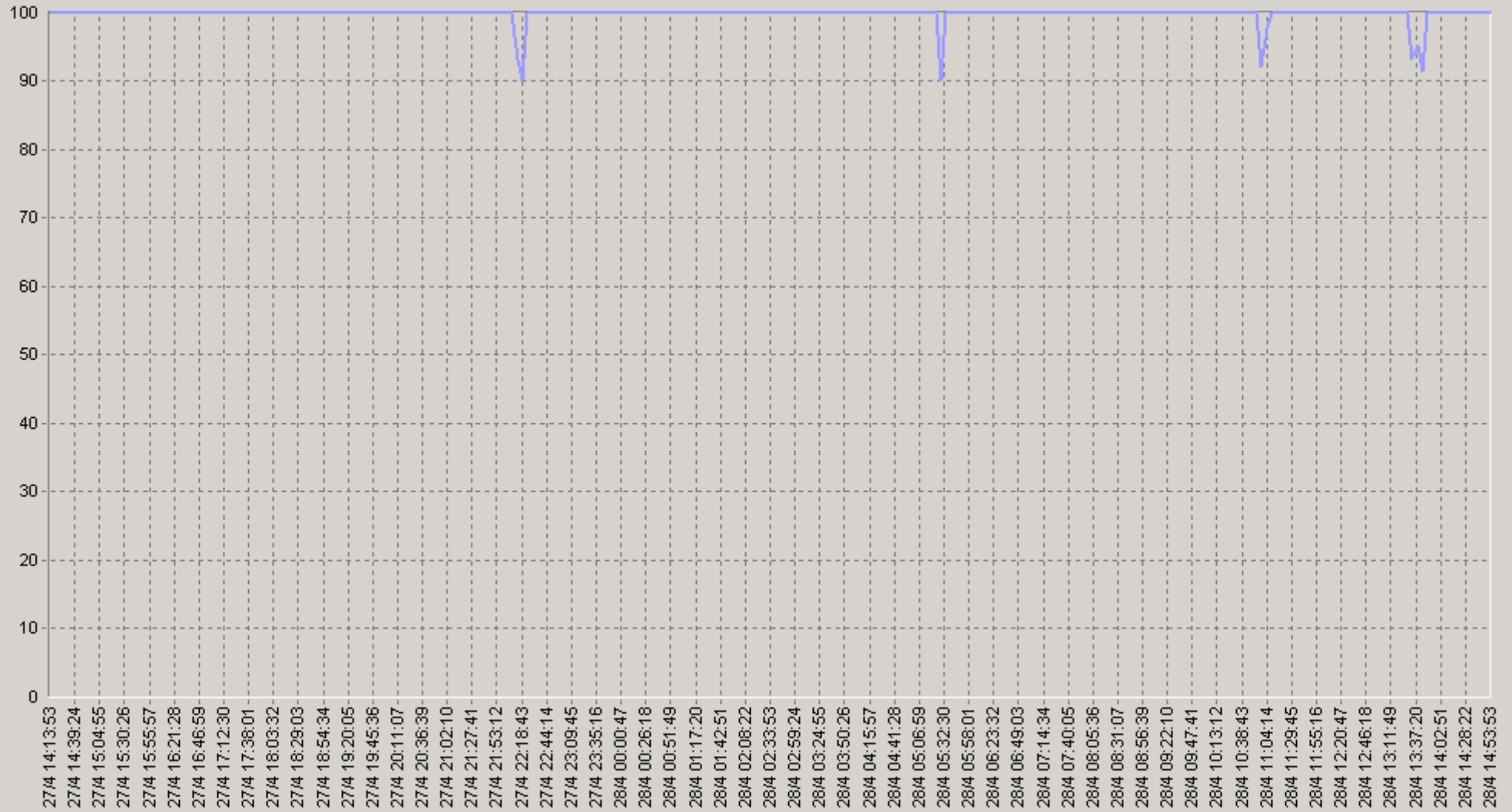
27.04.2008 14:00 - 28.04.2008 15:00

60 [10.0.3.11] RMON Maximum Port Collisions (%)



27.04.2008 14:00 - 28.04.2008 15:00

[10.0.3.11] RMON Device SNMP Availability (%)



— [10.0.3.11] RMON Device SNMP Availability (%) (SLA-ON-SERVER3)

27.04.2008 14:00 - 28.04.2008 15:00

2Q [10.0.3.11] RMON Device SNMP Availability (%)

		75>	90>			75>	90>
00:00-00:20	100	100	100	06:00-06:20	100	100	100
00:20-00:40	100	100	100	06:20-06:40	100	100	100
00:40-01:00	100	100	100	06:40-07:00	100	100	100
01:00-01:20	100	100	100	07:00-07:20	100	100	100
01:20-01:40	100	100	100	07:20-07:40	100	100	100
01:40-02:00	100	100	100	07:40-08:00	100	100	100
02:00-02:20	100	100	100	08:00-08:20	100	100	100
02:20-02:40	100	100	100	08:20-08:40	100	100	100
02:40-03:00	100	100	100	08:40-09:00	100	100	100
03:00-03:20	100	100	100	09:00-09:20	100	100	100
03:20-03:40	100	100	100	09:20-09:40	100	100	100
03:40-04:00	100	100	100	09:40-10:00	100	100	100
04:00-04:20	100	100	100	10:00-10:20	100	100	100
04:20-04:40	100	100	100	10:20-10:40	100	100	100
04:40-05:00	100	100	100	10:40-11:00	100	100	100
05:00-05:20	100	100	100	11:00-11:20	97,5	100	100
05:20-05:40	97,5	100	100	11:20-11:40	100	100	100
05:40-06:00	100	100	100	11:40-12:00	100	100	100

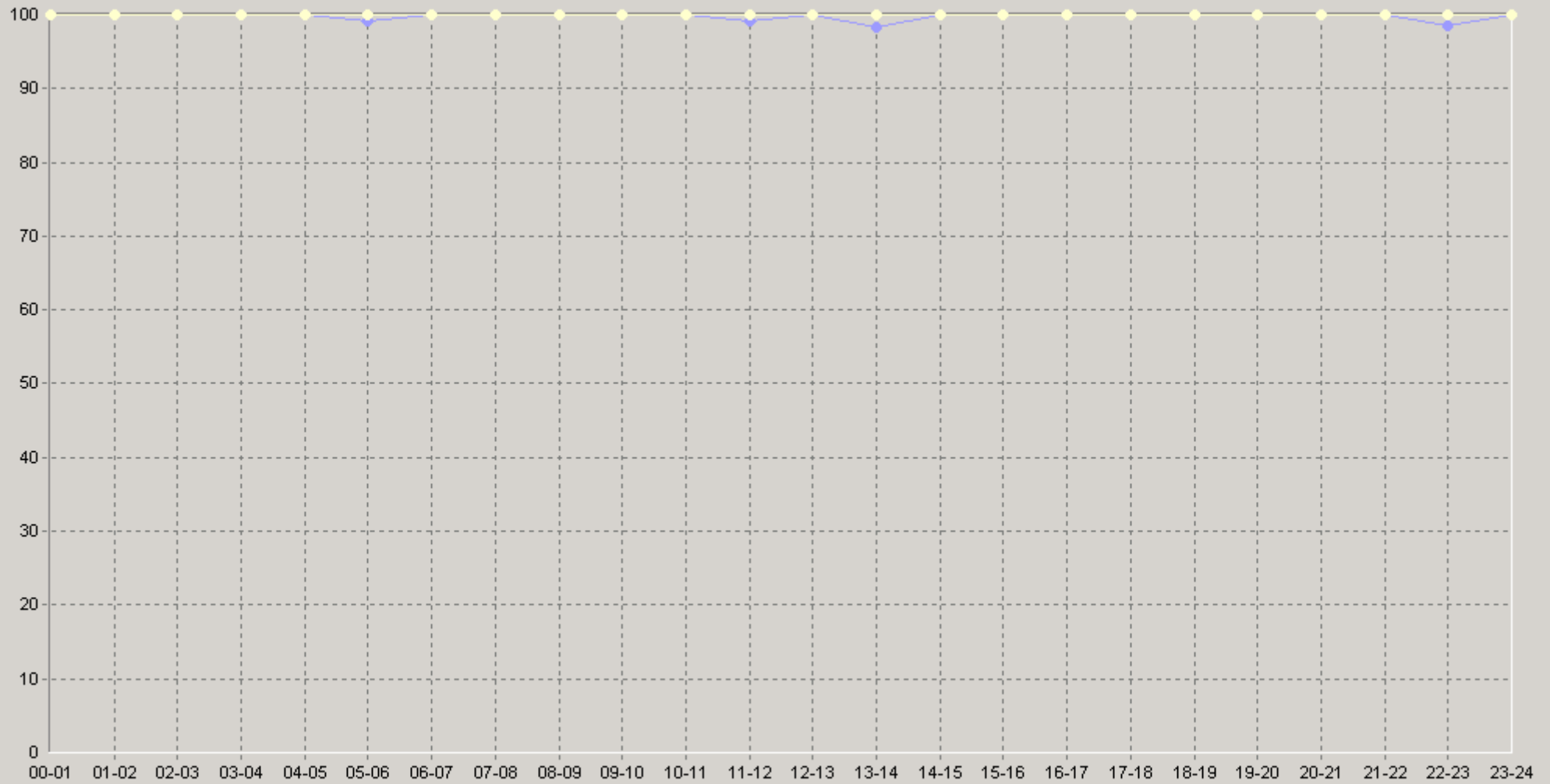
27.04.2008 14:00 - 28.04.2008 15:00

2Q [10.0.3.11] RMON Device SNMP Availability (%)

		75>	90>			75>	90>
12:00-12:20	100	100	100	18:00-18:20	100	100	100
12:20-12:40	100	100	100	18:20-18:40	100	100	100
12:40-13:00	100	100	100	18:40-19:00	100	100	100
13:00-13:20	100	100	100	19:00-19:20	100	100	100
13:20-13:40	98,3	100	100	19:20-19:40	100	100	100
13:40-14:00	96,7	100	100	19:40-20:00	100	100	100
14:00-14:20	100	100	100	20:00-20:20	100	100	100
14:20-14:40	100	100	100	20:20-20:40	100	100	100
14:40-15:00	100	100	100	20:40-21:00	100	100	100
15:00-15:20	100	100	100	21:00-21:20	100	100	100
15:20-15:40	100	100	100	21:20-21:40	100	100	100
15:40-16:00	100	100	100	21:40-22:00	100	100	100
16:00-16:20	100	100	100	22:00-22:20	95,8	100	100
16:20-16:40	100	100	100	22:20-22:40	100	100	100
16:40-17:00	100	100	100	22:40-23:00	100	100	100
17:00-17:20	100	100	100	23:00-23:20	100	100	100
17:20-17:40	100	100	100	23:20-23:40	100	100	100
17:40-18:00	100	100	100	23:40-00:00	100	100	100

27.04.2008 14:00 - 28.04.2008 15:00

60 [10.0.3.11] RMON Device SNMP Availability (%)



◆ [BaseLine Avg] [10.0.3.11] RMON Device SNMP Availability (%) (60) (SLA-ON-SERVER3)
 ◆ [BaseLine Percnt90 (>)] [10.0.3.11] RMON Device SNMP Availability (%) (60) (SLA-ON-SERVER3)

◆ [BaseLine Percnt75 (>)] [10.0.3.11] RMON Device SNMP Availability (%) (60) (SLA-ON-SERVER3)