

25.04.2008 17:20 - 27.04.2008 13:20



	Cisco IP SLA G.729					
	IP- ■	■	■	■	■	
IP SLA G 729 [10.0.3.252->62.61.7.2] SNMP Device Availability (%)	>=99 99,7%	<99 0%	<96 0%	<94 0%	<90 0,27%	2618
IP SLA G 729 [10.0.3.252->62.61.7.2] MOS	>=4,07 0%	<4,07 71,2%	<3,6 12,8%	<3,1 15,7%	<2,6 0,27%	2610
IP SLA G 729 [10.0.3.252->62.61.7.2] ICPIF	<=10 0%	>10 65,2%	>20 16,2%	>30 18,4%	>45 0,23%	2610
IP SLA G 729 [10.0.3.252->62.61.7.2] Delay (usec)	<=85 000 77,8%	>85 000 21,5%	>200 000 0,54%	>290 000 0,11%	>370 000 0,11%	2609
IP SLA G 729 [10.0.3.252->62.61.7.2] PacketLoss (%)	<=1 47,3%	>1 11,3%	>2 8,31%	>3 9,27%	>5 23,8%	2610
IP SLA G 729 [10.0.3.252->62.61.7.2] Jitter (usec)	<=50 000 37,7%	>50 000 28,1%	>60 000 25,4%	>80 000 5,21%	>100 000 3,6%	2610
IP SLA G 729 [10.0.3.252->62.61.7.2] The Number of Round Trip Operations	>=95 4,98%	<95 12,9%	<85 15,2%	<70 19,5%	<50 47,4%	2610
	IP- ( )	0,04%	→ 2,18%	→ 10,1%	→ 30,3%	2618

(2 )

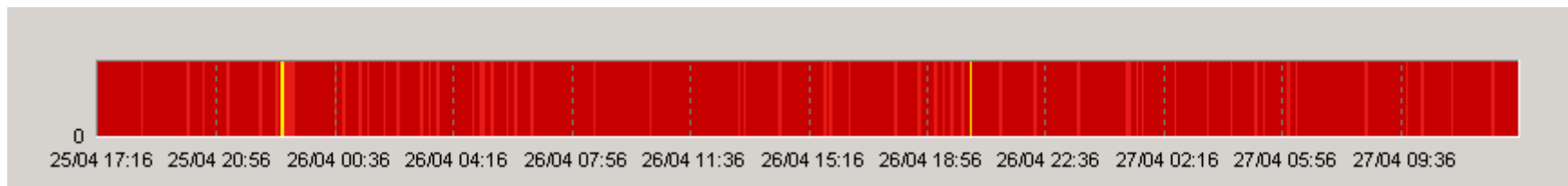
ProLAN

ProLAN.

PROLAN,

PROLAN  
PARTNER@PROLAN.RU

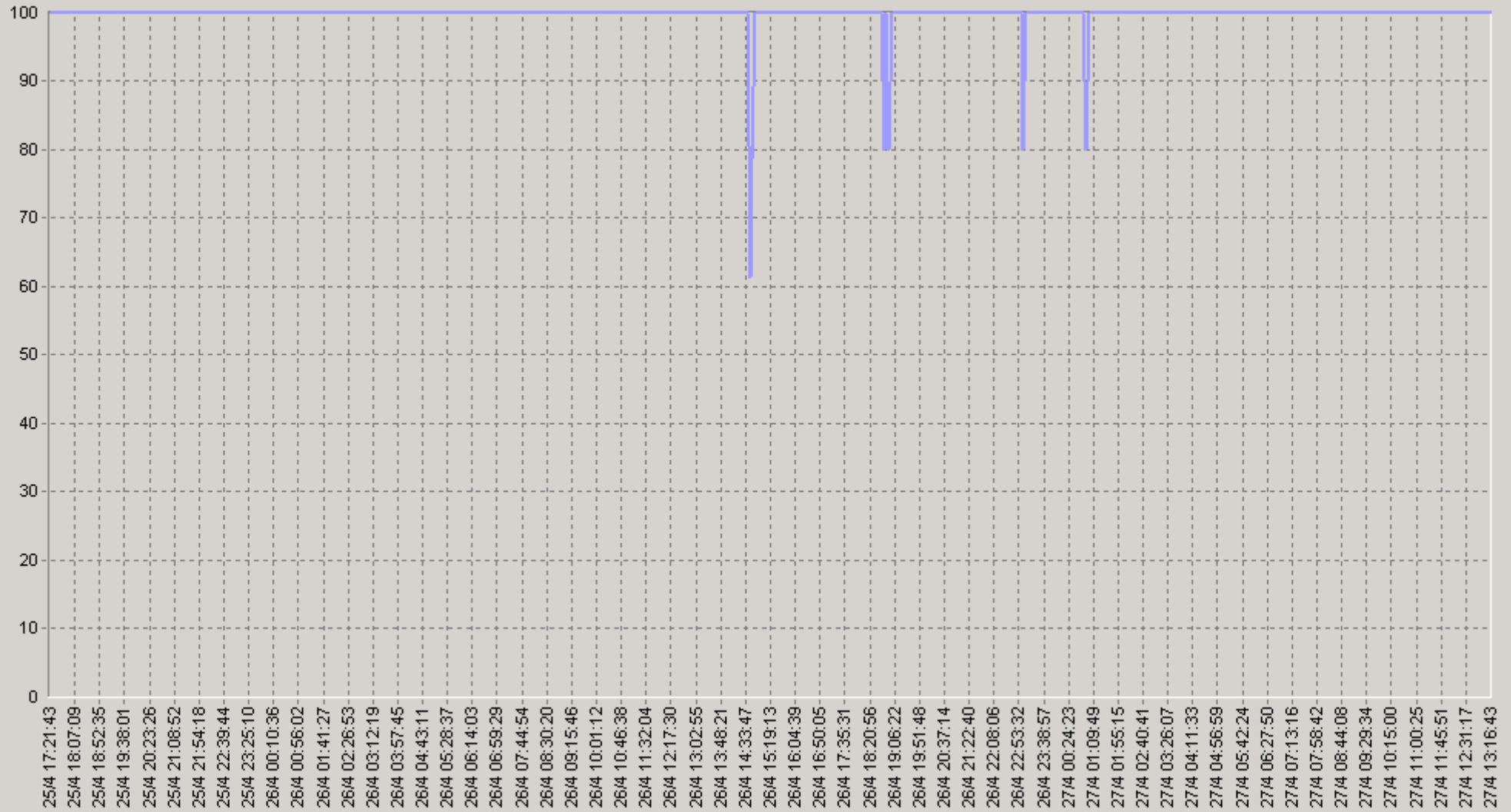
« »



0 25/04 17:16 25/04 20:58 26/04 00:36 26/04 04:16 26/04 07:56 26/04 11:36 26/04 15:16 26/04 18:56 26/04 22:36 27/04 02:16 27/04 05:56 27/04 09:36

25.04.2008 17:20 - 27.04.2008 13:20

## IP SLA G729 [10.0.3.252-&gt;62.61.7.2] SNMP Device Availability (%)



IP SLA G729 [10.0.3.252-&gt;62.61.7.2] SNMP Device Availability (%) (SLA-ON-SERVER3)

25.04.2008 17:20 - 27.04.2008 13:20

## 20 IP SLA G729 [10.0.3.252-&gt;62.61.7.2] SNMP Device Availability (%)

		75>	90>			75>	90>
00:00-00:20	100	100	100	06:00-06:20	100	100	100
00:20-00:40	100	100	100	06:20-06:40	100	100	100
00:40-01:00	97,4	100	100	06:40-07:00	100	100	100
01:00-01:20	100	100	100	07:00-07:20	100	100	100
01:20-01:40	100	100	100	07:20-07:40	100	100	100
01:40-02:00	100	100	100	07:40-08:00	100	100	100
02:00-02:20	100	100	100	08:00-08:20	100	100	100
02:20-02:40	100	100	100	08:20-08:40	100	100	100
02:40-03:00	100	100	100	08:40-09:00	100	100	100
03:00-03:20	100	100	100	09:00-09:20	100	100	100
03:20-03:40	100	100	100	09:20-09:40	100	100	100
03:40-04:00	100	100	100	09:40-10:00	100	100	100
04:00-04:20	100	100	100	10:00-10:20	100	100	100
04:20-04:40	100	100	100	10:20-10:40	100	100	100
04:40-05:00	100	100	100	10:40-11:00	100	100	100
05:00-05:20	100	100	100	11:00-11:20	100	100	100
05:20-05:40	100	100	100	11:20-11:40	100	100	100
05:40-06:00	100	100	100	11:40-12:00	100	100	100

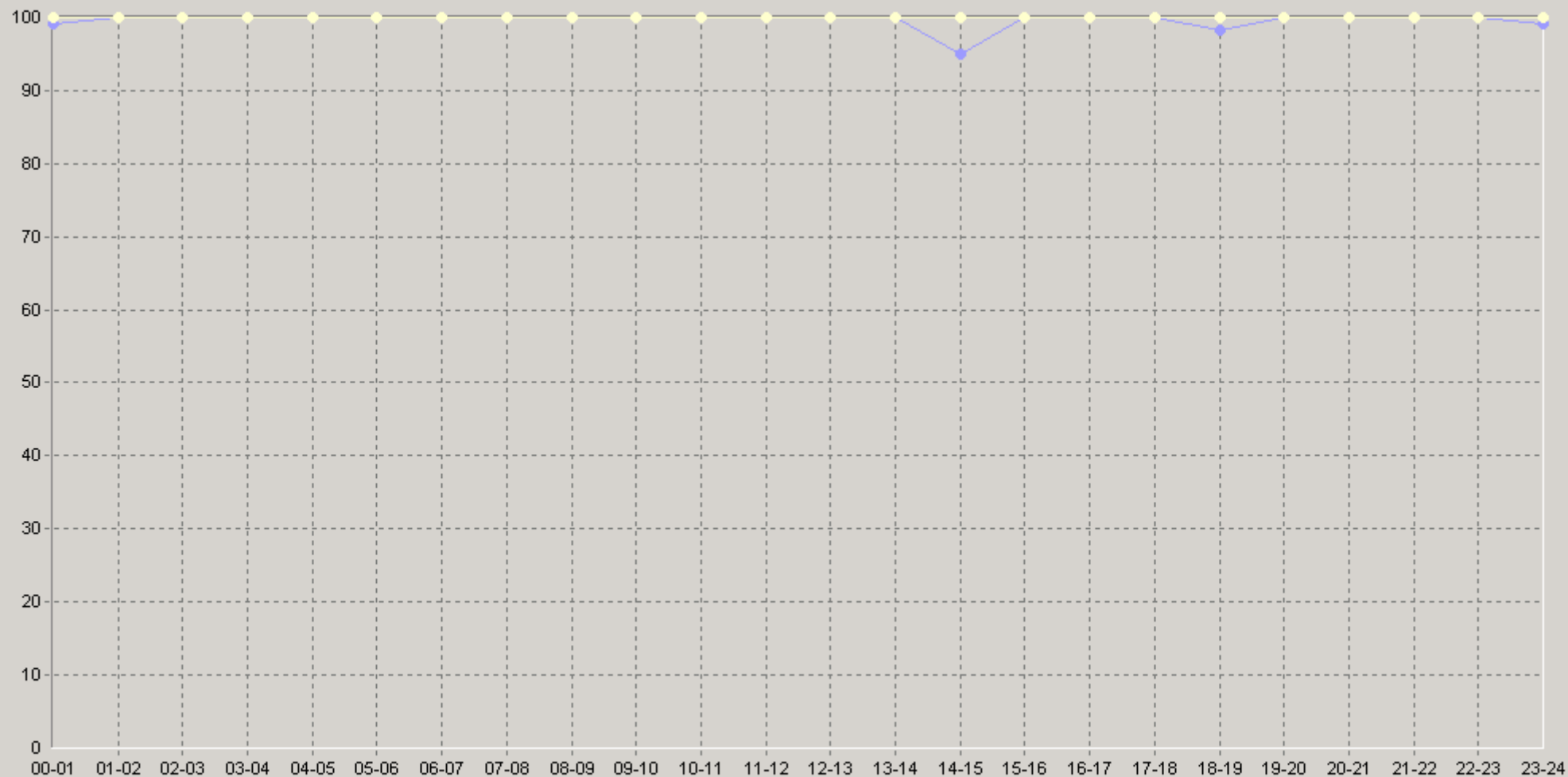
25.04.2008 17:20 - 27.04.2008 13:20

## 20 IP SLA G729 [10.0.3.252-&gt;62.61.7.2] SNMP Device Availability (%)

		75>	90>			75>	90>
12:00-12:20	100	100	100	18:00-18:20	100	100	100
12:20-12:40	100	100	100	18:20-18:40	100	100	100
12:40-13:00	100	100	100	18:40-19:00	95	100	100
13:00-13:20	100	100	100	19:00-19:20	100	100	100
13:20-13:40	100	100	100	19:20-19:40	100	100	100
13:40-14:00	100	100	100	19:40-20:00	100	100	100
14:00-14:20	100	100	100	20:00-20:20	100	100	100
14:20-14:40	100	100	100	20:20-20:40	100	100	100
14:40-15:00	85	100	0	20:40-21:00	100	100	100
15:00-15:20	100	100	100	21:00-21:20	100	100	100
15:20-15:40	100	100	100	21:20-21:40	100	100	100
15:40-16:00	100	100	100	21:40-22:00	100	100	100
16:00-16:20	100	100	100	22:00-22:20	100	100	100
16:20-16:40	100	100	100	22:20-22:40	100	100	100
16:40-17:00	100	100	100	22:40-23:00	100	100	100
17:00-17:20	100	100	100	23:00-23:20	97,1	100	100
17:20-17:40	100	100	100	23:20-23:40	100	100	100
17:40-18:00	100	100	100	23:40-00:00	100	100	100

25.04.2008 17:20 - 27.04.2008 13:20

## 6Q IP SLA G729 [10.0.3.252-&gt;62.61.7.2] SNMP Device Availability (%)



◆ [BaseLine Avg] IP SLA G729 [10.0.3.252->62.61.7.2] SNMP Device Availability (%) (60) (SLA-ON-SERVER3)  
 ◆ [BaseLine Percnt75 (>)] IP SLA G729 [10.0.3.252->62.61.7.2] SNMP Device Availability (%) (60) (SLA-ON-SERVER3)  
 ◆ [BaseLine Percnt90 (>)] IP SLA G729 [10.0.3.252->62.61.7.2] SNMP Device Availability (%) (60) (SLA-ON-SERVER3)



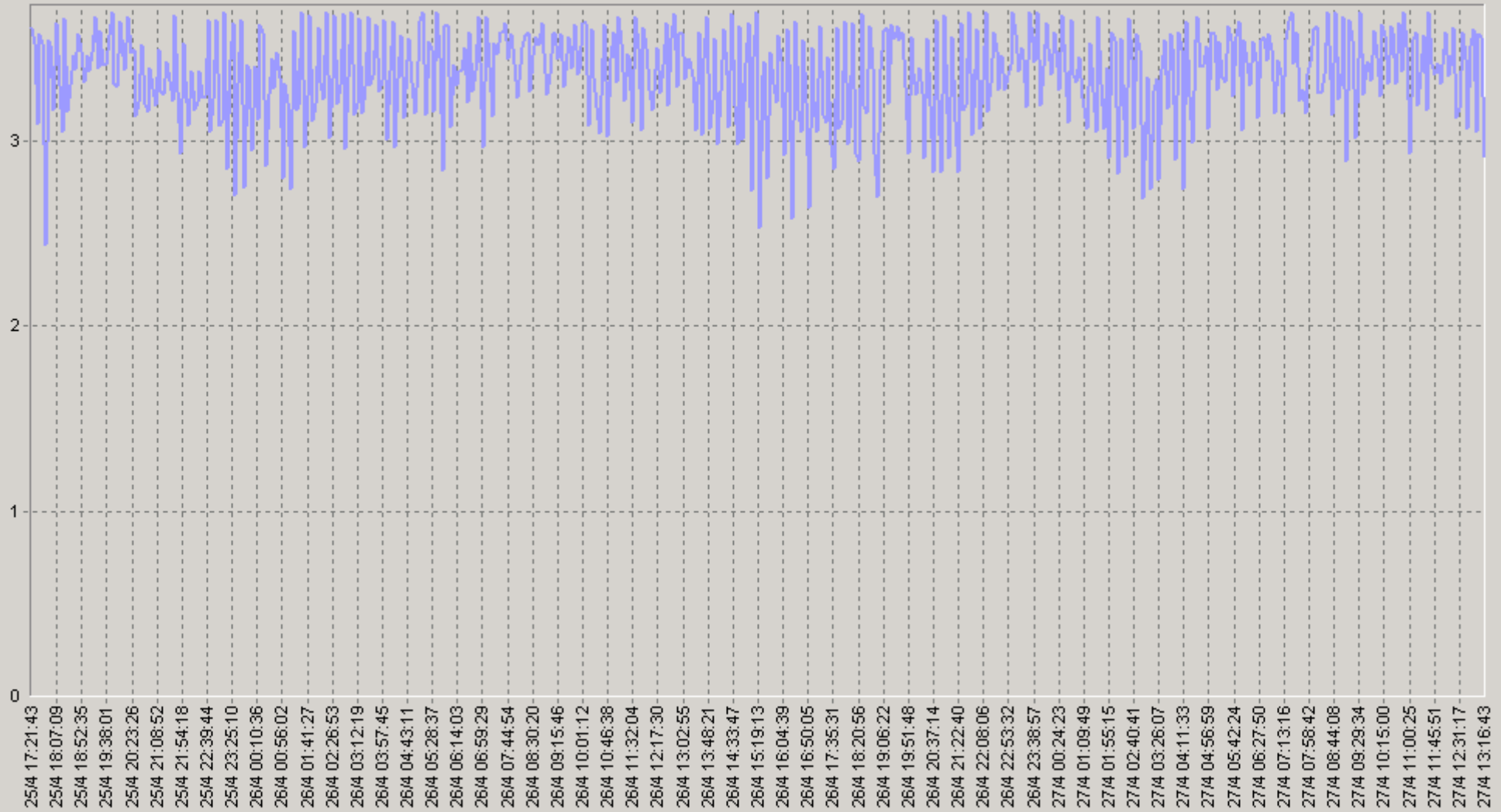
IP-

Cisco IP SLA

G.729

25.04.2008 17:20 - 27.04.2008 13:20

IP SLA G 729 [10.0.3.252->62.61.7.2] MOS



— IP SLA G729 [10.0.3.252->62.61.7.2] MOS(SLA-ON-SERVER3)

25.04.2008 17:20 - 27.04.2008 13:20

## 20 IP SLA G729 [10.0.3.252-&gt;62.61.7.2] MOS

		75>	90>		75>	90>
00:00-00:20	3,75	3,6	3,05	06:00-06:20	3,7	3,15
00:20-00:40	3,69	3,45	3,05	06:20-06:40	3,77	2,8
00:40-01:00	3,6	3,4	2,7	06:40-07:00	3,73	3,05
01:00-01:20	3,59	3,3	2,75	07:00-07:20	3,66	2,9
01:20-01:40	3,63	3,15	2,8	07:20-07:40	3,91	3,6
01:40-02:00	3,59	3,45	2,8	07:40-08:00	3,73	2,95
02:00-02:20	3,76	3,6	3,1	08:00-08:20	3,78	3,3
02:20-02:40	3,64	3,3	2,85	08:20-08:40	3,77	3,3
02:40-03:00	3,59	2,85	2,8	08:40-09:00	3,76	3,15
03:00-03:20	3,59	3,15	2,95	09:00-09:20	3,8	3,3
03:20-03:40	3,63	3,3	2,85	09:20-09:40	3,71	3,15
03:40-04:00	3,68	3,55	2,8	09:40-10:00	3,79	3,3
04:00-04:20	3,73	3,55	3,1	10:00-10:20	3,82	3,15
04:20-04:40	3,63	3,3	2,85	10:20-10:40	3,7	3,15
04:40-05:00	3,69	3,45	2,85	10:40-11:00	3,82	2,95
05:00-05:20	3,84	3,76	3,1	11:00-11:20	3,73	3
05:20-05:40	3,82	3,76	3,15	11:20-11:40	3,78	2,9
05:40-06:00	3,72	3,46	2,85	11:40-12:00	3,72	3,1

25.04.2008 17:20 - 27.04.2008 13:20

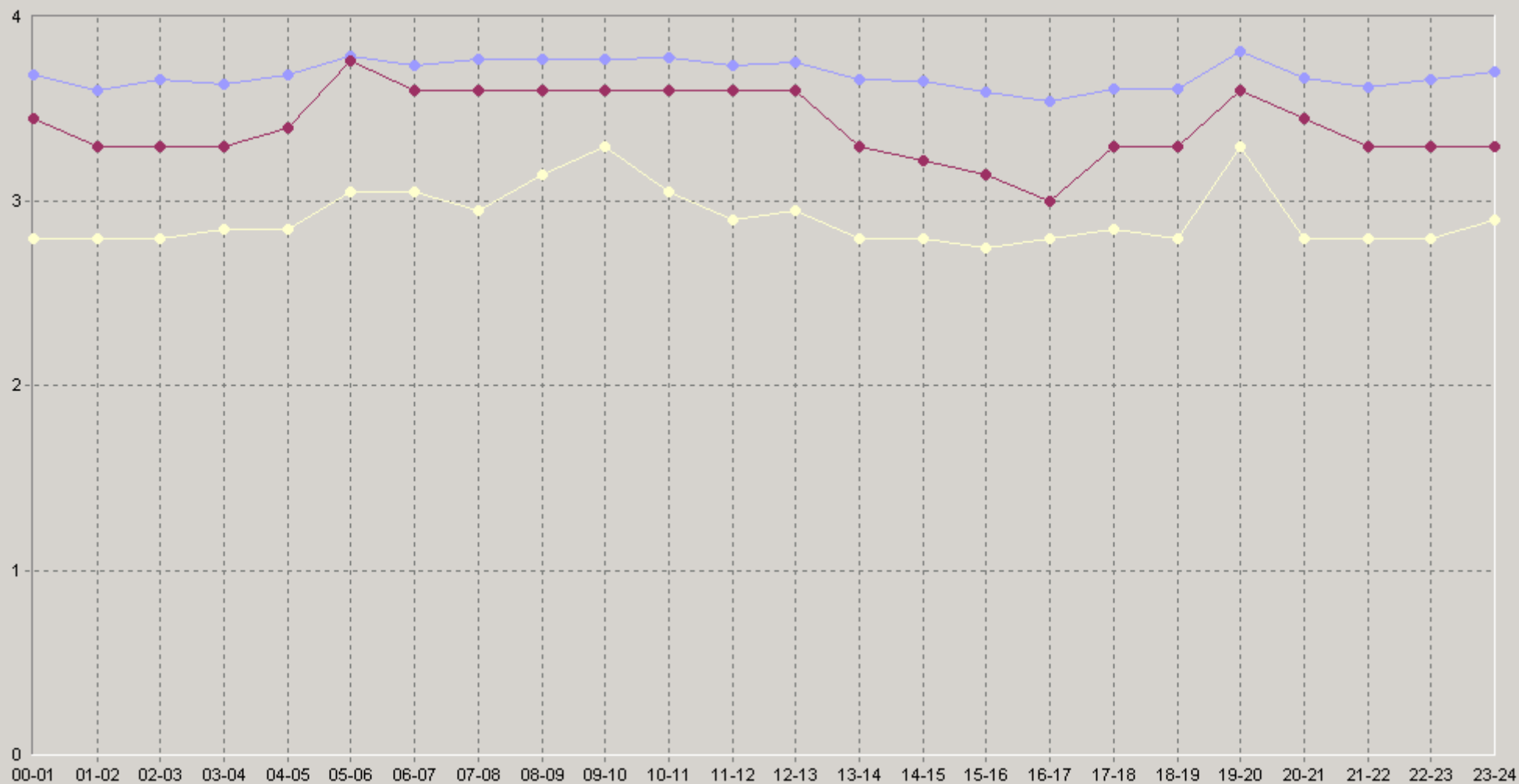
## 20 IP SLA G729 [10.0.3.252-&gt;62.61.7.2] MOS

		75>	90>			75>	90>
12:00-12:20	3,73	3,6	2,95	18:00-18:20	3,53	3	2,8
12:20-12:40	3,71	3,45	2,8	18:20-18:40	3,65	3,3	2,75
12:40-13:00	3,81	3,76	3,25	18:40-19:00	3,65	3,4	2,8
13:00-13:20	3,7	3,6	2,95	19:00-19:20	3,82	3,76	3,45
13:20-13:40	3,58	2,9	2,8	19:20-19:40	3,87	3,76	3,6
13:40-14:00	3,68	3,1	2,8	19:40-20:00	3,74	3,45	3,15
14:00-14:20	3,69	3,45	3	20:00-20:20	3,77	3,6	3,3
14:20-14:40	3,66	3,45	2,8	20:20-20:40	3,55	3,3	2,8
14:40-15:00	3,59	3,05	2,8	20:40-21:00	3,67	3,45	2,8
15:00-15:20	3,71	3,45	2,8	21:00-21:20	3,56	3,3	2,85
15:20-15:40	3,32	2,75	2,75	21:20-21:40	3,59	3,3	2,85
15:40-16:00	3,74	3,45	3,3	21:40-22:00	3,7	3,4	2,8
16:00-16:20	3,67	3,45	2,85	22:00-22:20	3,58	3,1	2,85
16:20-16:40	3,42	2,85	2,75	22:20-22:40	3,69	3,6	2,8
16:40-17:00	3,55	3	2,8	22:40-23:00	3,72	3,45	2,8
17:00-17:20	3,58	3,3	2,9	23:00-23:20	3,71	3,34	3,1
17:20-17:40	3,59	3,05	2,85	23:20-23:40	3,71	3,3	2,8
17:40-18:00	3,64	3,4	2,85	23:40-00:00	3,69	3,3	2,9



25.04.2008 17:20 - 27.04.2008 13:20

## 60 IP SLA G729 [10.0.3.252-&gt;62.61.7.2] MOS



◆ [BaseLine Avg] IP SLA G729 [10.0.3.252->62.61.7.2] MOS(60)(SLA-ON-SERVER3)  
 ◆ [BaseLine Percnt90 (>=)] IP SLA G729 [10.0.3.252->62.61.7.2] MOS(60)(SLA-ON-SERVER3)

◆ [BaseLine Percnt75 (>=)] IP SLA G729 [10.0.3.252->62.61.7.2] MOS(60)(SLA-ON-SERVER3)



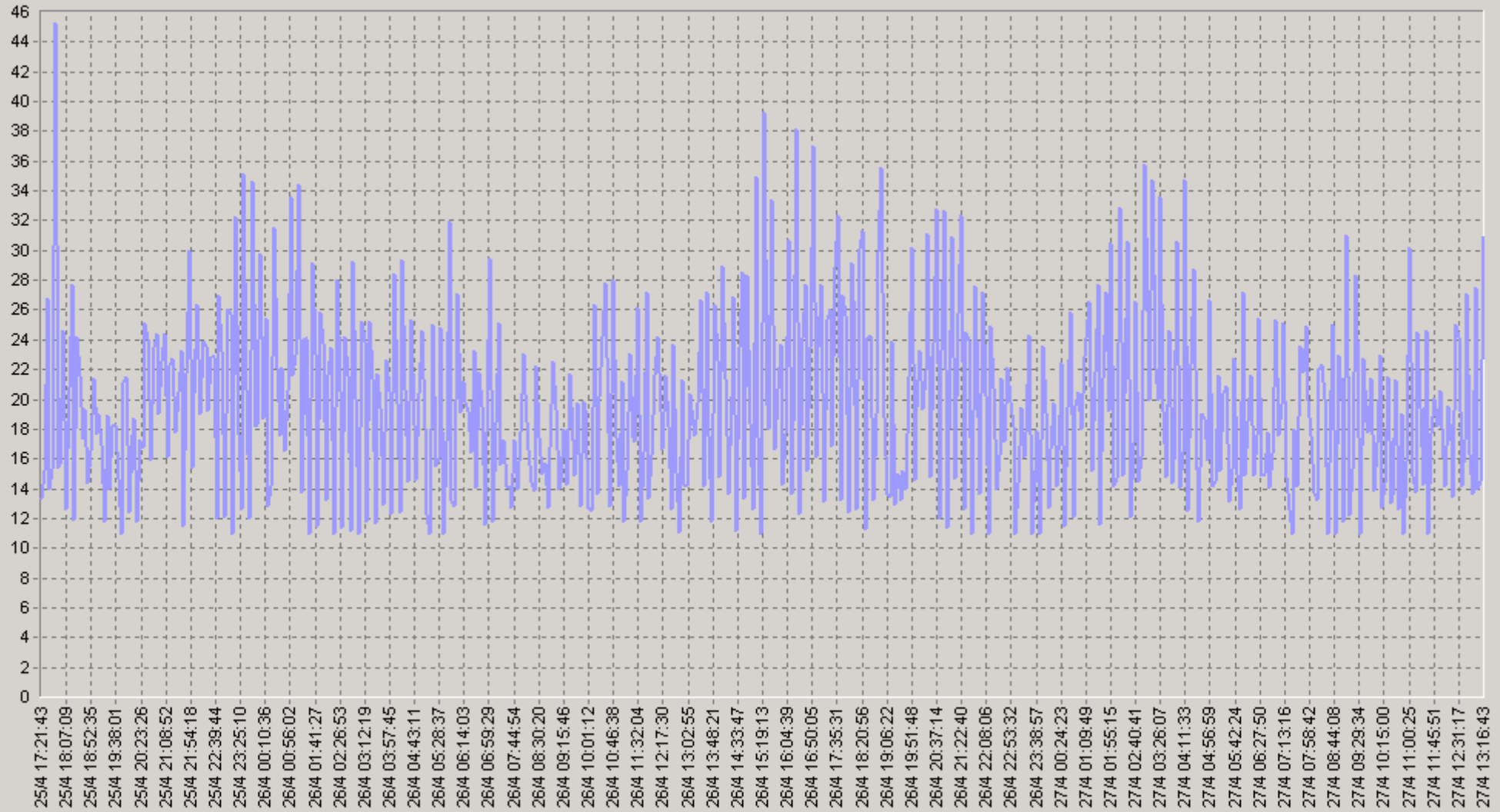
IP-

Cisco IP SLA

G.729

25.04.2008 17:20 - 27.04.2008 13:20

IP SLA G729 [10.0.3.252->62.61.7.2] ICMP



IP SLA G729 [10.0.3.252->62.61.7.2] ICMP(SLA-ON-SERVER3)

25.04.2008 17:20 - 27.04.2008 13:20

## 20 IP SLA G729 [10.0.3.252-&gt;62.61.7.2] ICMP

		75<	90<			75<	90<
00:00-00:20	18,3	23	34	06:00-06:20	19,7	23	32
00:20-00:40	19,9	26	34	06:20-06:40	17,9	19	39
00:40-01:00	21,8	27	38	06:40-07:00	18,9	26	34
01:00-01:20	22	27	40	07:00-07:20	20,2	32	37
01:20-01:40	20,9	29	39	07:20-07:40	14,7	15	23
01:40-02:00	22,3	26	39	07:40-08:00	18,9	26	36
02:00-02:20	18,2	23	33	08:00-08:20	17,7	19	29
02:20-02:40	20,7	29	38	08:20-08:40	18	23	29
02:40-03:00	22	38	39	08:40-09:00	18,1	23	32
03:00-03:20	21,9	32	36	09:00-09:20	17,2	19	29
03:20-03:40	21,1	29	38	09:20-09:40	19,4	26	32
03:40-04:00	20	24	39	09:40-10:00	17,7	19	29
04:00-04:20	18,8	24	33	10:00-10:20	16,8	19	32
04:20-04:40	21	29	38	10:20-10:40	19,7	26	32
04:40-05:00	19,9	26	37	10:40-11:00	16,8	19	36
05:00-05:20	16,4	19	29,5	11:00-11:20	18,9	24	35
05:20-05:40	17	19	29	11:20-11:40	17,7	19	37
05:40-06:00	19	19	38	11:40-12:00	19,2	26	33

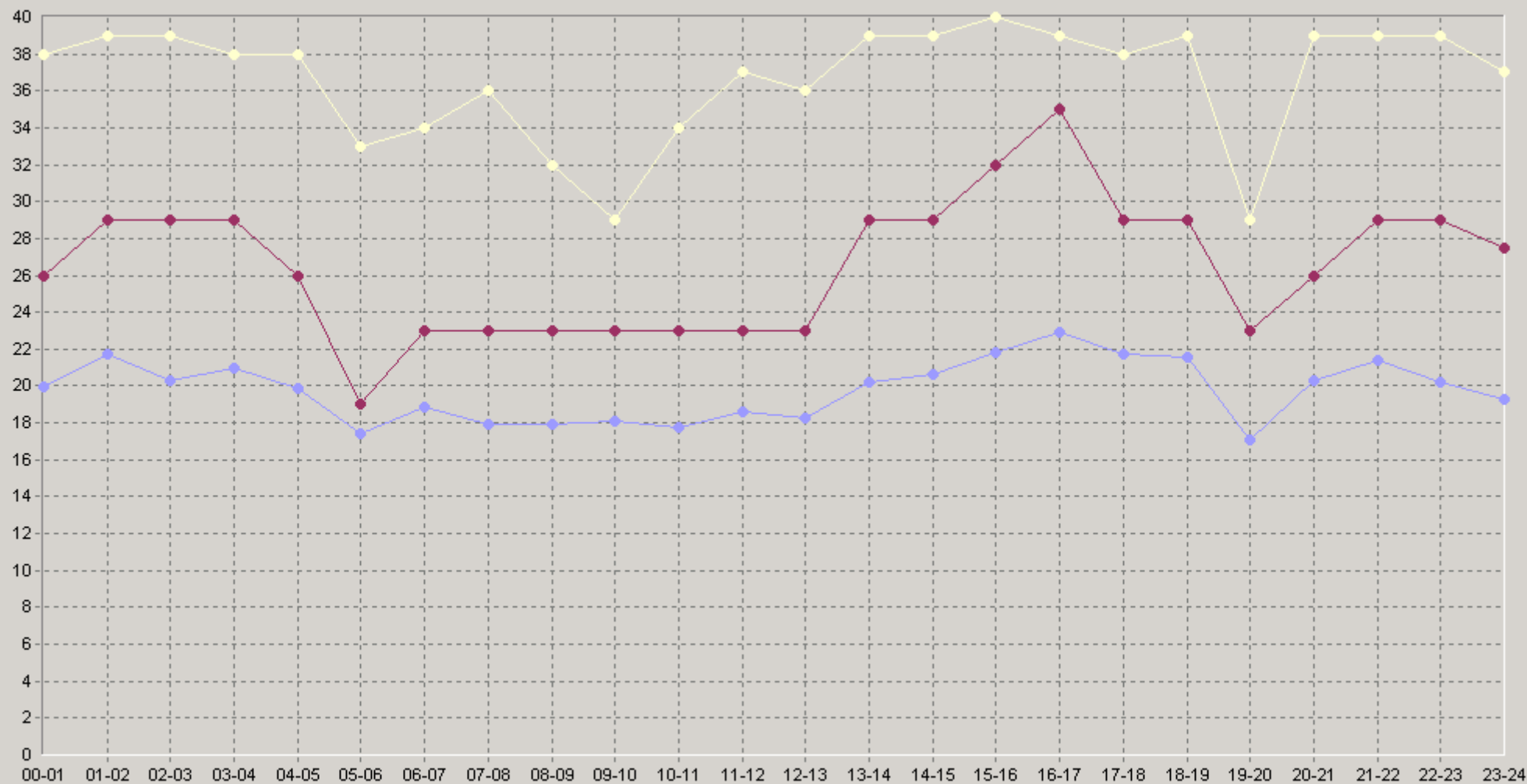
25.04.2008 17:20 - 27.04.2008 13:20

## 20 IP SLA G729 [10.0.3.252-&gt;62.61.7.2] ICMP

		75<	90<			75<	90<
12:00-12:20	18,7	23	36	18:00-18:20	23,2	35	39
12:20-12:40	19,1	26	39	18:20-18:40	20,7	29	40
12:40-13:00	17,1	19	30	18:40-19:00	20,8	26	38
13:00-13:20	19,7	23	36	19:00-19:20	16,8	19	26
13:20-13:40	22	37	39	19:20-19:40	15,8	19	23
13:40-14:00	19,6	33	39	19:40-20:00	18,6	26	32
14:00-14:20	19,7	26	35	20:00-20:20	18	23	29
14:20-14:40	20,5	26	39	20:20-20:40	23	29	38
14:40-15:00	21,9	30,5	35	20:40-21:00	20	26	39
15:00-15:20	19	26	39	21:00-21:20	22,9	29	38
15:20-15:40	27,7	40	40	21:20-21:40	21,9	29	38
15:40-16:00	18,7	26	29	21:40-22:00	19,4	27	39
16:00-16:20	20,2	26	38	22:00-22:20	22,1	33	38
16:20-16:40	25,6	38	40	22:20-22:40	19,6	23	39
16:40-17:00	23	35	39	22:40-23:00	18,9	26	36
17:00-17:20	22,5	29	37	23:00-23:20	19,2	26	32
17:20-17:40	21,8	34	38	23:20-23:40	19,1	23	39
17:40-18:00	21,2	27	38	23:40-00:00	19,6	29	37

25.04.2008 17:20 - 27.04.2008 13:20

## 60 IP SLA G729 [10.0.3.252-&gt;62.61.7.2] ICPIF



◆ [BaseLine Avg] IP SLA G729 [10.0.3.252->62.61.7.2] ICPIF(60)(SLA-ON-SERVER3)  
 ◆ [BaseLine Percnt90 (<=)] IP SLA G729 [10.0.3.252->62.61.7.2] ICPIF(60)(SLA-ON-SERVER3)

◆ [BaseLine Percnt75 (<=)] IP SLA G729 [10.0.3.252->62.61.7.2] ICPIF(60)(SLA-ON-SERVER3)



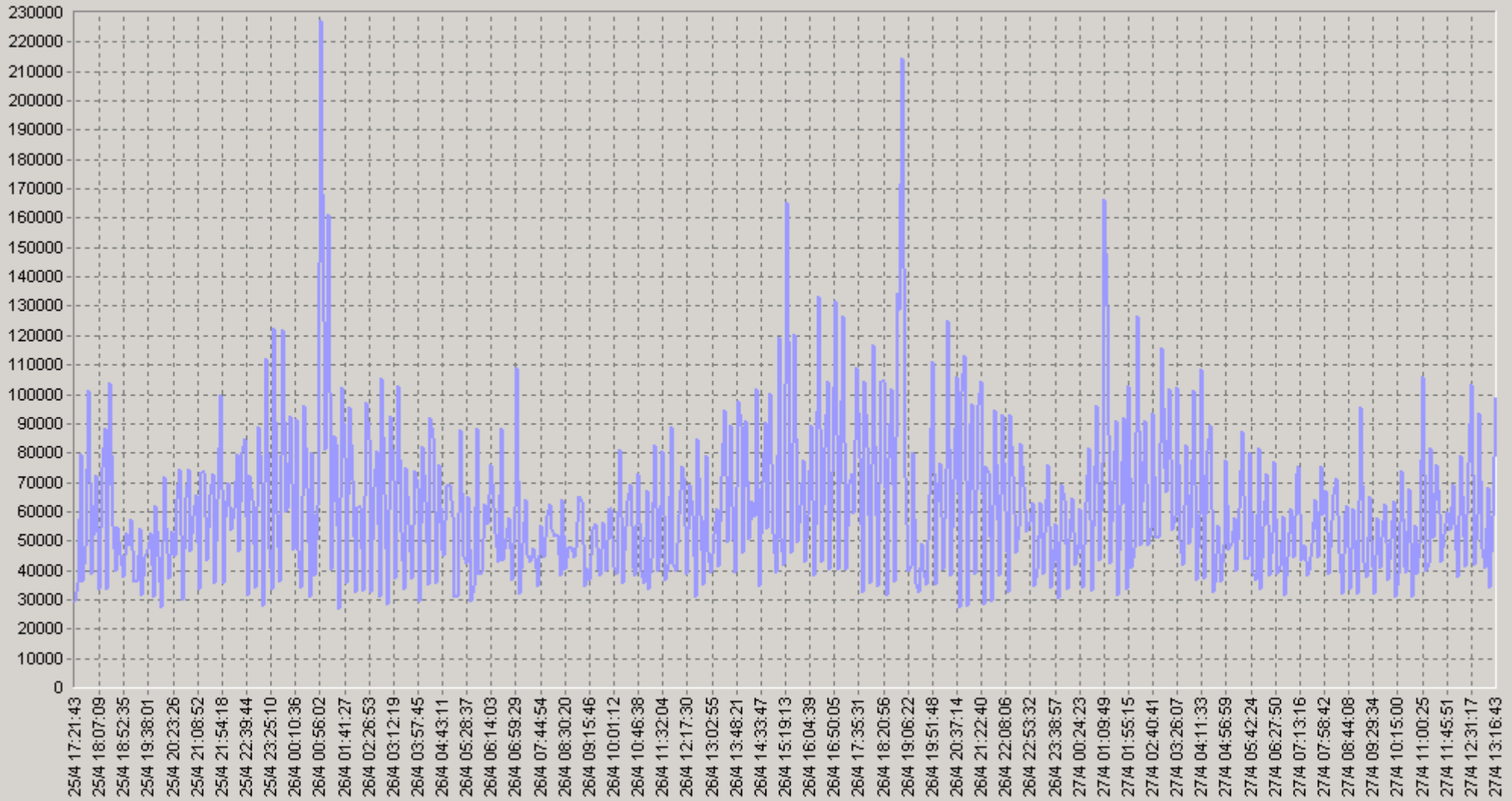
IP-

Cisco IP SLA

G.729

25.04.2008 17:20 - 27.04.2008 13:20

IP SLA G729 [10.0.3.252->62.61.7.2] Delay (usec)



IP SLA G729 [10.0.3.252->62.61.7.2] Delay (usec)(SLA-ON-SERVER3)

25.04.2008 17:20 - 27.04.2008 13:20

## 20: IP SLA G729 [10.0.3.252-&gt;62.61.7.2] Delay (usec)

		75<	90<			75<	90<
00:00-00:20	57 369	75 854	103 071	06:00-06:20	58 626	69 300	85 795
00:20-00:40	55 416	67 460	114 369	06:20-06:40	53 960	58 131	110 719
00:40-01:00	89 433	93 478	165 662	06:40-07:00	49 814	67 455	78 528
01:00-01:20	96 191	116 568	159 629	07:00-07:20	61 464	87 395	106 686
01:20-01:40	68 253	103 205	111 030	07:20-07:40	44 293	53 302	67 163
01:40-02:00	69 484	87 663	127 662	07:40-08:00	54 039	71 052	80 036
02:00-02:20	56 130	68 216	82 907	08:00-08:20	56 268	69 947	94 191
02:20-02:40	68 439	89 042	110 400	08:20-08:40	50 470	59 378	83 065
02:40-03:00	73 855	118 773	138 906	08:40-09:00	49 569	65 933	83 885
03:00-03:20	66 826	93 989	117 969	09:00-09:20	48 700	56 309	78 410
03:20-03:40	64 046	83 877	111 581	09:20-09:40	49 385	64 940	78 725
03:40-04:00	65 210	88 787	117 337	09:40-10:00	50 739	65 467	89 149
04:00-04:20	56 171	71 917	100 731	10:00-10:20	47 847	60 300	83 731
04:20-04:40	65 789	97 467	123 012	10:20-10:40	54 937	63 038	91 967
04:40-05:00	56 038	66 675	102 883	10:40-11:00	47 087	51 825	80 162
05:00-05:20	49 287	55 707	90 232	11:00-11:20	60 100	81 041	117 107
05:20-05:40	52 274	55 409	92 549	11:20-11:40	53 798	61 820	102 950
05:40-06:00	55 086	62 674	111 381	11:40-12:00	57 857	73 520	100 431

25.04.2008 17:20 - 27.04.2008 13:20

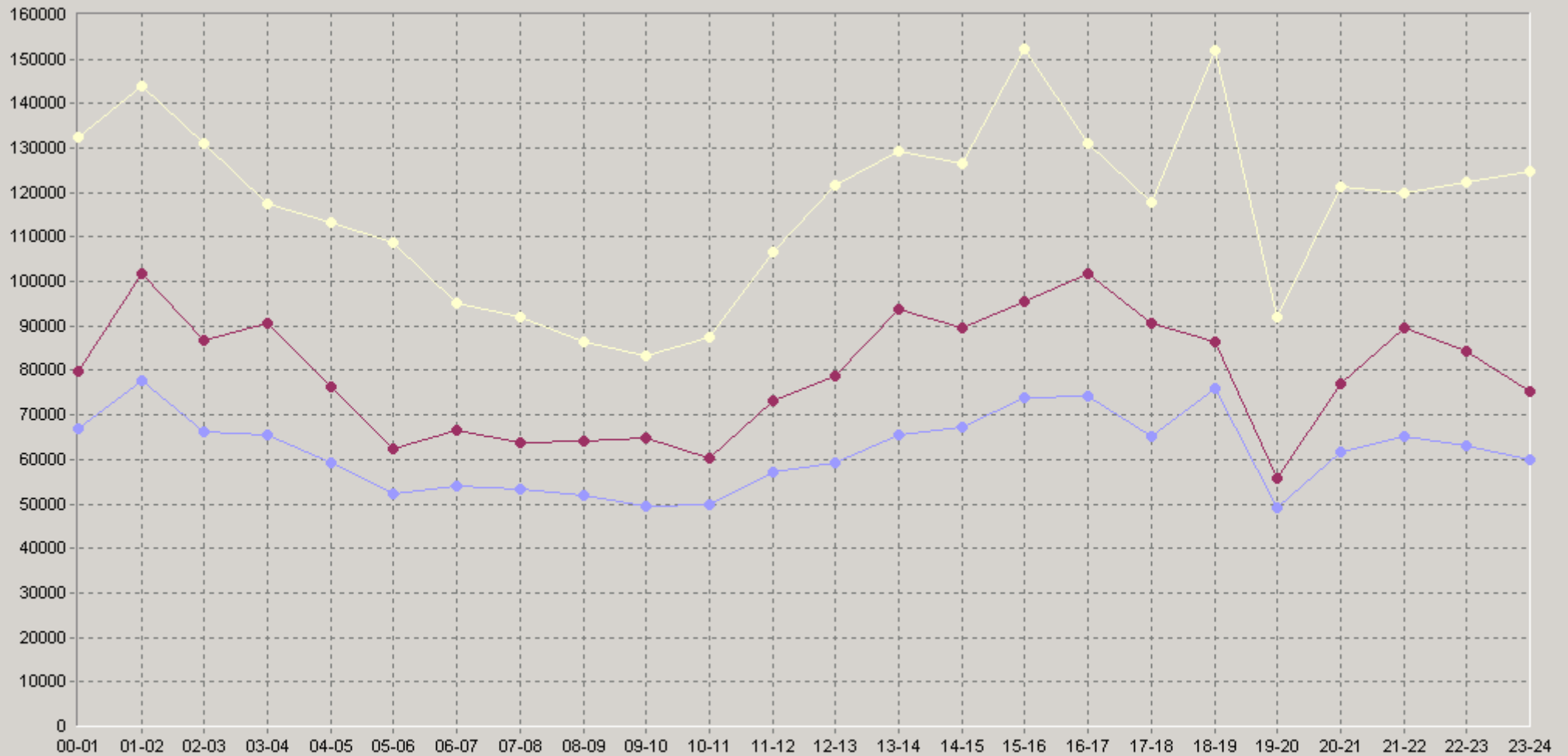
## 20 IP SLA G729 [10.0.3.252-&gt;62.61.7.2] Delay (usec)

		75<	90<			75<	90<
12:00-12:20	56 958	78 319	92 506	18:00-18:20	76 731	104 022	129 901
12:20-12:40	63 397	78 692	131 627	18:20-18:40	67 853	84 200	157 482
12:40-13:00	57 661	72 456	118 511	18:40-19:00	84 087	76 072	183 471
13:00-13:20	56 943	66 946	97 802	19:00-19:20	50 772	53 143	94 227
13:20-13:40	76 526	120 589	135 621	19:20-19:40	42 237	51 621	65 167
13:40-14:00	71 852	115 903	139 663	19:40-20:00	53 954	60 467	106 115
14:00-14:20	62 814	81 849	117 243	20:00-20:20	55 969	67 392	100 372
14:20-14:40	66 592	83 576	107 602	20:20-20:40	69 301	79 758	124 211
14:40-15:00	73 435	103 500	126 470	20:40-21:00	60 168	63 284	126 776
15:00-15:20	63 095	78 294	131 585	21:00-21:20	70 813	96 429	117 785
15:20-15:40	101 062	153 060	170 739	21:20-21:40	66 169	84 176	115 022
15:40-16:00	57 421	76 553	80 979	21:40-22:00	58 521	88 055	119 805
16:00-16:20	61 002	89 258	113 955	22:00-22:20	66 936	91 967	122 286
16:20-16:40	90 273	124 365	164 628	22:20-22:40	66 642	95 540	122 636
16:40-17:00	71 432	101 722	120 620	22:40-23:00	55 555	62 448	102 659
17:00-17:20	76 562	94 635	106 609	23:00-23:20	57 918	66 315	99 907
17:20-17:40	63 268	90 726	114 462	23:20-23:40	58 405	65 129	123 625
17:40-18:00	61 013	88 032	117 826	23:40-00:00	63 190	76 521	128 667



25.04.2008 17:20 - 27.04.2008 13:20

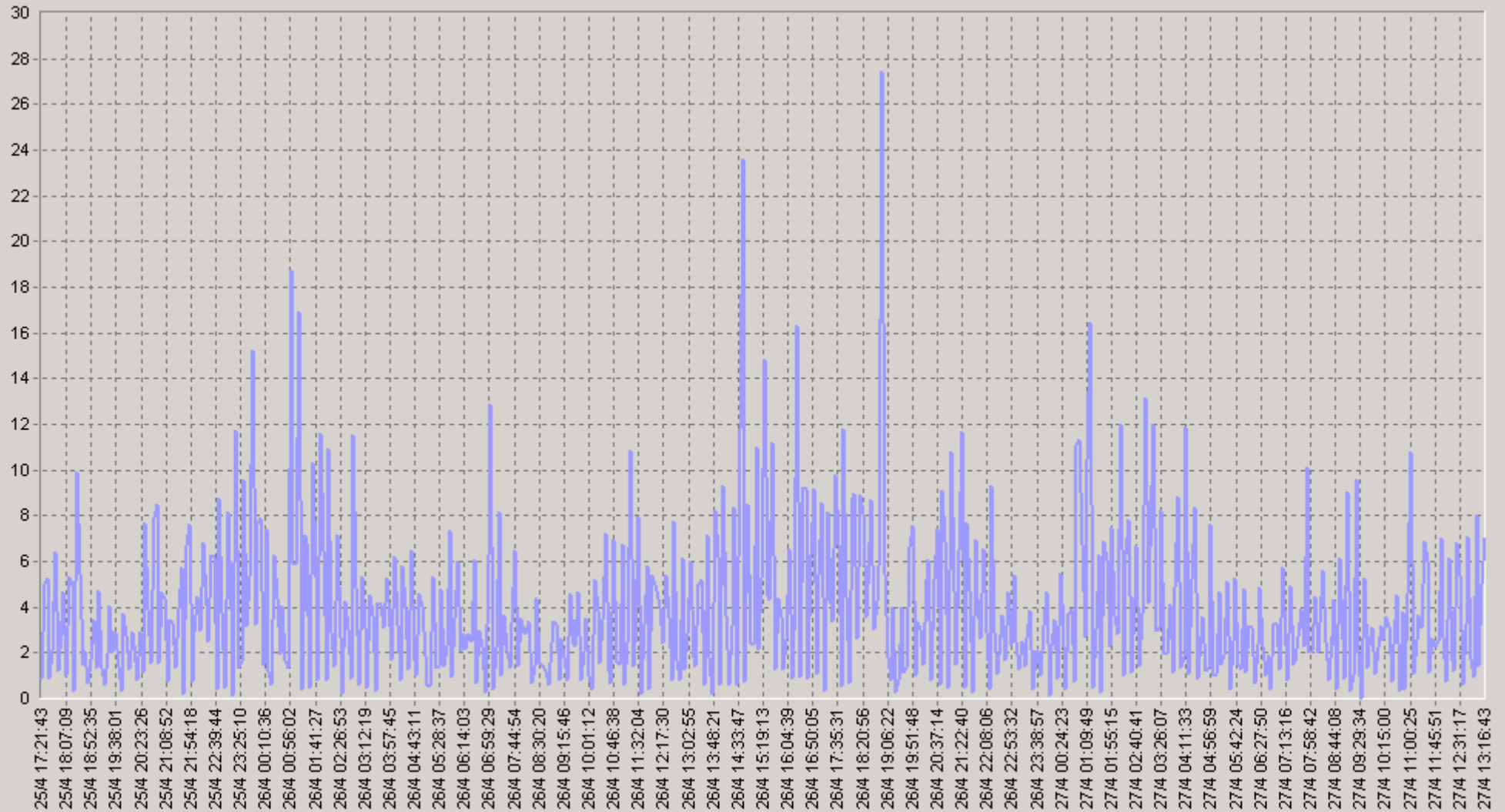
## 60 IP SLA G729 [10.0.3.252-&gt;62.61.7.2] Delay (usec)



◆ [BaseLine Avg] IP SLA G729 [10.0.3.252->62.61.7.2] Delay (usec)(60)(SLA-ON-SERVER3)  
 ◆ [BaseLine Percnt75 (<=)] IP SLA G729 [10.0.3.252->62.61.7.2] Delay (usec)(60)(SLA-ON-SERVER3)  
 ◆ [BaseLine Percnt90 (<=)] IP SLA G729 [10.0.3.252->62.61.7.2] Delay (usec)(60)(SLA-ON-SERVER3)

25.04.2008 17:20 - 27.04.2008 13:20

## IP SLA G729 [10.0.3.252-&gt;62.61.7.2] Packet Loss (%)



— IP SLA G729 [10.0.3.252-&gt;62.61.7.2] Packet Loss (%) (SLA-ON-SERVER3)

25.04.2008 17:20 - 27.04.2008 13:20

## 20 IP SLA G729 [10.0.3.252-&gt;62.61.7.2] Packet Loss (%)

		75<	90<			75<	90<
00:00-00:20	2,98	3	7	06:00-06:20	2,6	3	7
00:20-00:40	3,55	6	9	06:20-06:40	2,78	2	9
00:40-01:00	6,66	5	22	06:40-07:00	2,55	3	7
01:00-01:20	7,21	11	26	07:00-07:20	4,45	5	12
01:20-01:40	4,55	6	13	07:20-07:40	2,48	3	9
01:40-02:00	5,6	8	13	07:40-08:00	3,98	4	10
02:00-02:20	4,65	6	17	08:00-08:20	2,75	3	9
02:20-02:40	4,13	6	10	08:20-08:40	2,55	3	6
02:40-03:00	5,63	10	15	08:40-09:00	2,48	3	6
03:00-03:20	4,43	6	11	09:00-09:20	2,5	2	8
03:20-03:40	3,49	7	9	09:20-09:40	3,4	4	11
03:40-04:00	4,28	5	14	09:40-10:00	2,35	3	6
04:00-04:20	3,5	5	7	10:00-10:20	2,75	4	9
04:20-04:40	4,23	7	11	10:20-10:40	2,98	3	5
04:40-05:00	3,13	4	7	10:40-11:00	2,73	4	9
05:00-05:20	2,01	2	4	11:00-11:20	4,58	6	15
05:20-05:40	2,38	3	6	11:20-11:40	3,63	5	9
05:40-06:00	3,31	4	10	11:40-12:00	3,8	5	10

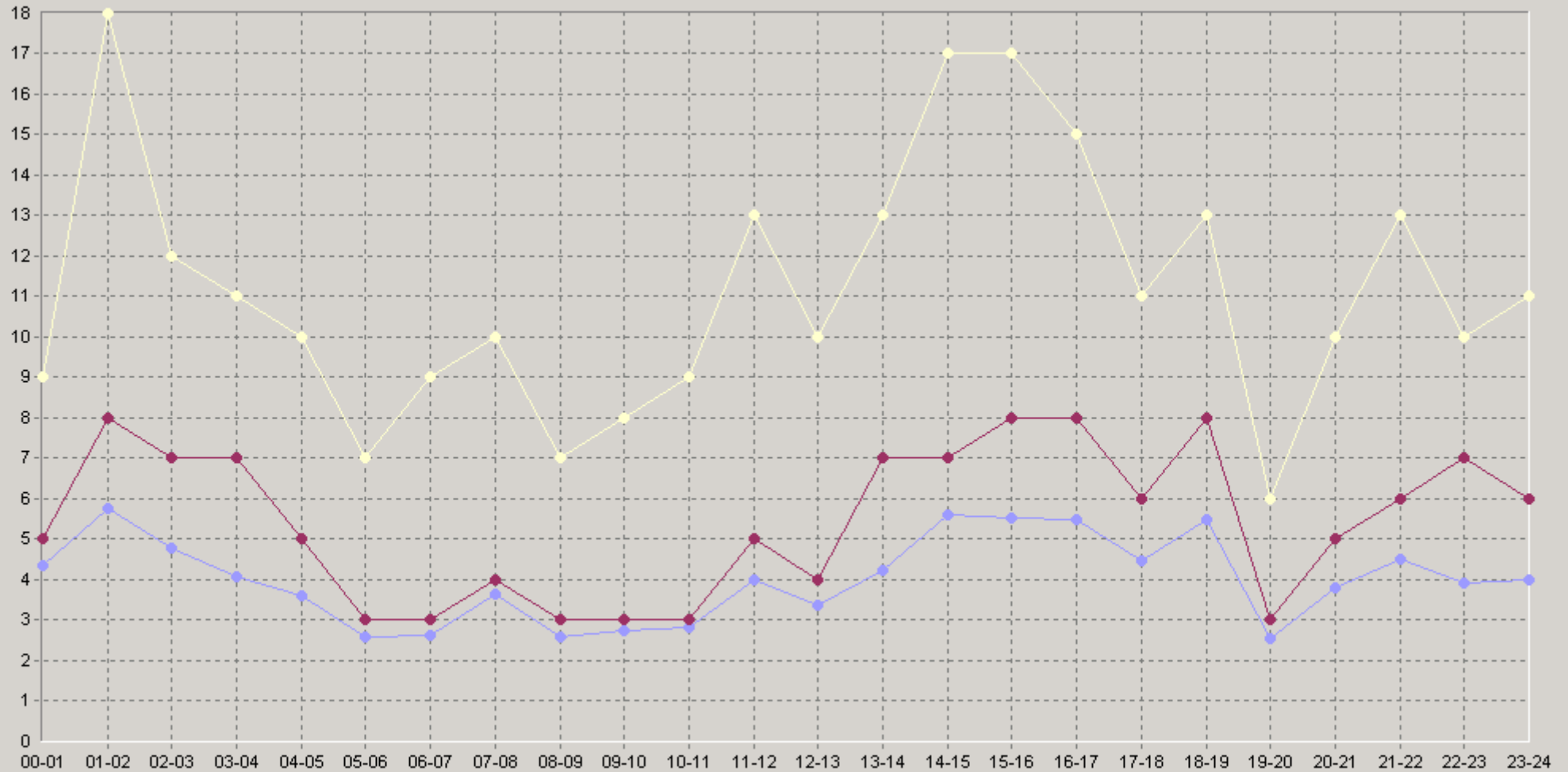
25.04.2008 17:20 - 27.04.2008 13:20

## 20 IP SLA G729 [10.0.3.252-&gt;62.61.7.2] Packet Loss (%)

		75<	90<			75<	90<
12:00-12:20	3,23	4	6	18:00-18:20	5,63	9	13
12:20-12:40	3,95	5	14	18:20-18:40	5,25	6	15
12:40-13:00	2,93	3	7	18:40-19:00	5,61	6	10
13:00-13:20	4,15	7	11	19:00-19:20	2,41	3	5
13:20-13:40	4,5	8	11	19:20-19:40	2,15	2	5
13:40-14:00	4,1	6	13	19:40-20:00	3,08	5	8
14:00-14:20	3,55	5	9	20:00-20:20	2,55	3	5
14:20-14:40	6,05	7	19	20:20-20:40	4,34	5	10
14:40-15:00	7,56	7	17	20:40-21:00	4,5	5	14
15:00-15:20	5,25	8	17	21:00-21:20	5,1	6	13
15:20-15:40	8,75	17	19	21:20-21:40	4,73	6	11
15:40-16:00	2,55	4	5	21:40-22:00	3,68	6	12
16:00-16:20	3,25	4	9	22:00-22:20	4,78	8	10
16:20-16:40	8,9	15	22	22:20-22:40	3,45	4	11
16:40-17:00	4,35	7	10	22:40-23:00	3,54	4	9
17:00-17:20	5,65	8	13	23:00-23:20	3,49	5	8
17:20-17:40	4,62	7	14	23:20-23:40	3,08	5	10
17:40-18:00	3,73	5	9	23:40-00:00	5,38	7	13

25.04.2008 17:20 - 27.04.2008 13:20

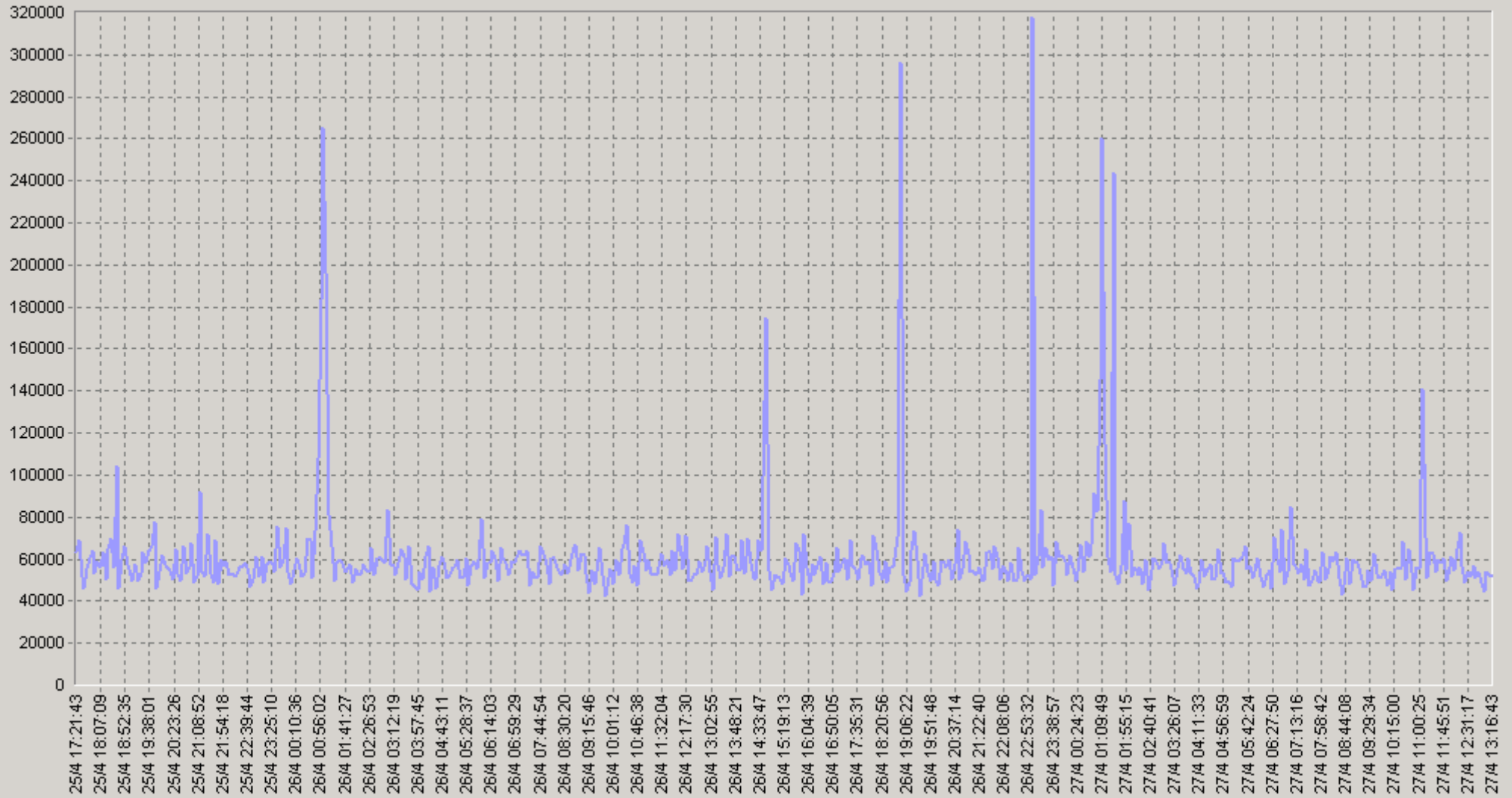
## 60 IP SLA G729 [10.0.3.252-&gt;62.61.7.2] Packet Loss (%)



◆ [BaseLine Avg] IP SLA G729 [10.0.3.252->62.61.7.2] Packet Loss (%) (60)(SLA-ON-SERVER3)  
 ◆ [BaseLine Percnt75 (<=)] IP SLA G729 [10.0.3.252->62.61.7.2] Packet Loss (%) (60)(SLA-ON-SERVER3)  
 ◆ [BaseLine Percnt90 (<=)] IP SLA G729 [10.0.3.252->62.61.7.2] Packet Loss (%) (60)(SLA-ON-SERVER3)

25.04.2008 17:20 - 27.04.2008 13:20

## IP SLA G729 [10.0.3.252-&gt;62.61.7.2] Jitter (usec)



IP SLA G729 [10.0.3.252-&gt;62.61.7.2] Jitter (usec)(SLA-ON-SERVER3)

25.04.2008 17:20 - 27.04.2008 13:20

## 20. IP SLA G729 [10.0.3.252-&gt;62.61.7.2] Jitter (usec)

		75<	90<			75<	90<
00:00-00:20	56 314	59 143	76 893	06:00-06:20	55 596	61 038	71 500
00:20-00:40	58 697	64 647	75 733	06:20-06:40	58 264	67 200	82 083
00:40-01:00	93 100	100 556	153 588	06:40-07:00	57 529	63 810	74 333
01:00-01:20	142 006	154 000	272 600	07:00-07:20	62 785	67 500	77 400
01:20-01:40	75 414	64 500	70 368	07:20-07:40	54 254	63 000	68 857
01:40-02:00	57 764	60 667	71 000	07:40-08:00	55 317	58 565	67 900
02:00-02:20	56 574	58 320	72 500	08:00-08:20	56 844	63 944	75 667
02:20-02:40	54 562	61 500	69 125	08:20-08:40	53 892	64 923	67 786
02:40-03:00	58 292	68 200	76 063	08:40-09:00	58 219	67 577	71 077
03:00-03:20	61 214	65 167	76 867	09:00-09:20	54 438	54 500	75 100
03:20-03:40	56 682	61 467	74 762	09:20-09:40	55 330	61 667	71 333
03:40-04:00	53 738	61 222	70 000	09:40-10:00	51 485	55 760	63 182
04:00-04:20	54 555	63 000	77 313	10:00-10:20	53 558	55 185	72 818
04:20-04:40	52 323	59 500	67 560	10:20-10:40	59 348	62 208	84 059
04:40-05:00	55 818	63 538	72 640	10:40-11:00	57 460	63 938	86 700
05:00-05:20	53 344	58 200	73 833	11:00-11:20	67 403	62 407	76 375
05:20-05:40	57 859	63 320	71 391	11:20-11:40	58 783	64 643	85 286
05:40-06:00	59 125	62 421	71 000	11:40-12:00	56 592	66 364	76 889

25.04.2008 17:20 - 27.04.2008 13:20

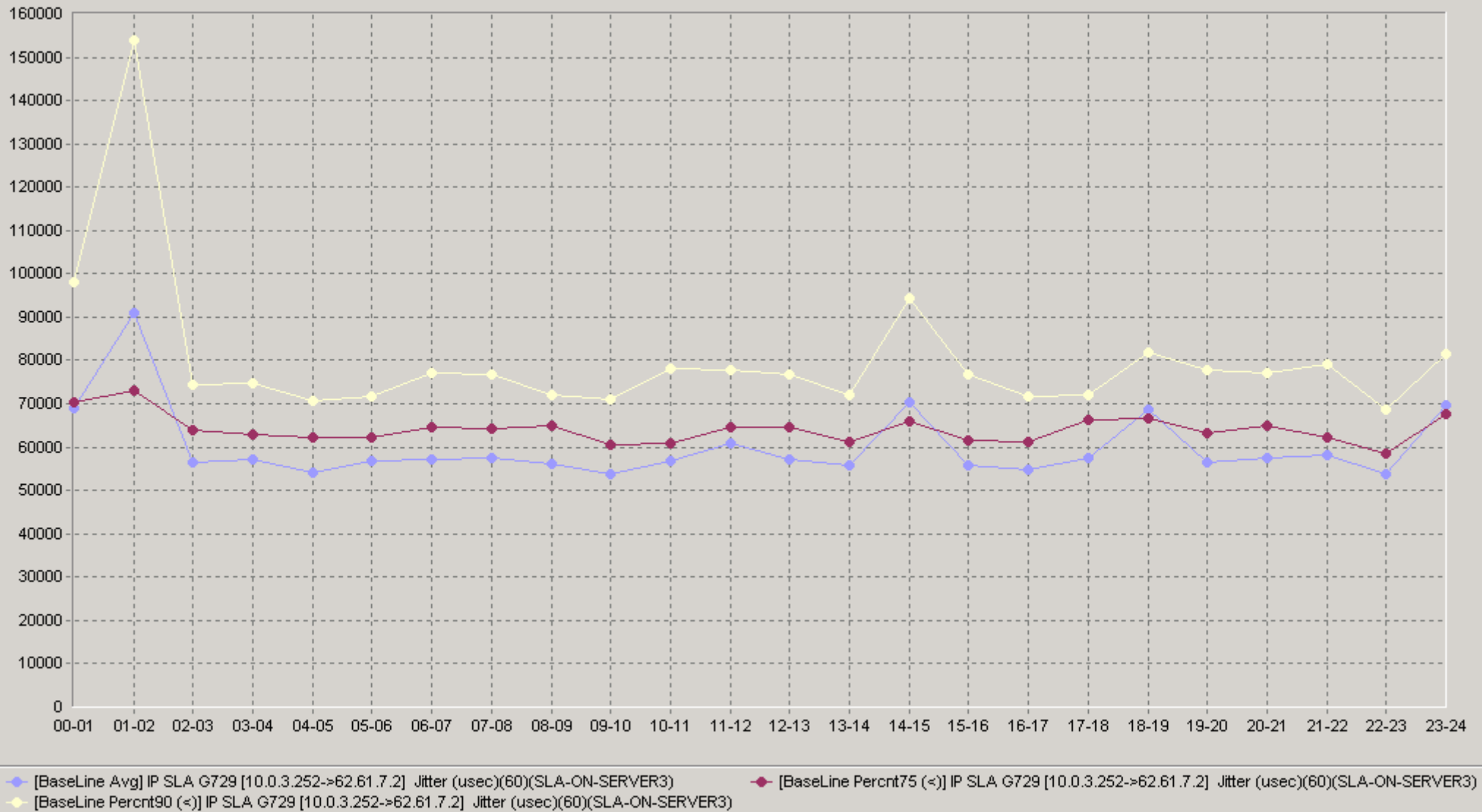
## 20. IP SLA G729 [10.0.3.252-&gt;62.61.7.2] Jitter (usec)

		75<	90<			75<	90<
12:00-12:20	64 156	72 250	87 773	18:00-18:20	58 397	66 138	74 500
12:20-12:40	51 964	58 217	64 680	18:20-18:40	63 494	68 867	82 214
12:40-13:00	55 880	60 480	76 667	18:40-19:00	85 127	65 909	84 838
13:00-13:20	53 902	60 296	66 929	19:00-19:20	52 442	61 500	65 050
13:20-13:40	57 727	60 806	72 000	19:20-19:40	58 380	65 278	83 417
13:40-14:00	57 931	61 833	73 148	19:40-20:00	58 474	63 231	83 333
14:00-14:20	62 495	66 000	81 067	20:00-20:20	55 242	65 077	72 714
14:20-14:40	58 448	62 786	81 692	20:20-20:40	55 095	62 095	65 645
14:40-15:00	94 136	61 769	201 850	20:40-21:00	61 647	66 500	98 182
15:00-15:20	50 853	56 000	63 536	21:00-21:20	58 626	60 588	79 870
15:20-15:40	55 513	61 484	73 379	21:20-21:40	55 523	56 630	68 632
15:40-16:00	61 567	60 000	109 111	21:40-22:00	60 554	67 222	79 000
16:00-16:20	53 804	60 200	70 188	22:00-22:20	52 919	58 706	67 000
16:20-16:40	56 003	61 406	69 926	22:20-22:40	56 361	61 516	71 167
16:40-17:00	54 280	56 447	71 778	22:40-23:00	52 167	56 154	63 929
17:00-17:20	55 423	66 167	70 667	23:00-23:20	91 114	72 222	95 923
17:20-17:40	57 308	62 846	72 750	23:20-23:40	60 772	67 633	79 917
17:40-18:00	58 992	67 667	72 083	23:40-00:00	60 279	65 563	77 000



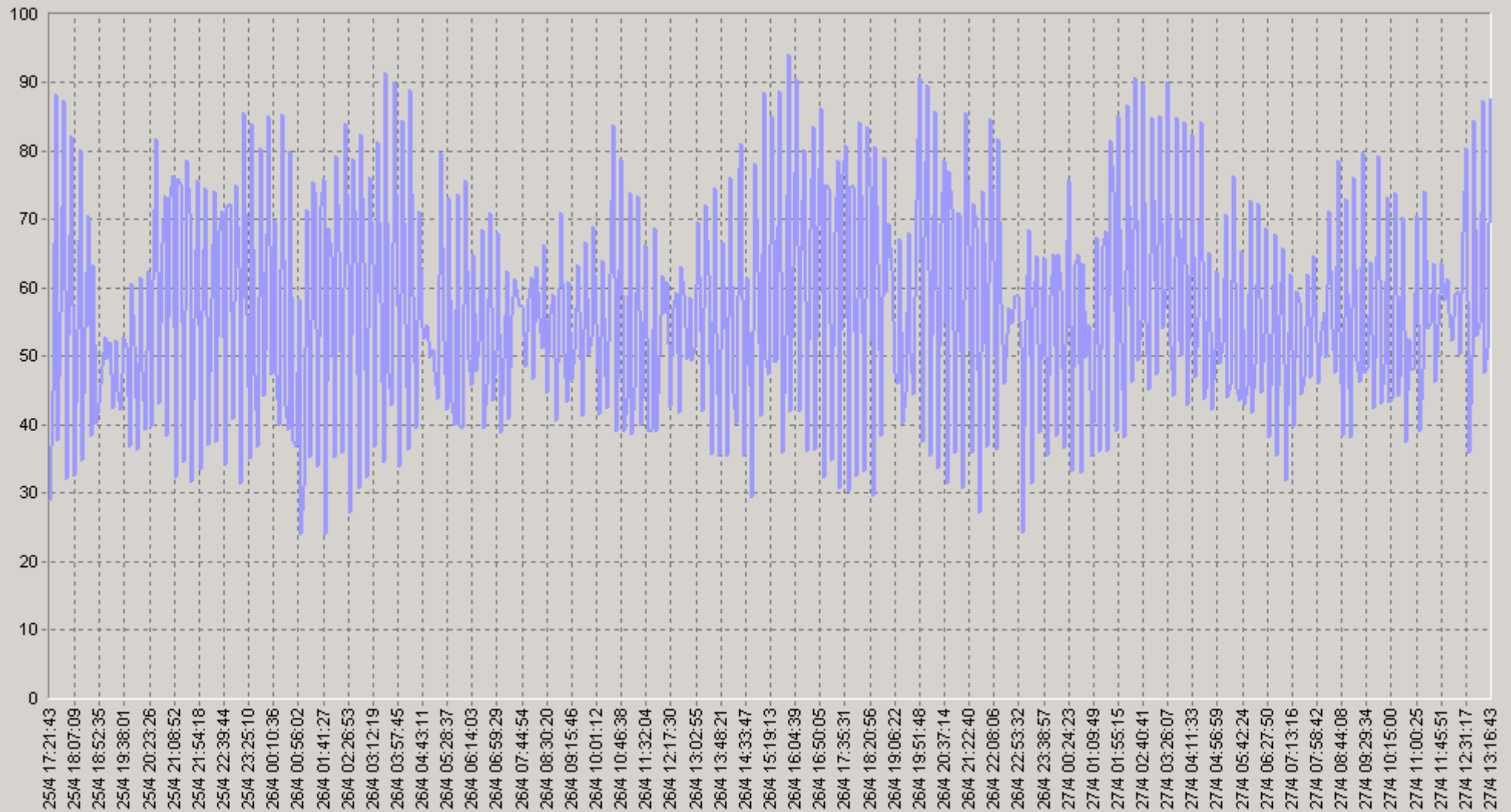
25.04.2008 17:20 - 27.04.2008 13:20

## 60. IP SLA G729 [10.0.3.252-&gt;62.61.7.2] Jitter (usec)



25.04.2008 17:20 - 27.04.2008 13:20

## IP SLA G729 [10.0.3.252-&gt;62.61.7.2] The Number of Round Trip Operations



IP SLA G729 [10.0.3.252-&gt;62.61.7.2] The Number of Round Trip Operations(SLA-ON-SERVER3)

25.04.2008 17:20 - 27.04.2008 13:20

## 20 IP SLA G729 [10.0.3.252-&gt;62.61.7.2] The Number of Round Trip Operations

		75>	90>			75>	90>
00:00-00:20	55,4	37	32	06:00-06:20	55,2	41	32
00:20-00:40	56,3	37	32	06:20-06:40	52,9	38	32
00:40-01:00	52,2	33	25	06:40-07:00	53,5	35	30
01:00-01:20	44,5	25	17	07:00-07:20	51	34	30
01:20-01:40	58,6	34	30	07:20-07:40	53,8	39	35
01:40-02:00	63,6	45	24	07:40-08:00	55,9	37	33
02:00-02:20	56,2	36	29	08:00-08:20	54,4	41	35
02:20-02:40	62,9	37	29	08:20-08:40	59,6	40	37
02:40-03:00	63,6	40	29	08:40-09:00	52,8	34	30
03:00-03:20	57,7	37	29	09:00-09:20	51,8	37	31
03:20-03:40	63,9	34	26	09:20-09:40	55,8	38	32
03:40-04:00	63,8	38	32	09:40-10:00	56,6	40	36
04:00-04:20	54,8	35	25	10:00-10:20	52,2	37	31
04:20-04:40	61,1	39	31	10:20-10:40	57,7	44	33
04:40-05:00	54,6	42	31	10:40-11:00	49,9	37	30
05:00-05:20	54,2	40	34	11:00-11:20	57,3	42	30
05:20-05:40	52,3	38	33	11:20-11:40	51	38	34
05:40-06:00	52,8	36	33	11:40-12:00	55,2	38	33

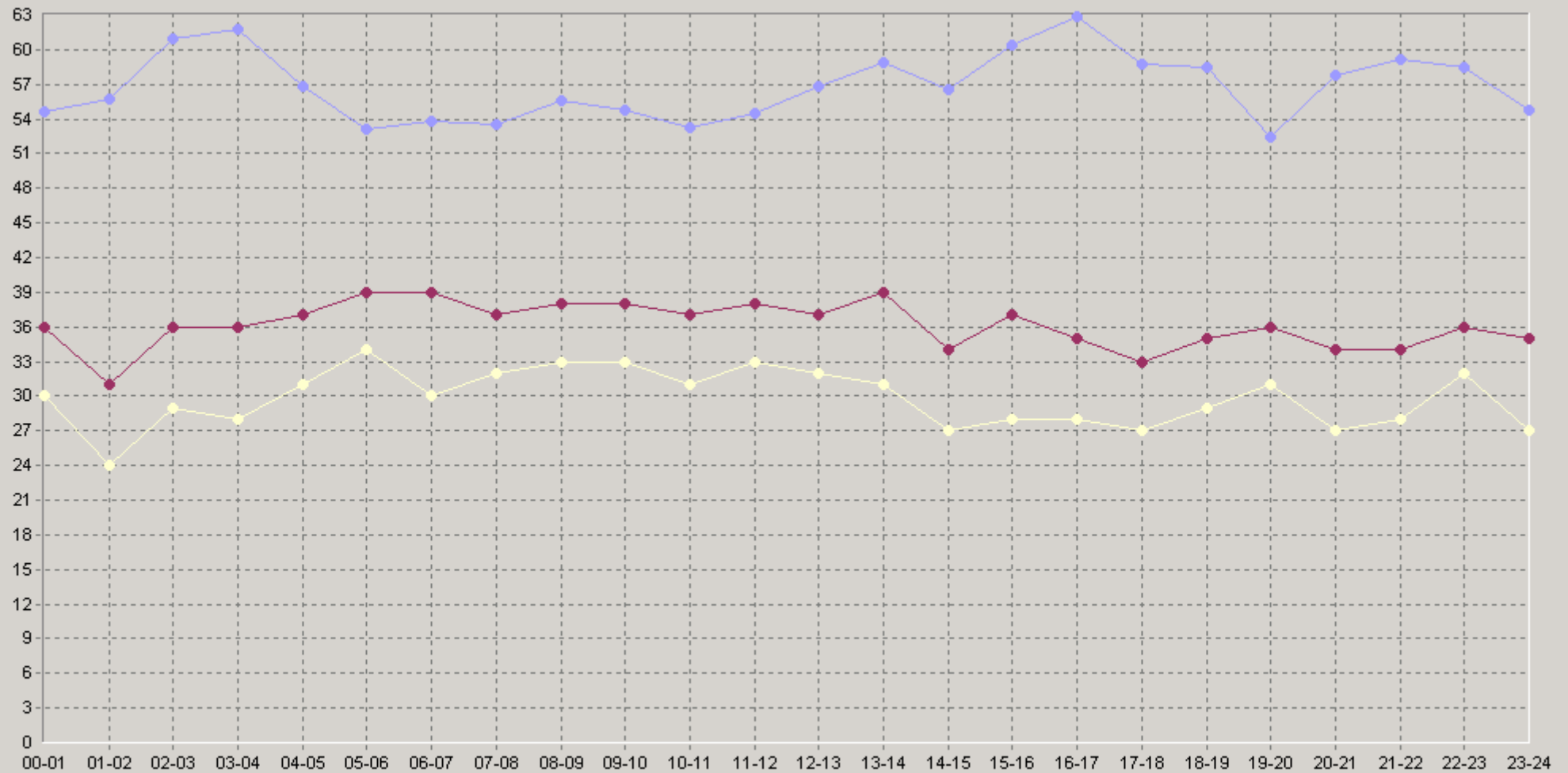
25.04.2008 17:20 - 27.04.2008 13:20

## 20 IP SLA G729 [10.0.3.252-&gt;62.61.7.2] The Number of Round Trip Operations

		75>	90>			75>	90>
12:00-12:20	55,3	37	32	18:00-18:20	65,1	38	31
12:20-12:40	57	39	33	18:20-18:40	56,4	33	30
12:40-13:00	58,3	37	30	18:40-19:00	53,5	37	27
13:00-13:20	61	40	36	19:00-19:20	52,3	41	33
13:20-13:40	61,2	40	30	19:20-19:40	50	37	31
13:40-14:00	52,4	35	31	19:40-20:00	55,3	36	31
14:00-14:20	49,2	33	27	20:00-20:20	56,5	36	30
14:20-14:40	64,1	41	32	20:20-20:40	63,1	40	27
14:40-15:00	56,2	34	16	20:40-21:00	54,2	34	27
15:00-15:20	57	37	29	21:00-21:20	65,7	40	31
15:20-15:40	68,1	45	30	21:20-21:40	62,1	39	33
15:40-16:00	56,1	32	24	21:40-22:00	49,8	28	24
16:00-16:20	65,6	38	30	22:00-22:20	63	35	32
16:20-16:40	67,1	50	30	22:20-22:40	57,1	39	31
16:40-17:00	55,8	29	25	22:40-23:00	55,3	36	33
17:00-17:20	63,5	35	32	23:00-23:20	53,8	32	24
17:20-17:40	59,1	32	27	23:20-23:40	54,9	35	29
17:40-18:00	55,9	32	26	23:40-00:00	55,3	40	27

25.04.2008 17:20 - 27.04.2008 13:20

## 60 IP SLA G729 [10.0.3.252-&gt;62.61.7.2] The Number of Round Trip Operations



◆ [BaseLine Avg] IP SLA G729 [10.0.3.252->62.61.7.2] The Number of Round Trip Operations(60)(SLA-ON-SERVER3)  
 ◆ [BaseLine Percnt75 (>=)] IP SLA G729 [10.0.3.252->62.61.7.2] The Number of Round Trip Operations(60)(SLA-ON-SERVER3)  
 ◆ [BaseLine Percnt90 (>=)] IP SLA G729 [10.0.3.252->62.61.7.2] The Number of Round Trip Operations(60)(SLA-ON-SERVER3)