

15.07.2008 13:00 - 16.07.2008 13:00



IP SLA **113**



IPSLA CALIBRATION.[10.0.3.252->62.61.7.3] SNMP Device Availability (%)	>=99 99%	<99 0%	<96 0%	<94 0%	<90 0,98%	1425		
IPSLA CALIBRATION.[10.0.3.252->62.61.7.3] Delay (usec)	<=100 000 41,7%	>100 000 58,2%	>400 000 0,07%	n/a	>1 000 000 0%	1407		
IPSLA CALIBRATION.[10.0.3.252->62.61.7.3] PacketLoss (%)	<=0,1 2,77%	n/a	n/a	n/a	>0,1 97,2%	1409		
IPSLA CALIBRATION.[10.0.3.252->62.61.7.3] Jitter (usec)	<=50 000 0,78%	n/a	n/a	n/a	>50 000 99,2%	1409		
IPSLA CALIBRATION.[10.0.3.252->62.61.7.3] The Number of Round Trip Operations	>=95 97,9%	<95 1,28%	<85 0,5%	<70 0,35%	<50 0%	1409		
IP- ()	0,21%	-->	0,21%	-->	0,21%	-->	0,21%	1425

(2)

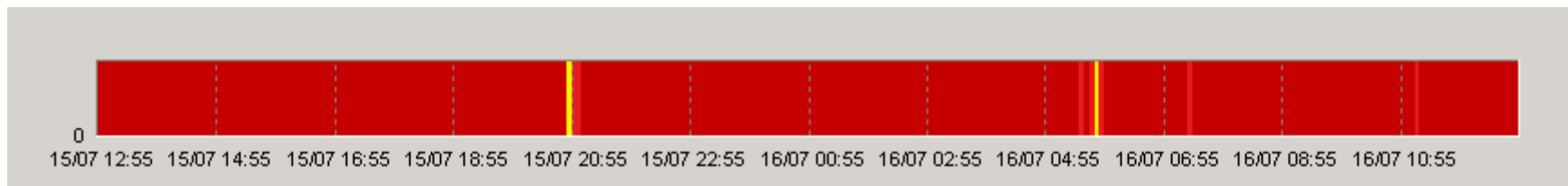
ProLAN

ProLAN.

PROLAN,

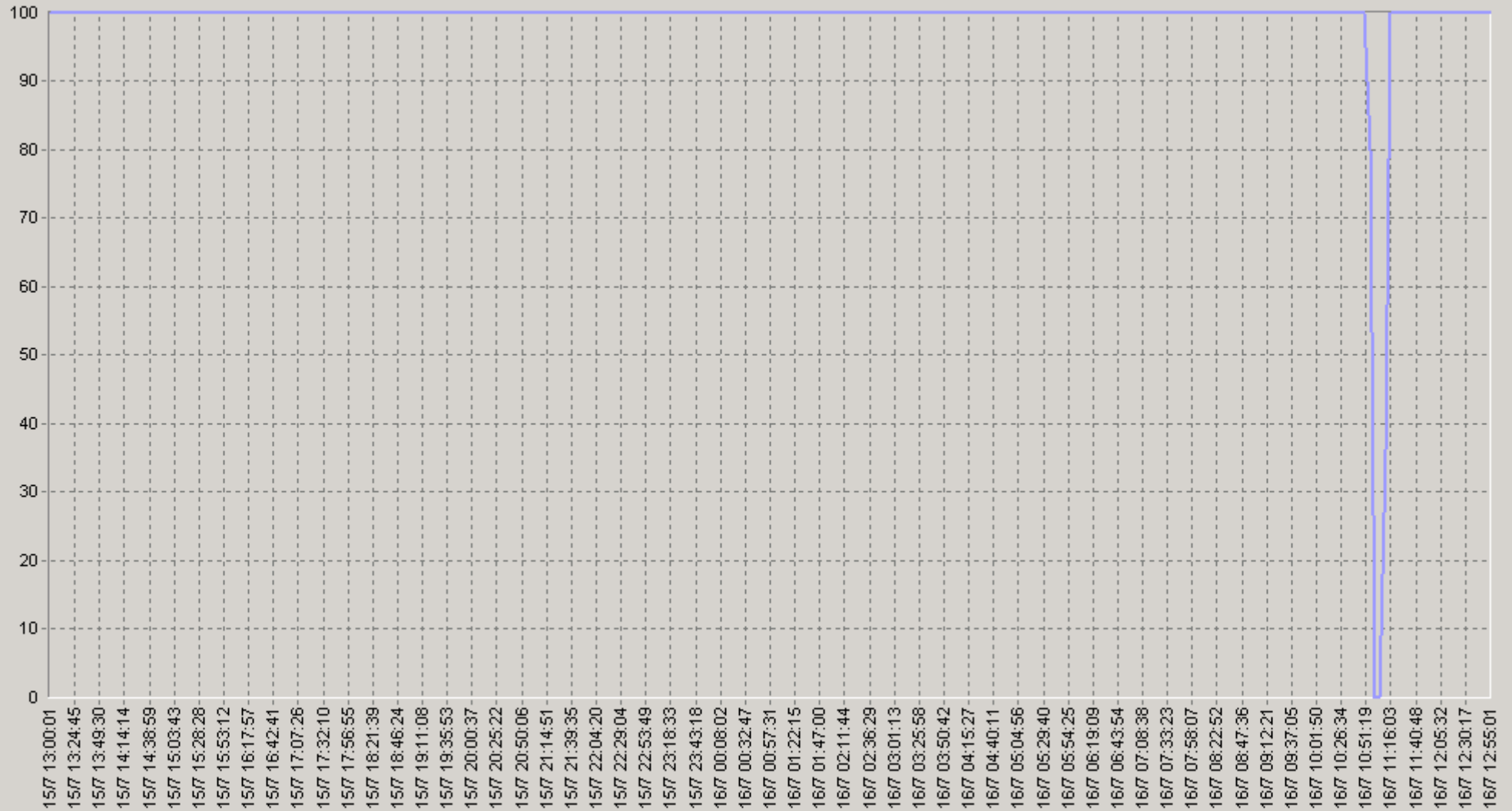
PROLAN
PARTNER@PROLAN.RU

(« »)



15.07.2008 13:00 - 16.07.2008 13:00

IPSLA CALIBRATION.[10.0.3.252->62.61.7.3] SNMP Device Availability (%)



— IPSLA CALIBRATION.[10.0.3.252->62.61.7.3] SNMP Device Availability (%)(SLA-ON-SERVER1)

15.07.2008 13:00 - 16.07.2008 13:00

20 IPSLA CALIBRATION.[10.0.3.252->62.61.7.3] SNMP Device Availability (%)

		75>	90>			75>	90>
00:00-00:20	100	100	100	06:00-06:20	100	100	100
00:20-00:40	100	100	100	06:20-06:40	100	100	100
00:40-01:00	100	100	100	06:40-07:00	100	100	100
01:00-01:20	100	100	100	07:00-07:20	100	100	100
01:20-01:40	100	100	100	07:20-07:40	100	100	100
01:40-02:00	100	100	100	07:40-08:00	100	100	100
02:00-02:20	100	100	100	08:00-08:20	100	100	100
02:20-02:40	100	100	100	08:20-08:40	100	100	100
02:40-03:00	100	100	100	08:40-09:00	100	100	100
03:00-03:20	100	100	100	09:00-09:20	100	100	100
03:20-03:40	100	100	100	09:20-09:40	100	100	100
03:40-04:00	100	100	100	09:40-10:00	100	100	100
04:00-04:20	100	100	100	10:00-10:20	100	100	100
04:20-04:40	100	100	100	10:20-10:40	100	100	100
04:40-05:00	100	100	100	10:40-11:00	85	100	0
05:00-05:20	100	100	100	11:00-11:20	42,1	0	0
05:20-05:40	100	100	100	11:20-11:40	100	100	100
05:40-06:00	100	100	100	11:40-12:00	100	100	100

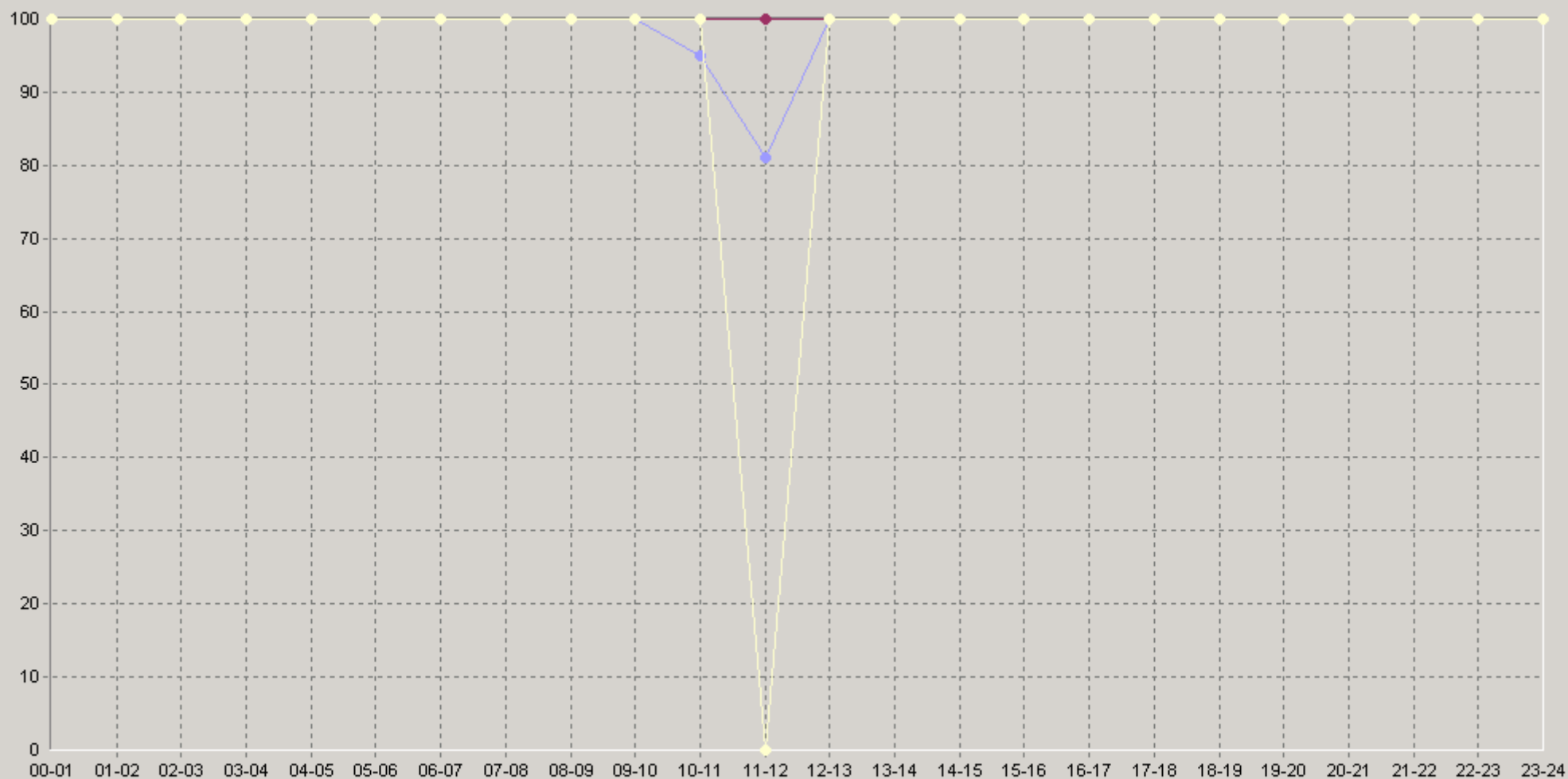
15.07.2008 13:00 - 16.07.2008 13:00

20 IPSLA CALIBRATION.[10.0.3.252->62.61.7.3] SNMP Device Availability (%)

		75>	90>			75>	90>
12:00-12:20	100	100	100	18:00-18:20	100	100	100
12:20-12:40	100	100	100	18:20-18:40	100	100	100
12:40-13:00	100	100	100	18:40-19:00	100	100	100
13:00-13:20	100	100	100	19:00-19:20	100	100	100
13:20-13:40	100	100	100	19:20-19:40	100	100	100
13:40-14:00	100	100	100	19:40-20:00	100	100	100
14:00-14:20	100	100	100	20:00-20:20	100	100	100
14:20-14:40	100	100	100	20:20-20:40	100	100	100
14:40-15:00	100	100	100	20:40-21:00	100	100	100
15:00-15:20	100	100	100	21:00-21:20	100	100	100
15:20-15:40	100	100	100	21:20-21:40	100	100	100
15:40-16:00	100	100	100	21:40-22:00	100	100	100
16:00-16:20	100	100	100	22:00-22:20	100	100	100
16:20-16:40	100	100	100	22:20-22:40	100	100	100
16:40-17:00	100	100	100	22:40-23:00	100	100	100
17:00-17:20	100	100	100	23:00-23:20	100	100	100
17:20-17:40	100	100	100	23:20-23:40	100	100	100
17:40-18:00	100	100	100	23:40-00:00	100	100	100

15.07.2008 13:00 - 16.07.2008 13:00

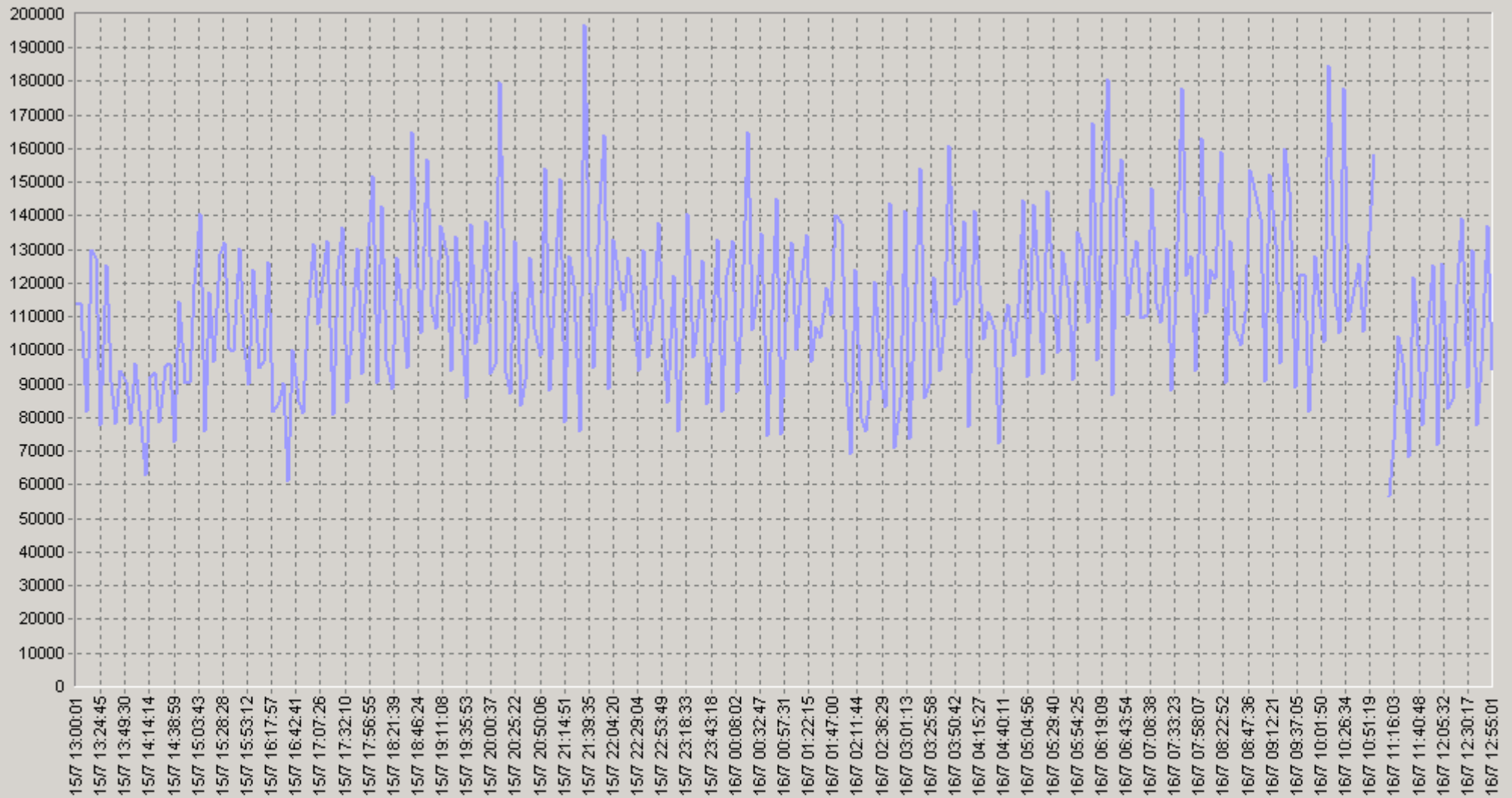
60 IPSLA CALIBRATION.[10.0.3.252->62.61.7.3] SNMP Device Availability (%)



◆ [BaseLine Avg] IPSLA CALIBRATION.[10.0.3.252->62.61.7.3] SNMP Device Availability (%) (60) (SLA-ON-SERVER1)
 ◆ [BaseLine Percnt75 (>)] IPSLA CALIBRATION.[10.0.3.252->62.61.7.3] SNMP Device Availability (%) (60) (SLA-ON-SERVER1)
 ◆ [BaseLine Percnt90 (>)] IPSLA CALIBRATION.[10.0.3.252->62.61.7.3] SNMP Device Availability (%) (60) (SLA-ON-SERVER1)

15.07.2008 13:00 - 16.07.2008 13:00

IPSLA CALIBRATION. [10.0.3.252->62.61.7.3] Delay (usec)



— IPSLA CALIBRATION.[10.0.3.252->62.61.7.3] Delay (usec)(SLA-ON-SERVER1)

15.07.2008 13:00 - 16.07.2008 13:00

20 IPSLA CALIBRATION.[10.0.3.252->62.61.7.3] Delay (usec)

		75<	90<			75<	90<
00:00-00:20	118 099	149 671	157 909	06:00-06:20	128 460	159 650	208 994
00:20-00:40	122 172	146 988	166 107	06:20-06:40	135 887	161 471	189 870
00:40-01:00	107 154	135 789	162 105	06:40-07:00	128 027	142 273	155 837
01:00-01:20	121 537	139 449	162 924	07:00-07:20	119 087	134 771	154 140
01:20-01:40	104 859	120 261	133 009	07:20-07:40	114 662	141 797	147 959
01:40-02:00	127 691	147 921	162 459	07:40-08:00	130 191	143 236	169 190
02:00-02:20	89 945	101 075	120 344	08:00-08:20	128 086	179 667	188 942
02:20-02:40	90 752	100 510	137 301	08:20-08:40	121 081	127 403	175 946
02:40-03:00	103 317	115 036	154 066	08:40-09:00	135 448	149 562	187 781
03:00-03:20	117 740	142 296	167 771	09:00-09:20	118 714	145 373	177 723
03:20-03:40	94 388	115 138	131 500	09:20-09:40	128 444	148 913	165 186
03:40-04:00	133 785	162 127	169 836	09:40-10:00	114 644	145 545	175 979
04:00-04:20	112 747	137 063	162 006	10:00-10:20	125 413	150 491	200 486
04:20-04:40	100 729	118 702	136 924	10:20-10:40	130 729	148 424	197 759
04:40-05:00	114 054	144 118	163 975	10:40-11:00	127 130	150 931	167 659
05:00-05:20	116 239	129 333	153 613	11:00-11:20	76 222	89 904	114 522
05:20-05:40	120 153	143 417	162 730	11:20-11:40	101 076	115 641	122 291
05:40-06:00	121 956	142 957	145 601	11:40-12:00	98 034	114 292	130 322

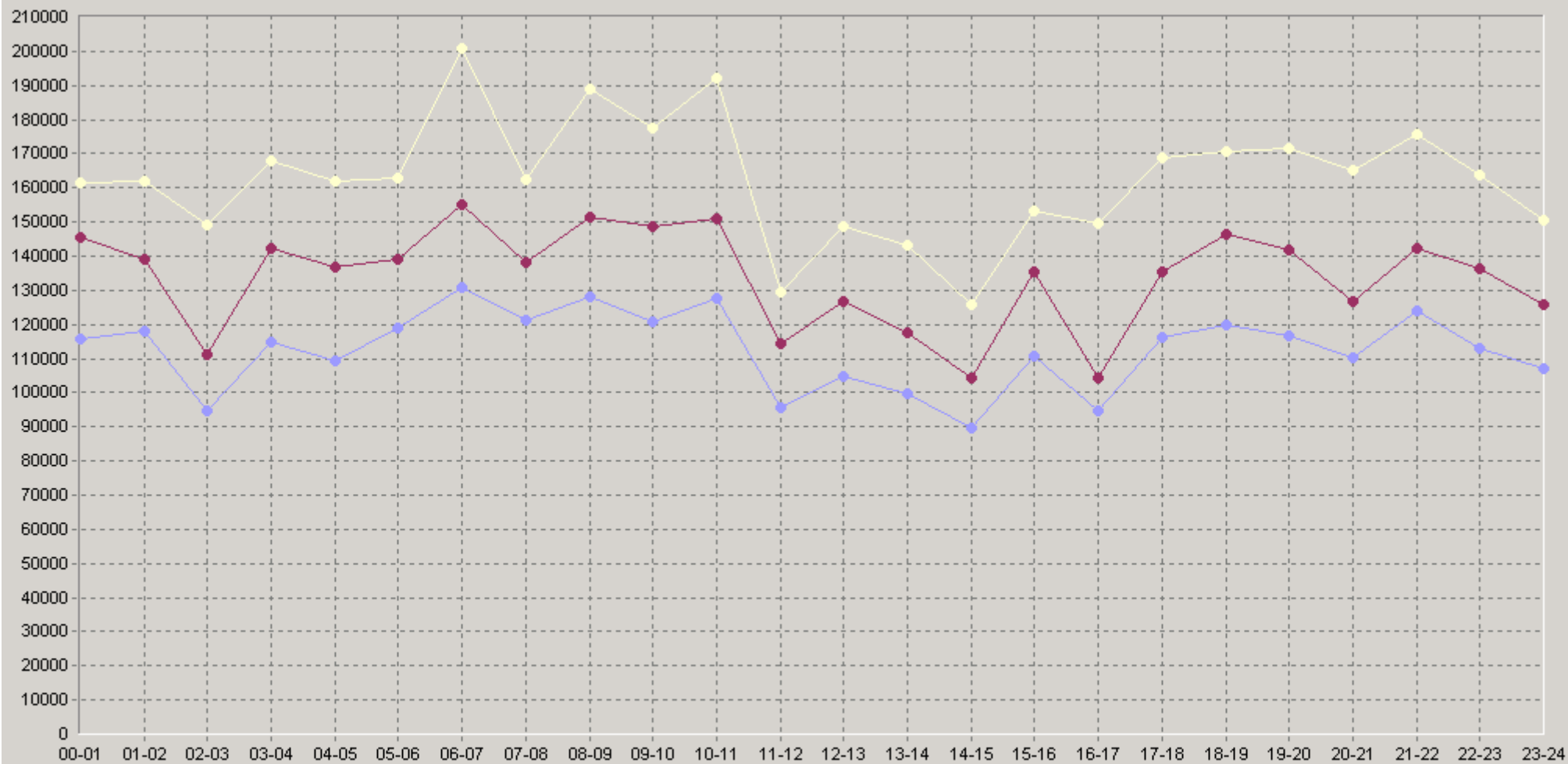
15.07.2008 13:00 - 16.07.2008 13:00

20 IPSLA CALIBRATION.[10.0.3.252->62.61.7.3] Delay (usec)

		75<	90<			75<	90<
12:00-12:20	96 976	107 118	136 915	18:00-18:20	110 293	133 398	158 964
12:20-12:40	116 690	138 044	155 243	18:20-18:40	115 280	136 665	155 089
12:40-13:00	100 353	110 743	124 968	18:40-19:00	134 413	163 993	175 781
13:00-13:20	113 464	141 663	163 674	19:00-19:20	117 201	148 847	167 358
13:20-13:40	99 461	117 831	143 085	19:20-19:40	111 471	131 126	178 290
13:40-14:00	85 754	94 584	113 081	19:40-20:00	121 352	132 112	161 773
14:00-14:20	85 007	93 319	108 614	20:00-20:20	114 809	126 733	168 112
14:20-14:40	87 101	97 070	107 684	20:20-20:40	99 221	124 033	147 245
14:40-15:00	96 431	115 041	142 579	20:40-21:00	117 768	127 933	165 185
15:00-15:20	113 730	135 277	153 401	21:00-21:20	107 953	124 076	142 526
15:20-15:40	111 457	135 525	148 664	21:20-21:40	132 103	145 609	175 464
15:40-16:00	107 550	119 831	139 652	21:40-22:00	130 115	158 154	180 681
16:00-16:20	107 035	120 215	152 455	22:00-22:20	113 732	132 659	170 300
16:20-16:40	82 522	98 211	104 286	22:20-22:40	118 701	136 135	162 072
16:40-17:00	94 094	95 727	113 157	22:40-23:00	106 403	123 725	162 668
17:00-17:20	119 953	153 917	172 902	23:00-23:20	100 248	117 350	136 053
17:20-17:40	106 971	127 753	168 972	23:20-23:40	115 351	139 000	172 862
17:40-18:00	122 079	132 591	151 234	23:40-00:00	105 039	125 174	150 492

15.07.2008 13:00 - 16.07.2008 13:00

60 IPSLA CALIBRATION.[10.0.3.252->62.61.7.3] Delay (usec)



◆ [BaseLine Avg] IPSLA CALIBRATION.[10.0.3.252->62.61.7.3] Delay (usec)(60)(SLA-ON-SERVER1)
 ◆ [BaseLine Percnt75 (<=)] IPSLA CALIBRATION.[10.0.3.252->62.61.7.3] Delay (usec)(60)(SLA-ON-SERVER1)
 ◆ [BaseLine Percnt90 (<=)] IPSLA CALIBRATION.[10.0.3.252->62.61.7.3] Delay (usec)(60)(SLA-ON-SERVER1)

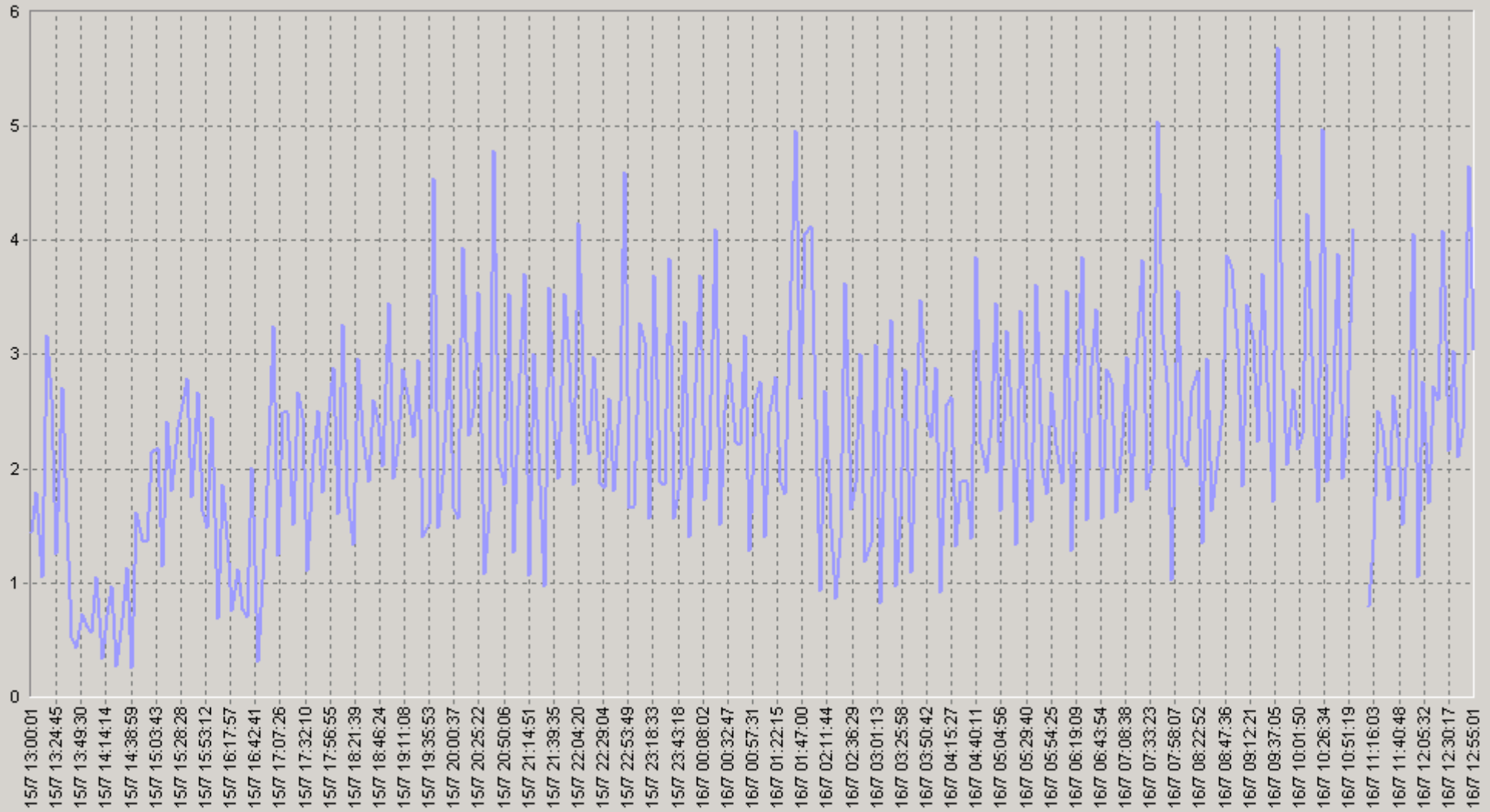


IP SLA

113

15.07.2008 13:00 - 16.07.2008 13:00

IPSLA CALIBRATION.[10.0.3.252->62.61.7.3] Packet Loss (%)



IPSLA CALIBRATION.[10.0.3.252->62.61.7.3] Packet Loss (%) (SLA-ON-SERVER1)

15.07.2008 13:00 - 16.07.2008 13:00

20. IPSLA CALIBRATION. [10.0.3.252->62.61.7.3] Packet Loss (%)

		75<	90<			75<	90<
00:00-00:20	2,68	3,6	4,1	06:00-06:20	2,21	3,2	4,1
00:20-00:40	2,68	3,1	4,9	06:20-06:40	2,79	3,9	4,3
00:40-01:00	2,13	2,7	3,4	06:40-07:00	2,55	3,1	4,1
01:00-01:20	2,45	3,2	3,5	07:00-07:20	2,1	2,7	3,2
01:20-01:40	2,7	3,3	4,4	07:20-07:40	2,82	3,5	4,8
01:40-02:00	3,67	4,6	5	07:40-08:00	2,98	3,9	5,3
02:00-02:20	1,62	2,2	2,8	08:00-08:20	2,47	3,5	4,9
02:20-02:40	1,95	2	3	08:20-08:40	2,2	3,3	3,7
02:40-03:00	1,95	2,8	3,5	08:40-09:00	3,22	4,1	4,5
03:00-03:20	2,29	2,9	4,1	09:00-09:20	2,63	3,2	4,7
03:20-03:40	1,58	2,4	3,3	09:20-09:40	2,72	3,5	4,5
03:40-04:00	2,85	3,3	3,8	09:40-10:00	3,35	3,5	5,2
04:00-04:20	2,04	2,9	3,9	10:00-10:20	2,72	3,6	3,9
04:20-04:40	1,75	2,4	2,8	10:20-10:40	2,93	3,9	5
04:40-05:00	2,87	3,2	3,6	10:40-11:00	3,04	4	4,7
05:00-05:20	2,32	3	3,4	11:00-11:20	1,53	1,9	3
05:20-05:40	2,32	3,4	3,6	11:20-11:40	2,33	3	4,1
05:40-06:00	2,56	2,6	3,55	11:40-12:00	2,5	2,9	4,4

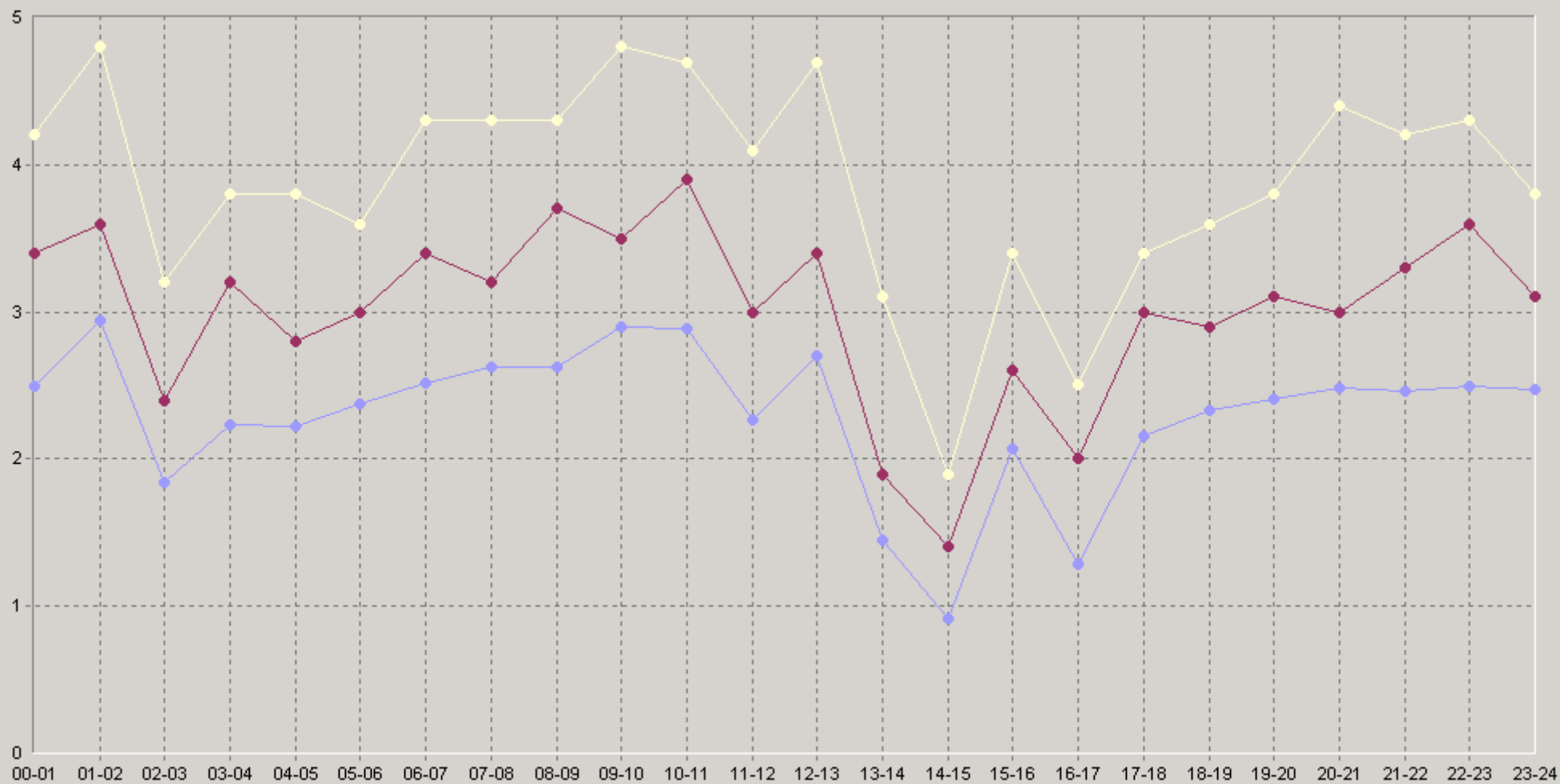
15.07.2008 13:00 - 16.07.2008 13:00

20. IPSLA CALIBRATION.[10.0.3.252->62.61.7.3] Packet Loss (%)

		75<	90<			75<	90<
12:00-12:20	2,18	2,6	5,5	18:00-18:20	2,11	2,8	3,2
12:20-12:40	2,92	3,3	4,7	18:20-18:40	2,34	3	3,7
12:40-13:00	3	3,7	4,2	18:40-19:00	2,54	2,8	3,6
13:00-13:20	1,97	2,8	3,4	19:00-19:20	2,43	3,1	3,8
13:20-13:40	1,79	2,4	3,1	19:20-19:40	2,47	3,1	3,7
13:40-14:00	0,62	0,9	1,3	19:40-20:00	2,33	2,9	3,5
14:00-14:20	0,71	1,1	1,4	20:00-20:20	2,33	2,8	4,4
14:20-14:40	0,67	1	1,2	20:20-20:40	2,74	3,4	5
14:40-15:00	1,39	2,1	2,8	20:40-21:00	2,38	2,9	3,6
15:00-15:20	1,94	2,2	3,1	21:00-21:20	2,22	3,25	3,6
15:20-15:40	2,29	2,8	3,4	21:20-21:40	2,49	3,3	3,9
15:40-16:00	2	2,5	3,2	21:40-22:00	2,67	3,4	4,2
16:00-16:20	1,38	2,1	2,4	22:00-22:20	2,63	3,3	3,7
16:20-16:40	1,1	1,5	2,2	22:20-22:40	2,43	3,4	4,3
16:40-17:00	1,37	2,1	2,5	22:40-23:00	2,44	4,1	4,5
17:00-17:20	2,15	3,1	3,3	23:00-23:20	2,57	2,7	3,8
17:20-17:40	1,93	2,5	3,4	23:20-23:40	2,77	3,5	5,1
17:40-18:00	2,39	3	3,3	23:40-00:00	2,08	2,8	3,1

15.07.2008 13:00 - 16.07.2008 13:00

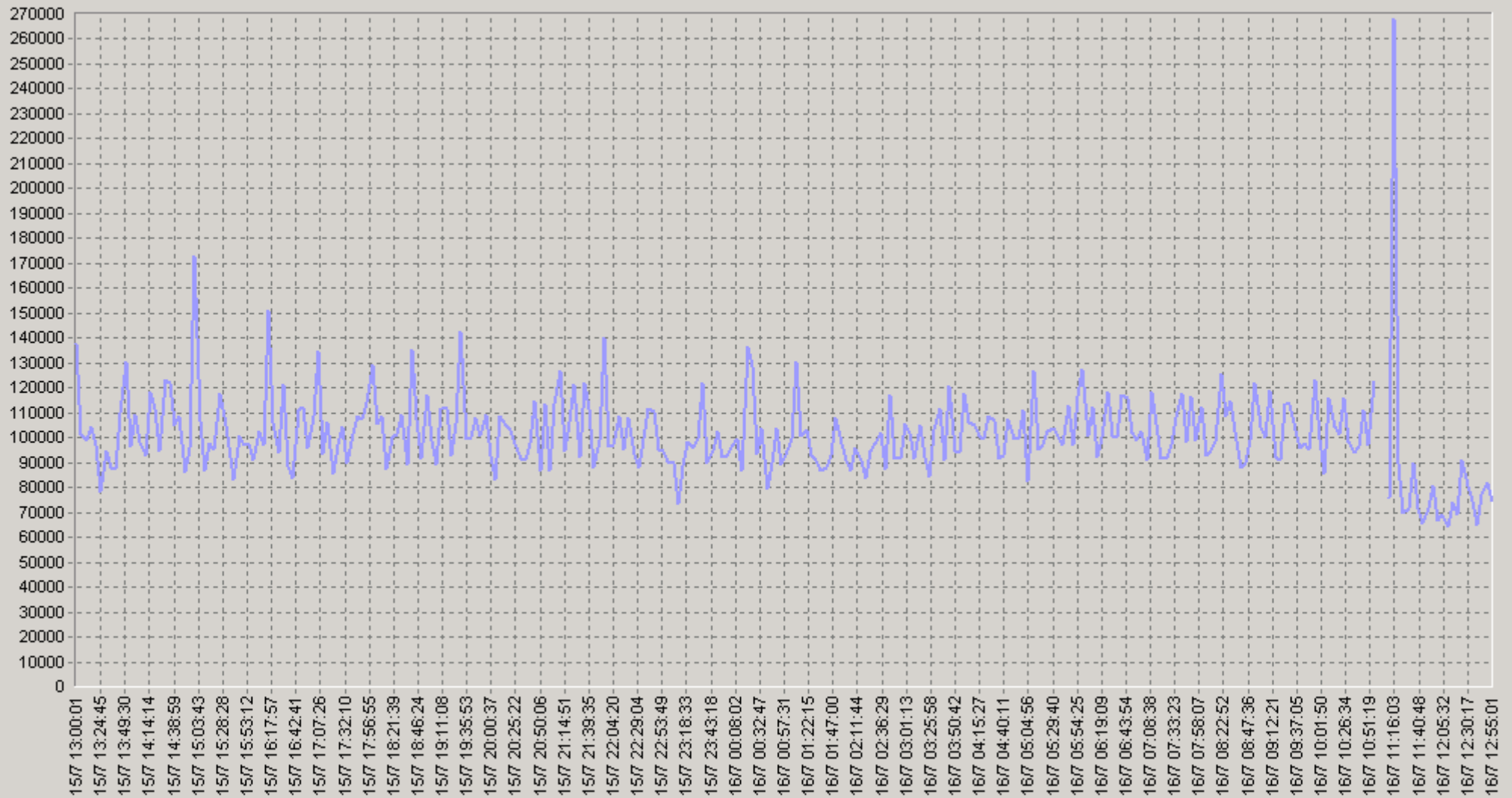
60. IPSLA CALIBRATION.[10.0.3.252->62.61.7.3] Packet Loss (%)



◆ [BaseLine Avg] IPSLA CALIBRATION.[10.0.3.252->62.61.7.3] Packet Loss (%) (60)(SLA-ON-SERVER1)
 ◆ [BaseLine Percnt75 (<=)] IPSLA CALIBRATION.[10.0.3.252->62.61.7.3] Packet Loss (%) (60)(SLA-ON-SERVER1)
 ◆ [BaseLine Percnt90 (<=)] IPSLA CALIBRATION.[10.0.3.252->62.61.7.3] Packet Loss (%) (60)(SLA-ON-SERVER1)

15.07.2008 13:00 - 16.07.2008 13:00

IPSLA CALIBRATION.[10.0.3.252->62.61.7.3] Jitter (usec)



— IPSLA CALIBRATION.[10.0.3.252->62.61.7.3] Jitter (usec)(SLA-ON-SERVER1)

15.07.2008 13:00 - 16.07.2008 13:00

20 IPSLA CALIBRATION.[10.0.3.252->62.61.7.3] Jitter (usec)

		75<	90<			75<	90<
00:00-00:20	97 616	104 661	112 569	06:00-06:20	106 422	114 762	131 082
00:20-00:40	111 621	123 333	148 049	06:20-06:40	106 207	115 296	118 957
00:40-01:00	91 685	102 625	115 604	06:40-07:00	107 974	114 132	122 325
01:00-01:20	107 595	116 700	126 000	07:00-07:20	103 677	115 132	124 417
01:20-01:40	90 637	100 209	107 173	07:20-07:40	99 414	112 976	118 306
01:40-02:00	99 670	104 273	114 183	07:40-08:00	105 990	112 553	130 435
02:00-02:20	88 639	94 790	111 085	08:00-08:20	100 298	109 362	120 717
02:20-02:40	94 786	99 000	115 173	08:20-08:40	112 113	119 706	131 143
02:40-03:00	98 471	106 089	125 302	08:40-09:00	102 093	117 017	128 000
03:00-03:20	101 360	106 872	120 333	09:00-09:20	99 577	107 055	116 286
03:20-03:40	96 630	111 846	128 045	09:20-09:40	109 293	122 407	131 405
03:40-04:00	105 332	111 170	127 906	09:40-10:00	102 730	115 526	124 412
04:00-04:20	102 938	107 630	118 667	10:00-10:20	100 236	115 491	126 000
04:20-04:40	101 693	113 774	121 400	10:20-10:40	102 610	113 938	128 822
04:40-05:00	104 304	114 518	128 962	10:40-11:00	105 847	116 734	123 929
05:00-05:20	99 515	108 176	120 689	11:00-11:20	177 456	81 764	306 379
05:20-05:40	101 919	105 571	109 977	11:20-11:40	76 717	86 353	94 850
05:40-06:00	107 038	115 500	123 909	11:40-12:00	70 423	76 926	86 273

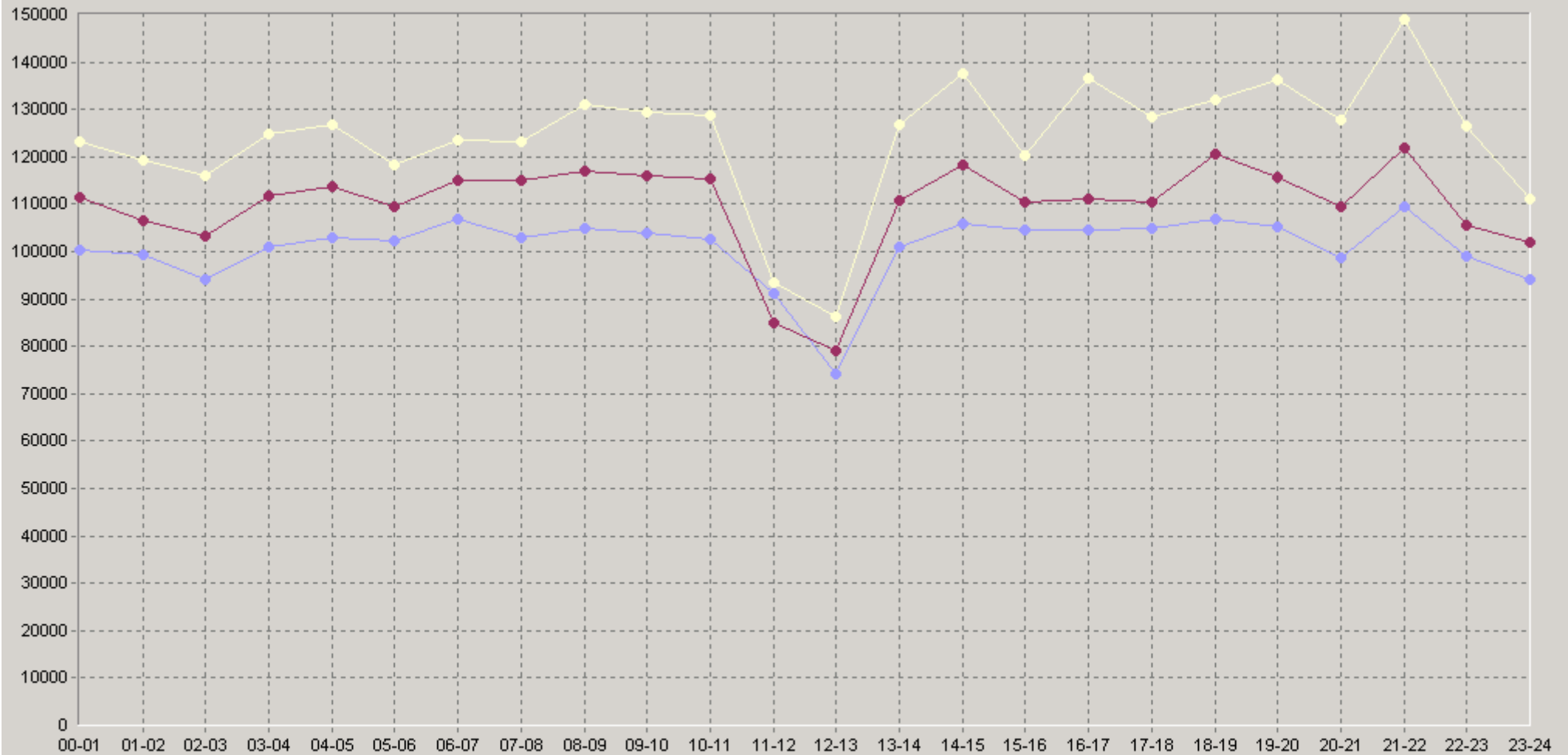
15.07.2008 13:00 - 16.07.2008 13:00

20 IPSLA CALIBRATION.[10.0.3.252->62.61.7.3] Jitter (usec)

		75<	90<			75<	90<
12:00-12:20	69 556	74 373	80 811	18:00-18:20	107 061	124 900	132 021
12:20-12:40	77 788	84 174	97 103	18:20-18:40	101 277	113 020	124 979
12:40-13:00	75 222	77 731	85 926	18:40-19:00	112 292	120 600	148 406
13:00-13:20	107 926	111 220	130 643	19:00-19:20	101 181	111 912	120 022
13:20-13:40	87 594	95 375	103 327	19:20-19:40	108 560	119 808	151 514
13:40-14:00	106 465	118 750	152 343	19:40-20:00	105 826	111 321	118 160
14:00-14:20	108 088	123 200	143 475	20:00-20:20	102 997	111 129	128 750
14:20-14:40	113 192	128 514	137 563	20:20-20:40	89 774	100 063	106 345
14:40-15:00	96 123	99 824	115 034	20:40-21:00	103 753	118 838	129 068
15:00-15:20	116 339	110 500	120 160	21:00-21:20	104 740	102 960	148 872
15:20-15:40	100 891	116 119	131 955	21:20-21:40	111 086	119 521	122 582
15:40-16:00	96 220	101 185	108 804	21:40-22:00	111 996	123 857	141 125
16:00-16:20	112 684	118 057	139 351	22:00-22:20	96 776	103 667	114 926
16:20-16:40	99 704	102 957	117 058	22:20-22:40	96 981	101 841	113 877
16:40-17:00	101 010	104 156	127 270	22:40-23:00	102 998	113 727	134 182
17:00-17:20	111 153	110 273	150 048	23:00-23:20	85 003	92 937	99 246
17:20-17:40	94 484	102 321	110 378	23:20-23:40	103 877	108 154	123 837
17:40-18:00	109 489	115 946	124 622	23:40-00:00	93 649	103 235	110 634

15.07.2008 13:00 - 16.07.2008 13:00

6Q IPSLA CALIBRATION.[10.0.3.252->62.61.7.3] Jitter (usec)



◆ [BaseLine Avg] IPSLA CALIBRATION.[10.0.3.252->62.61.7.3] Jitter (usec)(60)(SLA-ON-SERVER1)
 ◆ [BaseLine Percnt75 (<=)] IPSLA CALIBRATION.[10.0.3.252->62.61.7.3] Jitter (usec)(60)(SLA-ON-SERVER1)
 ◆ [BaseLine Percnt90 (<=)] IPSLA CALIBRATION.[10.0.3.252->62.61.7.3] Jitter (usec)(60)(SLA-ON-SERVER1)

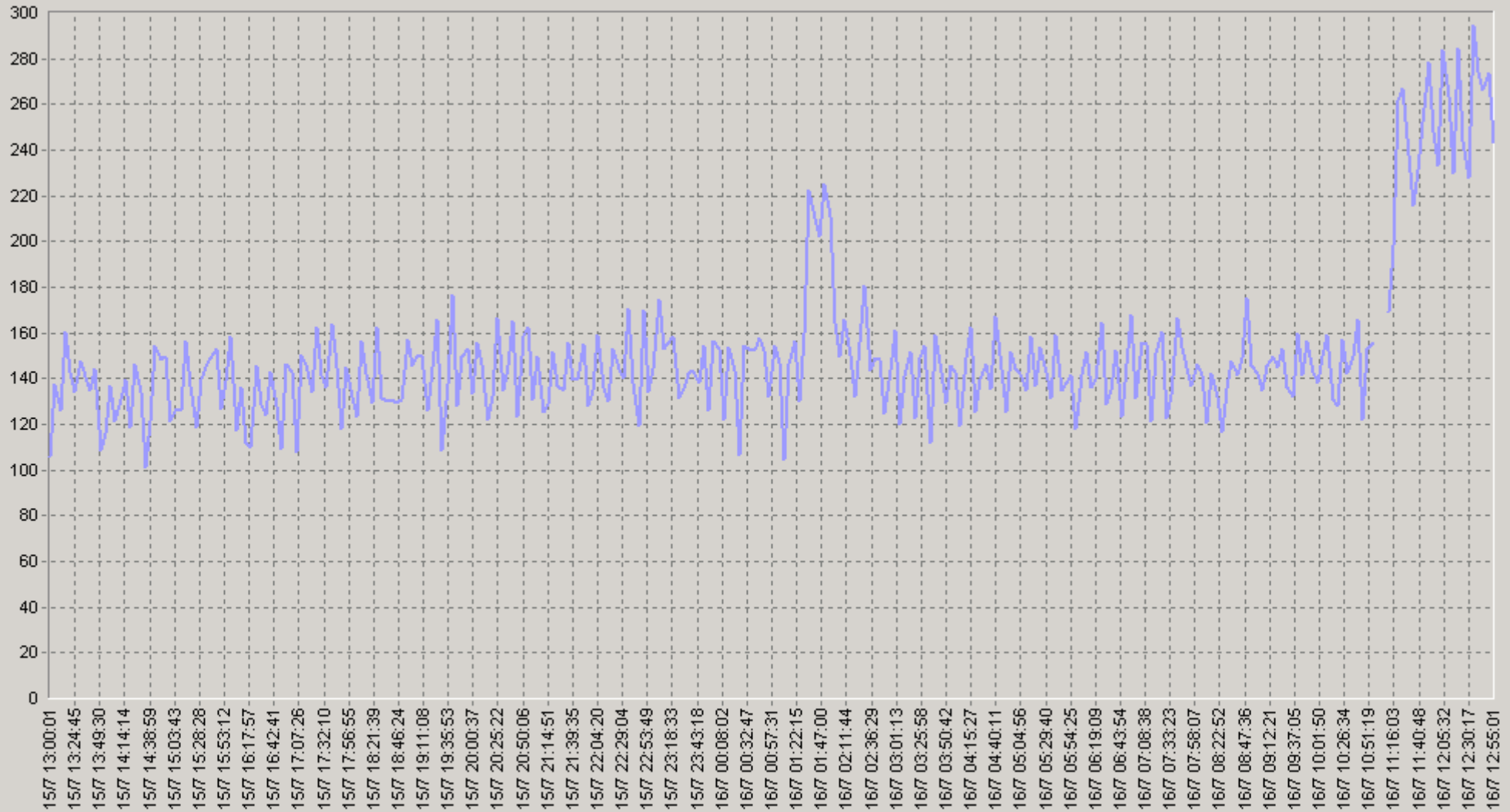


IP SLA

113

15.07.2008 13:00 - 16.07.2008 13:00

IPSLA CALIBRATION.[10.0.3.252->62.61.7.3] The Number of Round Trip Operations



IPSLA CALIBRATION.[10.0.3.252->62.61.7.3] The Number of Round Trip Operations(SLA-ON-SERVER1)

15.07.2008 13:00 - 16.07.2008 13:00

20. IPSLA CALIBRATION. [10.0.3.252->62.61.7.3] The Number of Round Trip Operations

		75>	90>		75>	90>
00:00-00:20	146	129	119	06:00-06:20	136	109
00:20-00:40	142	116	100	06:20-06:40	144	124
00:40-01:00	145	135	119	06:40-07:00	146	131
01:00-01:20	143	126	105	07:00-07:20	141	109
01:20-01:40	171	142	115	07:20-07:40	143	116
01:40-02:00	209	198	178	07:40-08:00	148	115
02:00-02:20	152	137	133	08:00-08:20	138	103
02:20-02:40	153	136	127	08:20-08:40	131	117
02:40-03:00	143	133	121	08:40-09:00	155	135
03:00-03:20	139	124	109	09:00-09:20	142	124
03:20-03:40	139	124	100	09:20-09:40	141	116
03:40-04:00	143	134	121	09:40-10:00	150	120
04:00-04:20	142	133	110	10:00-10:20	143	111
04:20-04:40	139	121	114	10:20-10:40	148	125
04:40-05:00	149	130	120	10:40-11:00	149	107
05:00-05:20	143	132	124	11:00-11:20	204	54
05:20-05:40	142	132	124	11:20-11:40	245	197
05:40-06:00	144	133	124	11:40-12:00	252	218

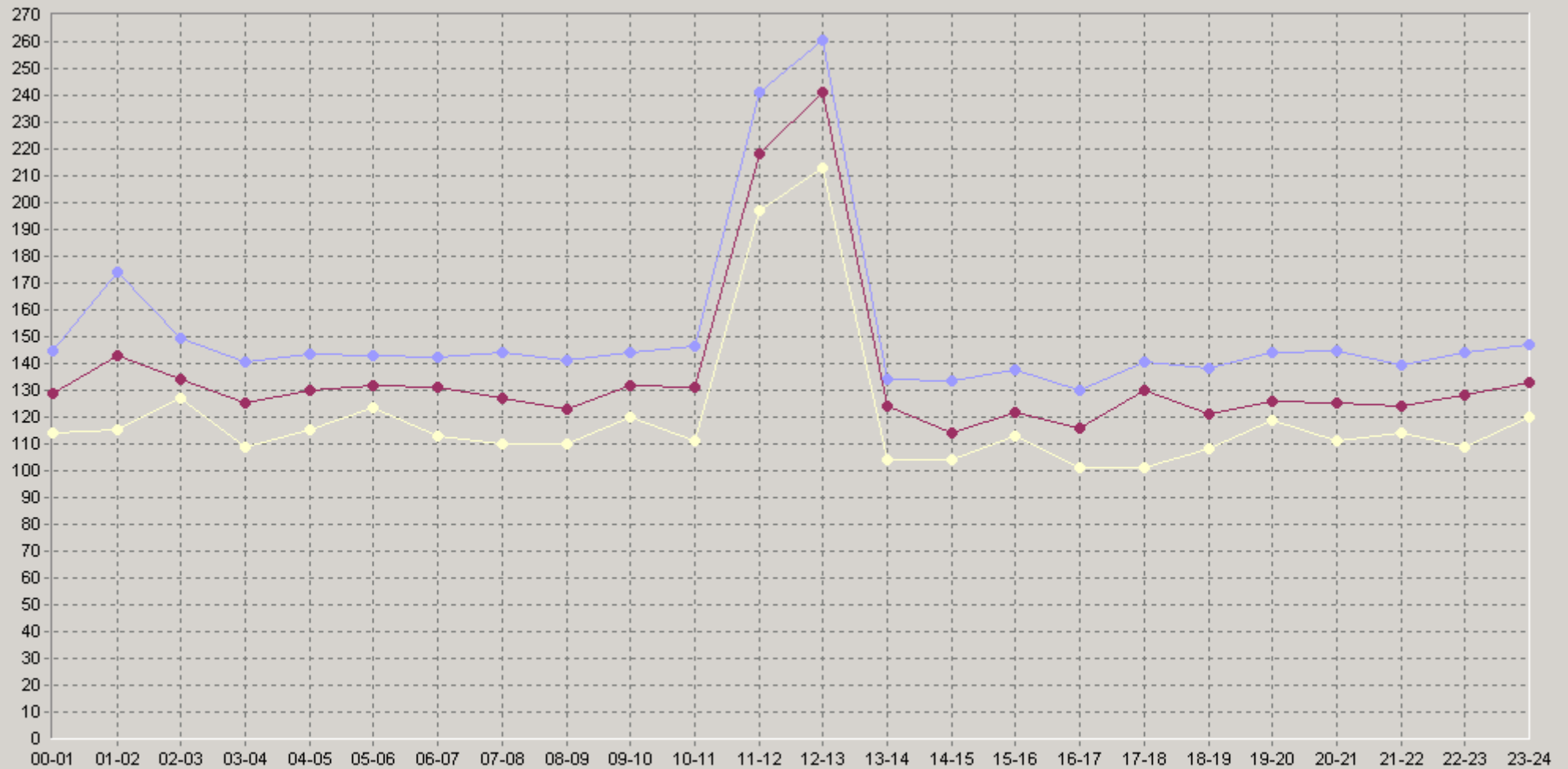
15.07.2008 13:00 - 16.07.2008 13:00

20. IPSLA CALIBRATION. [10.0.3.252->62.61.7.3] The Number of Round Trip Operations

		75>	90>			75>	90>
12:00-12:20	255	233	213	18:00-18:20	135	120	112
12:20-12:40	267	251	186	18:20-18:40	142	121	108
12:40-13:00	259	238	227	18:40-19:00	137	128	107
13:00-13:20	137	131	104	19:00-19:20	142	125	121
13:20-13:40	138	124	107	19:20-19:40	145	123	112
13:40-14:00	128	124	96	19:40-20:00	145	135	125
14:00-14:20	130	114	112	20:00-20:20	136	120	109
14:20-14:40	123	104	94	20:20-20:40	155	141	135
14:40-15:00	147	133	121	20:40-21:00	144	122	114
15:00-15:20	134	124	108	21:00-21:20	135	123	112
15:20-15:40	135	118	113	21:20-21:40	146	134	131
15:40-16:00	143	130	121	21:40-22:00	137	122	114
16:00-16:20	127	110	101	22:00-22:20	142	127	109
16:20-16:40	130	118	98	22:20-22:40	154	141	129
16:40-17:00	134	117	112	22:40-23:00	137	119	105
17:00-17:20	133	128	99	23:00-23:20	160	139	132
17:20-17:40	146	132	107	23:20-23:40	143	130	123
17:40-18:00	143	130	107	23:40-00:00	140	130	114

15.07.2008 13:00 - 16.07.2008 13:00

60. IPSLA CALIBRATION.[10.0.3.252->62.61.7.3] The Number of Round Trip Operations



◆ [BaseLine Avg] IPSLA CALIBRATION.[10.0.3.252->62.61.7.3] The Number of Round Trip Operations(60)(SLA-ON-SERVER1)
 ◆ [BaseLine Percnt75 (>)] IPSLA CALIBRATION.[10.0.3.252->62.61.7.3] The Number of Round Trip Operations(60)(SLA-ON-SERVER1)
 ◆ [BaseLine Percnt90 (>)] IPSLA CALIBRATION.[10.0.3.252->62.61.7.3] The Number of Round Trip Operations(60)(SLA-ON-SERVER1)